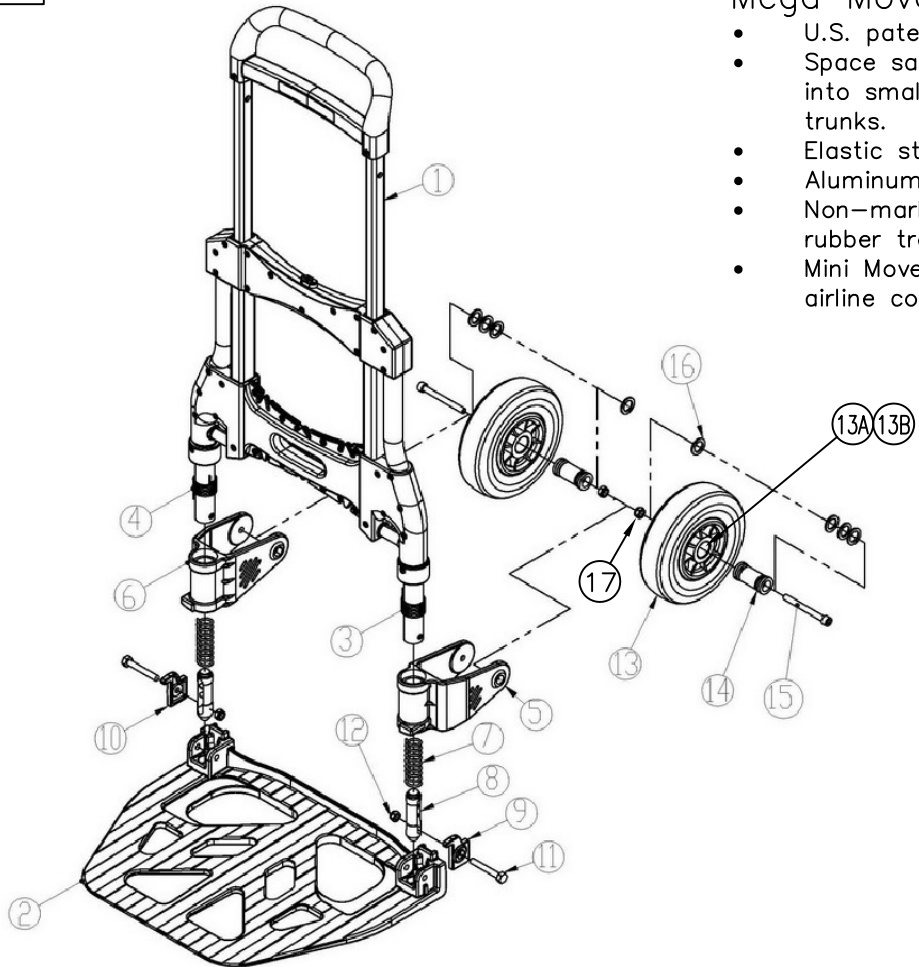


Mega Mover Folding Truck

- U.S. patent no. D411,679.
- Space saving folding design. Fits into small storage spaces or car trunks.
- Elastic straps for securing load.
- Aluminum or steel construction.
- Non-marking, shock absorbing, rubber tread tires.
- Mini Mover fits into overhead airline compartments.



Specs

Overall Width: 26.5"
Overall Height: 47"
Overall Depth: 25.5"
Capacity: 550 lbs
Folded: 34" x 23.5" x 4.75"

REPLACEMENT PARTS LIST

ITEM	P/N	DESCRIPTION	QTY
1		FRAME	1
2		NOSEPLATE	1
3		BASE ARM: LEFT	1
4		BASE ARM: RIGHT	1
5		BRACKET: LEFT	1
6		BRACKET: RIGHT	1
7	170298	SPRING	2
8		PIN	2
9	170294	BLOCK: LEFT	1
10		BLOCK: RIGHT	1
11		SCREW: HEX (M10 X P1.5 X 70L)	2
12	170288	NUT: HEX (M10 x P1.5)	4
13	150700	WHEEL: PNEUMATIC	2
13A	170295	BEARING: WHEEL	2
13B	170296	CAP: BEARING WHEEL	2
14	170297	BUSHING: AXLE	2
** 15	170312	AXLE	2
16		WASHER	8
** 17		NUT	2

*ITEMS 9 & 10 SOLD TOGETHER AS ITEM 170294

**ITEM 17 NUT INCLUDED WITH ITEM 15 AXLE

Wheel Size: 8" rubber
Noseplate Size: 23.5" x 18"
Handle Height: 34" - 47"
Weight: 28.5 lbs
Boxed Size: 35.5" x 24" x 5.5"

THIS DRAWING IN ALL PARTICULARS IS WESCO INDUSTRIAL PRODUCTS INC. PROPERTY. ALL RIGHTS OF DESIGN, INVENTION OR USE OF ARE RESERVED.

APP	WESCO INDUSTRIAL PRODUCTS INC.	
	NORTH WALES PENNA. 19454	
REV.	EON & DATE	REVISIONS
		PART NAME
		Folding Hand Trucks
		TOLERANCE UNLESS OTHERWISE SPECIFIED
		FRACTION 3 PLACE DECIMAL 2 PLACE DECIMAL
		± 1/64 ± .005 ± .01
		ANGULAR ± 1-1/2° SHEET 1 OF 1
		BREAK ALL SHARP EDGES AND REMOVE ALL BURRS
		DRAWN:
		CHECKED:
		APP. ENGR.
		SCALE:
		B- 220650
		REV