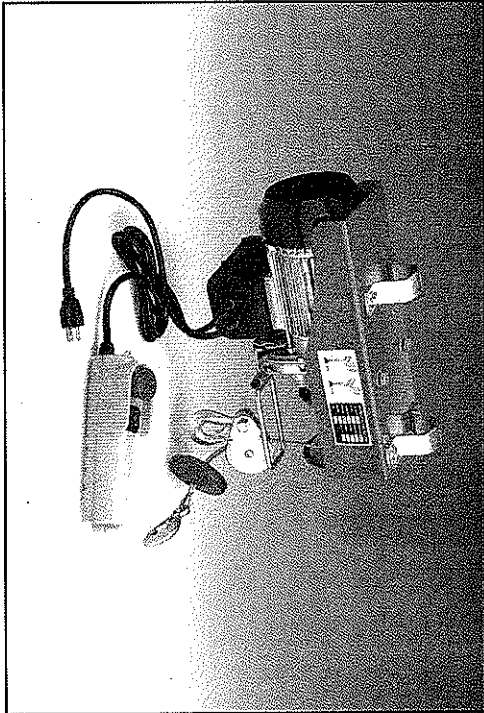


# Electric Hoist

Assembly & Operating Instructions



HGS-B200	HGS-B250
HGS-B400	HGS-B500
HGS-B600	

**WARNING!** To reduce the risk of injury, user must read and understand instruction manual.

Technical data	HGS-B200	HGS-B250	HGS-B400	HGS-B500	HGS-B600
Method of use	Single cable	Double cable	Single cable	Double cable	Single cable
Loading capacity	220Lb	440Lb	275Lb	550Lb	1100Lb
Lifting speed	33'	16.5'	33'	16.5'	33'
Lifting height	38'	19'	38'	19'	38'
Cable diameter	1/8"	1/8"	9/64"	5/32"	11/64"
Work rate	S3-20% 10min	S3-20% 10min	S3-20% 10min	S3-20% 10min	S3-20% 10min
Voltage	100/110V-50/60Hz	100/110V-50/60Hz	100/110V-50/60Hz	100/110V-50/60Hz	100/110V-50/60Hz
Power	510W	540W	980W	1020W	1200W

**INCLUDED ACCESSORIES**

1. Mounting clamps for attaching hoist to fixed overhead or rotating support.
2. Remote Switch with water sealed power switch, for safe operation.
3. 38 steel wire cable with sheaved pulley lift hook and weighed lift hook.
4. Stabilizing weight on primary lift hook.
5. Built-in cable guide.

**PRODUCT FEATURES**

1. Convenient hoisting power for lifting tools, equipment and other heavy items.
2. Powerful 440 Lb lifting power using pulley-enabled double cable system.
3. 110 Volt powered for convenient use with grounded household outlets.
4. Separate hanging control handle offers convenient control.

**SAVE THIS MANUAL**

You will need this manual for the safety warnings and cautions, assembly instructions, operating procedures, maintenance procedures, trouble shooting, parts list and diagram. Keep your invoice with this manual. Write the invoice number on the inside of the front cover. Keep both this manual and your invoice in a safe, dry place for future reference.

**NOTICE**

The Warnings, Cautions, and Instructions discussed in this instruction manual cannot cover all possible conditions and situations that may occur. It must be understood by the operator that common sense and caution are factors which cannot be built into this product, but must be supplied by the operator.

## SAFETY WARNING & CAUTIONS

*WARNING: When using powered equipment, basic safety precautions should always be followed to reduce the risk of personal injury and hazards.*

### **READ ALL INSTRUCTIONS BEFORE USING THIS TOOL!**

1. **KEEP WORK AREA CLEAN.** Cluttered areas invite injuries.
2. **OBSERVE WORK AREA CONDITIONS.** Do not use tools in damp, wet, or poorly lit locations. Don't expose to rain. Keep work area well lit. Do not use electrically powered equipment in the presence of flammable gases or liquids.
3. **KEEP CHILDREN AWAY.** Children must never be allowed in the work area. Do not let them handle machines, tools, or equipment.
4. **STORE IDLE EQUIPMENT.** When not in use, tools must be locked up in a dry location to inhibit rust. Always lock up tools and keep out of reach of children.
5. **DO NOT FORCE THE TOOL.** It will do the job better and more safely at the rate for which it was intended. Do not use inappropriate attachments in an attempt to exceed the tool's capacities.
6. **USE THE RIGHT TOOL FOR THE JOB.** Do not use a tool for a purpose for which it was not intended.
7. **DRESS PROPERLY.** Do not wear loose clothing or jewelry, as they can be caught in moving parts. Non-skid footwear is recommended. Wear restrictive hair covering to contain long hair. Always wear appropriate work clothing.
8. **USE EYE, EAR AND BREATHING PROTECTION.** Always wear ANSI approved impact safety goggles if you are producing metal filings or wood chips. Wear an ANSI approved dust mask or respirator when working around metal, wood, and chemical dusts and mists. Use ANSI approved ear protection when working in a loud or noisy environment.
9. **DO NOT ABUSE THE POWER CORD.** Protect the power cord from damage, either from impacts, pulling or corrosive materials. Do not yank machine's cord to disconnect it from the receptacle.
10. **DO NOT OVERRRACH.** Keep proper footing and balance at all times. Do not reach over or across running machines.
11. **MAINTAIN TOOLS WITH CARE.** Keep tools sharp and clean for better and safer performance. Follow instructions for lubricating and changing accessories. Inspect power cord periodically and, if damaged, have it repaired by an authorized technician. Inspect all moving parts and mounting bolts prior to use. Control handle and power switch must be kept clean, dry, and free from oil and grease at all times.

12. **REMOVE ADJUSTING KEYS AND WRENCHES.** Be sure that keys and adjusting wrenches are removed from the tool or machine work surface before operation.

13. **AVOID UNINTENTIONAL STARTING.** Be sure that you are prepared to begin work before turning the start switch on.

14. **STAY ALERT.** Watch what you are doing. Do not operate this machine when you are tired.

15. **DO NOT OPERATE THIS MACHINE WHILE UNDER THE INFLUENCE OF ALCOHOL, DRUGS, OR PRESCRIPTION MEDICINES.**

16. **CHECK FOR DAMAGED PARTS.** Before using any tool, any part that appears damaged should be carefully checked to determine that it will operate properly and perform its intended function. Check for alignment and binding of moving parts, any broken parts or mounting fixtures, and any other condition that may affect proper operation. Any part that is damaged should be properly repaired or replaced by a qualified technician.

### SPECIAL WARNINGS WHEN USING THIS ELECTRIC HOIST

*Using this powerful tool may create special hazards.*

*Take particular care to safeguard yourself and those around you.*

#### **The Cable.**

Be sure the cable is in good condition, and is attached properly.

Do not use the winch if the cable is frayed, kinked, or wrapped improperly on the reel. Do not replace the cable with a cable of lesser strength.

#### **Power Supply.**

Be sure the power cord and control handle are in good condition. Avoid use in wet conditions, or exposing the electrical components of this hoist to moisture.

Route the power cord so that it is out of the way of other tools and equipment. Take care to prevent damage to the power cord, or control handle cord. If the cord becomes damaged, repair or replace it before using the hoist.

#### **Stand Back.**

Stay out of the direct line that the cable is pulling. If it slips or breaks, it will "whiplash" along this line. Never stand underneath a weight being lifted.

Always wear ANSI approved eye protection when working around tools and equipment.

Do not hold the cable while using the hoist as your hand can become caught.

Keep hands, clothing, hair and jewelry clear of the hoist while in use.

Use a spotter to assist you in assuring that it is safe to operate the hoist.

#### **Power Limits.**

Do not attempt to exceed the pulling limits of this hoist.

Assure that the mount to which the hoist is attached will hold the weight you will apply using this hoist.

## MOUNTING YOUR WINCH

Your Hoist is delivered completely assembled. You are required only to mount it for use.

Attach your hoist to an overhead pipe using the included brackets.

1. Find the 2 Brackets/Fixing Rings (#4) and the Bolts/Hexagon Screws (#2#3)
2. Place the Fixing Rings over a suitable pipe, in the position you wish to mount the hoist.
3. Have an assistant hold the hoist in place while you install the Bolts through the Fixing Rings into the threaded holes in the Fixing Rack (#5) of the hoist.
4. With the hoist in the correct position, firmly tighten the bolts.

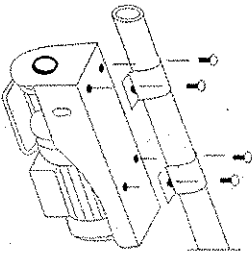


Figure 1. Mounting the Hoist.

Your hoist may be mounted on a fixed overhead pipe, or attached to a pole on a rotating pillar.

Your Hoist may also be used to pull objects horizontally, such as a boat, or vehicle on a trailer.

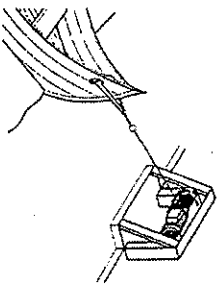
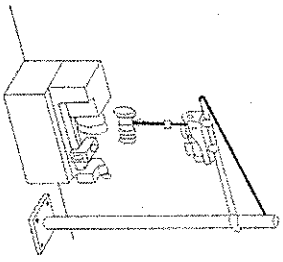


Figure 2. Optional Pole Mount.

Figure 3. Using the Hoist to Pull.

## USING YOUR HOIST

1. The cable spool will not turn freely. To pull out or wind up cable, you must operate the power switch.
2. To operate the power switch, take the control handle in your hand. Press the upper part of the rocker switch to reel in the cable. Press the lower part of the rocker cable to reel out cable.
3. Check to be sure it is safe to lift or pull the item.
4. To pull out the cable, grasp the lift hook, and pull it away from the hoist while pressing the lower part of the power switch. Always leave at least three turns of cable on the spool to prevent pulling the cable out of the winch.
5. Attach the cable firmly to the item using the lift hook or pulley lift hook. Never wrap the cable around the object and hook onto the cable itself. This can cause damage to the object being pulled, and kink or fray the cable.
6. Stand clear, and when it is safe to do so, use the power switch in the control handle to retract the cable, and hoist the item as desired.

## USING YOUR HOIST

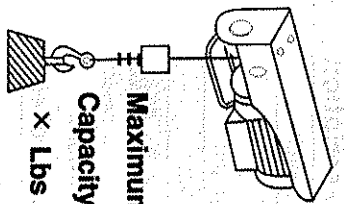


Figure 4. You can lift loads of up to  $1 \times$  Capacity using the Lifting Hook.

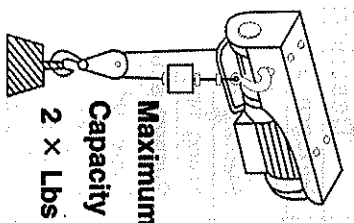


Figure 5. You can lift loads of up to  $2 \times$  Capacity using the Pulley Lift Hook.

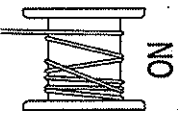


Figure 6. Be sure the cable is wound properly on the reel.

1. Be sure that the cable is properly wound around the spool.
2. Leave at least 3 turns of the cable around the reel, to prevent the cable from coming unattached to the reel.
3. If you are unable to lift a load, do not continue to operate the power switch. This can result in damage to the motor.

## MAINTENANCE

1. Lubricate the cable occasionally with a light oil. Check that it is in good condition.
2. Check to be sure the hoist is properly attached to its mounting pole. Make sure the bolts are tight.
3. Periodically check the condition of the electrical cords, plugs and controls.

## PLEASE READ THE FOLLOWING CAREFULLY

THE MANUFACTURER AND/OR DISTRIBUTOR HAS PROVIDED THE PARTS DIAGRAM IN THIS MANUAL AS A REFERENCE TOOL ONLY. NEITHER THE MANUFACTURER NOR DISTRIBUTOR MAKES ANY REPRESENTATION OR WARRANTY OF ANY KIND TO THE BUYER THAT HE OR SHE IS QUALIFIED TO MAKE ANY REPAIRS TO THE PRODUCT OR THAT HE OR SHE IS QUALIFIED TO REPLACE ANY PARTS OF THE PRODUCT. IN FACT, THE MANUFACTURER AND/OR DISTRIBUTOR EXPRESSLY STATES THAT ALL REPAIRS AND PARTS REPLACEMENTS SHOULD BE UNDERTAKEN BY CERTIFIED AND LICENSED TECHNICIANS AND NOT BY THE BUYER. THE BUYER ASSUMES ALL RISK AND LIABILITY ARISING OUT OF HIS OR HER REPAIRS TO THE ORIGINAL PRODUCT OR REPLACEMENT PARTS THERETO, OR ARISING OUT OF HIS OR HER INSTALLATION OF REPLACEMENT PARTS THERETO.

No.	Description	No.	Description
1	Hexagon bolt	35	Safety switch
2	Spring washer	36	Breaker contactor
3	Flat washer	37	Locating pin
4	Fixing ring	38	Spring tab
5	Support structure	39	Cable
6	Rope roll shaft	40	Socket
7	Flat key	41	Holding fixture
8	Flat key	42	Arm switch lower cover
9	Elastic collar	43	Capactor
10	Bearing	44	Arm switch upper cover
11	Hexagon fillister head screw	45	Rise and fall switch
12	Gear case	46	Three-prong plug
13	Spring washer	47	Locknut
14	Flat washer	48	Hook washer
15	Gearwheel	49	Hexagon bolt
16	Cushion board	50	Hexagon bolt
17	Front cover	51	Wheel axle
18	Bearing	52	Splint
19	Stator	53	Pulley
20	Stator shell	54	Hook fixed nut
21	Rotor	55	Gearwheel
22	Tripping spring	56	Flat key
23	Brake component	57	Gear shaft
24	Aft closure	58	Bearing
25	Fan blade	59	Hexagon fillister head screw
26	Fan cover	60	Limiter
27	Spring washer	61	Hook
28	Flat washer	62	Rope thimble
29	Hexagon bolt	63	Wire rope
30	Junction box	64	Block
31	Terminal	65	Aluminum pipe
32	Cover	66	Rope roll
33	Holding fixture	67	Wedge
34	Holding fixture	68	Bushing

