



**Vestil Manufacturing Corp.**  
 2999 North Wayne Street, P.O. Box 507, Angola, IN 46703  
 Telephone: (260) 665-7586 -or- Toll Free (800) 348-0868  
 Fax: (260) 665-1339  
 Web: [www.vestilmfg.com](http://www.vestilmfg.com) e-mail: [info@vestil.com](mailto:info@vestil.com)

## BBL-4 Fork-Mounted Bulk Bag Lifter Use and Maintenance Manual



Receiving instructions

After delivery, remove the packaging from the product. Inspect the product closely to determine whether it sustained damage during transport. If damage is discovered, record a complete description of it on the bill of lading. If the product is undamaged, discard the packaging.

Replacement Parts and Technical Service

For answers to questions not addressed in these instructions and to order replacement parts, labels, and accessories, call our Technical Service and Parts Department at (260) 665-7586. The department can also be contacted online at [http://www.vestilmfg.com/parts\\_info.htm](http://www.vestilmfg.com/parts_info.htm).

NOTE: The end-user is solely responsible for confirming that product design, use, and maintenance comply with laws, regulations, codes, and mandatory standards applied where the product is used.

Table of Contents

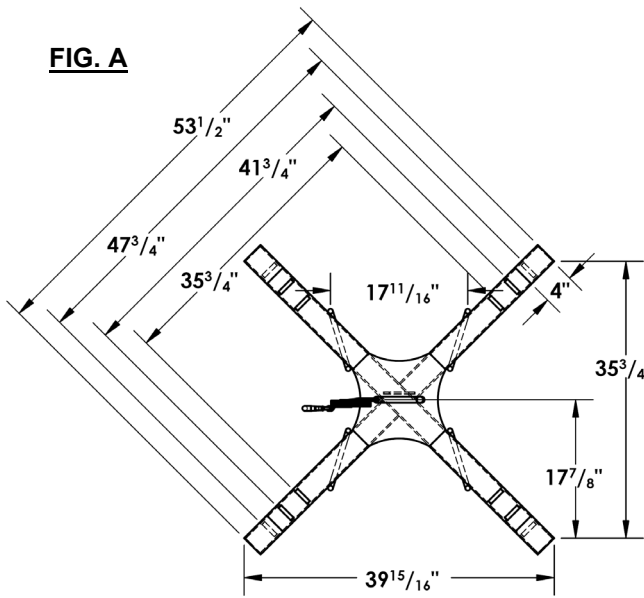
Specifications.....	2
Exploded View and Bill of Materials.....	3
Signal Words.....	3
Hazards.....	3
Using the Lifter.....	4
Record of Satisfactory Condition.....	4
Inspections & Maintenance.....	4
Labeling Diagram.....	5
Limited Warranty.....	6

# Specifications

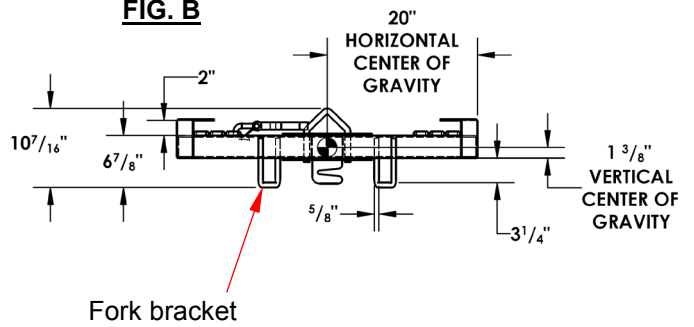
Dimensions, capacity, and net weight appear in the following diagrams and table.

Capacity: 4,000 lb. (1,818.2 kg)  
 Net weight/Lost load: 91.0 lb. (41.4 kg)  
 Safety strap: 46 inches  
 Overall width:  $39^{15}/16$  inches  
 Usable width:  $35^{3}/4$  inches  
 Overall length:  $39^{15}/16$  inches  
 Usable length:  $35^{3}/4$  inches  
 Overall height:  $10^{7}/16$  inches

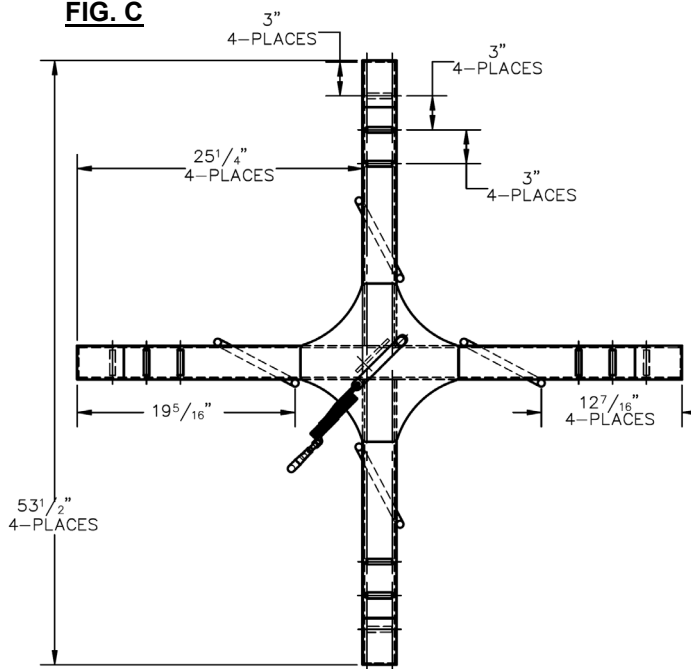
**FIG. A**



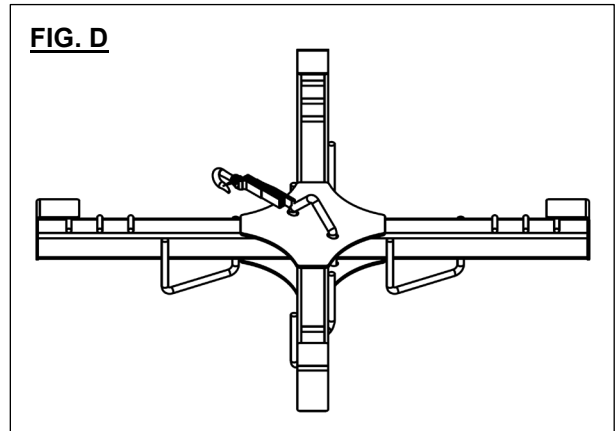
**FIG. B**



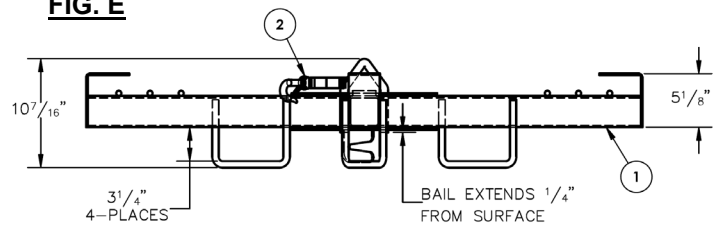
**FIG. C**



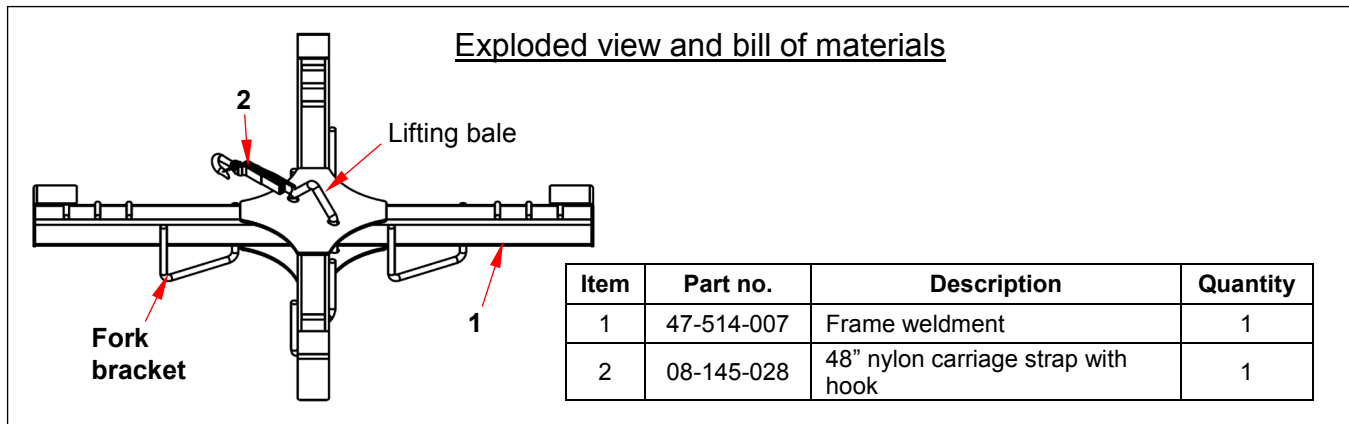
**FIG. D**



**FIG. E**



Item	Description	Quantity
1	Frame weldment	1
2	Nylon carriage strap	1



## SIGNAL WORDS

This manual classifies personal injury risks and situations that might cause property damage with signal words. Signal words indicate the seriousness of injuries that might result if a particular act does, or does not, occur.



**DANGER** Identifies a hazardous situation which, if not avoided, **WILL** result in **DEATH** or **SERIOUS INJURY**. Use of this signal word is limited to the most extreme situations.



**WARNING** Identifies a hazardous situation which, if not avoided, **COULD** result in **DEATH** or **SERIOUS INJURY**.



**CAUTION** Indicates a hazardous situation which, if not avoided, **COULD** result in **MINOR** or **MODERATE** injury.



**NOTICE** Identifies practices likely to result in product/property damage, such as operation that might damage the product.

## HAZARDS

Vestil strives to identify all foreseeable hazards associated with the use of its products. However, no manual can address every possible risk. The most effective means for avoiding injury is to read all of the instructions prior to putting the dumper into service and to apply sound judgment whenever using this device.



**WARNING** Improper or careless use of this product might result in serious personal injuries.

- *Read and understand the entire manual before installing, using, or servicing the product.* Read the manual whenever necessary to refresh your understanding of proper use and maintenance procedures.
- Review the safety messages included in the manuals of devices used with this bulk bag lifter, e.g. crane, trolley, hoist, forklift, or forklift attachment.
- **ALWAYS** inspect the lifter before each use according to the inspection procedures described in the most recent revision of [ASME B30.20](#) "Below-the-Hook Lifting Devices". B30.20 also describes inspections that should be performed frequently and periodically inspections. Conduct these inspections as detailed in the standard and with the recommended frequency.
- Properly maintain the lifter according to the [Inspections & Maintenance](#) procedures on p. 4 of this manual. These procedures to *supplement* the inspection and maintenance recommendations in ASME B30.20.
- **ALWAYS** attach the lifter to a safety hook, i.e. a hook with a self-closing latch, to prevent accidental detachment from the hook. **DO NOT** connect the lifter to a damaged or malfunctioning safety hook.
- Make sure that the travel path is clear.
- **DO NOT** remove or obscure any label. Before using the lifter, confirm that all labels are in place and easily readable from a reasonable distance. See [Labeling diagram](#) on p. 5.
- **DO NOT** allow people to ride in the bulk bag or on the lifter.
- **DO NOT** lift more than the rated load of the lifter or the bulk bag, whichever is smaller. The capacity of the lifter is 4,000 pounds (1818.2 kg). If the capacity of your bulk bag is 3,300 pounds (1500kg), then you must not attempt to lift any more than 3,300 pounds.
- **DO NOT** lift a load higher than necessary. Always travel with the bulk bag elevated only as high as necessary to avoid contact with the ground. Travel slowly. Avoid sudden stops to minimize load swing. Turn slowly and carefully.
- **DO NOT** modify this product in any way. Modifications automatically void the [Limited Warranty](#) and might make the device unsafe to use.

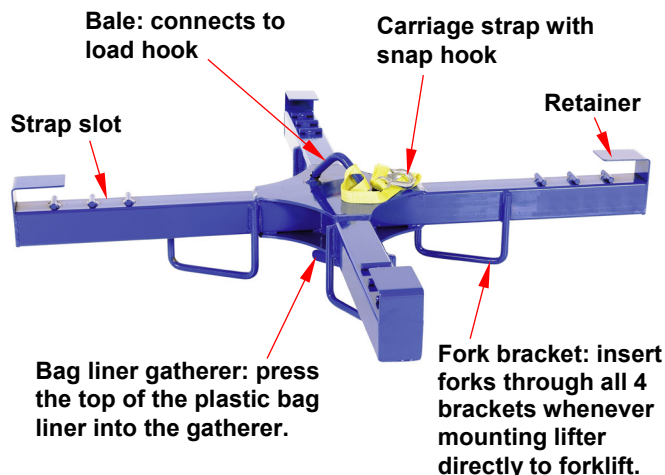
## USING THE LIFTER

The bag lifter can either be carried on the forks of a forklift, or be suspended from a hook.

**NOTE:** Capacity information appears in the [Specifications](#) section on p. 2 as well as on label #287. See [Labeling diagram](#) on p. 5. The capacity of this lifter is 4000 lb. (1818.2kg). Do not attempt to lift loads that weigh more than the capacity of your unit. The forklift or hoist used with this device must be able to support the combined weight of the lifter, the bulk bag, and the material inside the bulk bag.

### **Mounting the lifter on forks:**

- Adjust the positions of the forks on their carriage to match to location of the fork brackets on the underside of the lifter.
- Insert the forks through all 4 fork brackets;
- Adjust to location of the lifter on the forks as necessary to accommodate a bulk bag.
- Attach the carriage strap to the fork carriage *without slack*.
- Elevate the forks.
- Attach the fabric hopper/bulk bag. Attach each of the (4) straps of the bag to one of the arms of the lifter. Slide the straps over the retainers and seat them into strap slots.



### **Suspending the lifter from a load hook:**

- Attach the load hook to the bale.
- If the hook is part of another fork/front end attachment (of a forklift), fasten the carriage strap to the fork carriage *without slack*.
- Attach the fabric hopper/bulk bag. Attach each of the 4 straps of the bag to one of the arms of the lifter. Slide the straps over the retainers and seat them into the strap slots.

Because this product can be used as a fork attachment, [OSHA rule 29 CFR 1910.178](#) applies. The rule requires that you contact the manufacturer of your fork truck (or a professional engineer). The manufacturer must determine how using the lift affects the capacity, operation, and maintenance of your fork truck. The analysis can also be performed by a professional engineer. Afterwards, plates, tags, labels, etc. affixed to the truck must be updated. The

## RECORD OF SATISFACTORY CONDITION

Before putting the lifter into service, record its appearance. Thoroughly photograph the unit so that all features are clearly visible. Take close range photographs of each label and/or tag as well as the nylon carriage strap and snap hook. Collate the photographs into a single file. The file is a record of the unit in satisfactory condition. Compare the results of every inspection to this record to determine whether the unit is in satisfactory condition. Do not use it unless it is in satisfactory condition. Purely cosmetic changes, like damaged surface coating (paint or powdercoat) are not changes from satisfactory condition. However, touchup paint should be applied as soon as the damage occurs.

## INSPECTIONS & MAINTENANCE

Regular inspections and maintenance are essential for keeping the unit in satisfactory condition. We strongly recommend that you acquire a copy of the most recent revision of ASME B30.20 (the "Standard") before putting the lifter into service. Inspect the device as described below, and also apply the inspections and maintenance recommendations from the Standard.

### (A) Before each use, inspect the following:

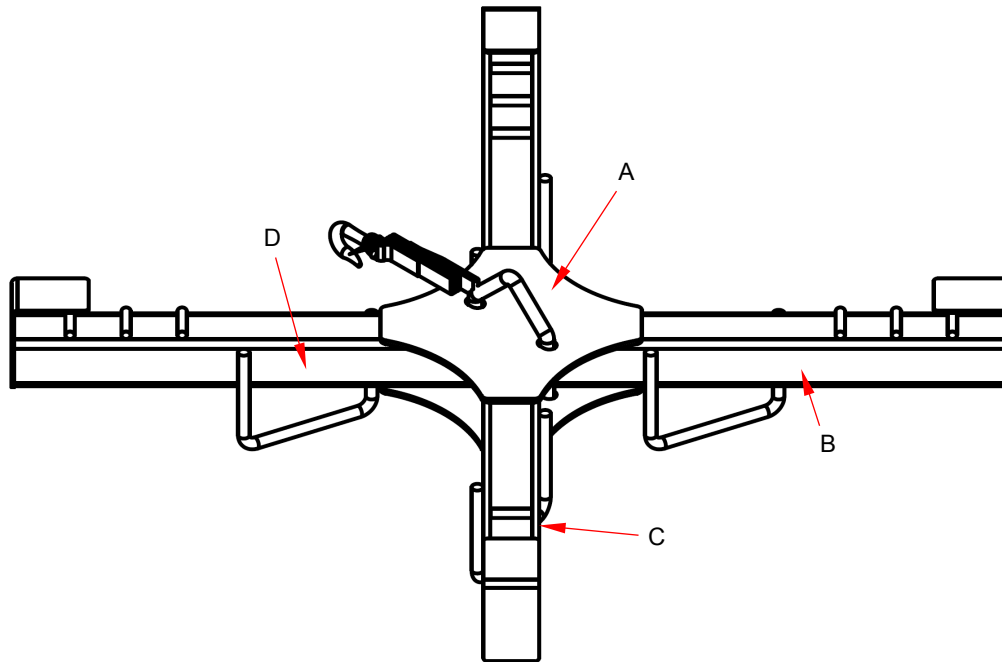
- 1.) Frame: Inspect the bale, fork brackets, and main frame for deformations, cracks, etc.
- 2.) Carriage strap: Closely examine the strap, snap hook, and the hook at the free end of the strap. Look for thinned, frayed, torn, or significantly worn areas.
- 3.) Labels & tags: Confirm that each label and/or tag is present and easily readable from a reasonable distance.

### (B) Annual inspection:

At least once per year, load the lifter to full capacity. Lift the load for about 1 minute; then lower it and disconnect the load from the lifting hook. Closely inspect the lifter for metal fatigue, cracks, warps, and other damage. If any significant damage is observed, permanently remove the unit from service.

## LABELING DIAGRAM

The unit should be labeled as shown in the diagram. However, label content and location are subject to change so your product might not be labeled exactly as shown. Replace all labels that are damaged, missing, or not easily readable (e.g. faded). Order replacement labels by contacting the [Parts Department](http://www.vestilmfg.com/parts_info.htm) online at [http://www.vestilmfg.com/parts\\_info.htm](http://www.vestilmfg.com/parts_info.htm). Alternatively, you may request replacement parts and/or service by calling (260) 665-7586 and asking the operator to connect you to the Parts Department.



A: Label 1000

Model No. _____	Serial No. _____
No. Modelo _____	No. Serie _____
Capacity _____ lbs.	Lifter Weight _____ lbs.
Capacidad _____ kgs.	Peso del Elevador _____ kgs.
BHT-1 Design Category: B	BHT-1 Service Category: 1
BHT-1 Categoría de Diseño B	BHT-1 Categoría de Servicio: 1
<b>Read Owners Manual for product safety warnings</b>	
<b>Lea Manual de Proprietarios para advertencias de seguridad de producto</b>	
1000	

B: Label 218

⚠ WARNING	⚠ ADVERTENCIAS
Improper use might result in death or serious personal injury. Attach device to fork carriage with safety chain/strap. <ul style="list-style-type: none"> <li>• Drive lift truck forward until forks contact ends of fork pockets.</li> <li>• Chain/straps must not be able to disconnect (slide free) from carriage.</li> <li>• Safety chain/strap must be taut. Connect chain/strap to carriage via shortest line.</li> </ul>	El uso impropio puede resultar en muerte o heridas personales. Atar aparato al mástil del montacargas con cadenas/correas. <ul style="list-style-type: none"> <li>• Maneje el montacargas para adelante hasta que las cuñas hagan contacto con la orilla del bolsillo de las cuñas.</li> <li>• La cadenas y correas no deben de deslizarse (soltarse) del mástil del montacargas.</li> <li>• La cadena/correa de seguridad debe de estar apretado. Asegure la cadena/correa al mástil via la ruta mas corta.</li> </ul>
	218 rev 0910

C: Label 675

⚠ WARNING	⚠ ADVERTENCIA
<ul style="list-style-type: none"> <li>• DO NOT exceed rated capacity</li> <li>• DO NOT use if damaged, malfunctioning, or missing parts</li> <li>• DO NOT lift people OR lift loads over people</li> <li>• DO NOT raise load higher than necessary</li> <li>• DO NOT leave a suspended load unattended</li> <li>• DO NOT use lifter unless you read and understand the owner's manual</li> <li>• DO NOT alter OR modify lifter</li> <li>• DO NOT remove OR obscure any label</li> <li>• STAY CLEAR of suspended loads</li> <li>• Secure load before using this device</li> </ul>	<ul style="list-style-type: none"> <li>• NO exceda la capacidad tasada</li> <li>• NO USE is las partes estan dañadas, no funcionan correctamente o faltan partes.</li> <li>• NO eleve al personal o eleve cargas sobre el personal</li> <li>• NO eleve la carga mas alto de lo necesario</li> <li>• NO deje desatendida una carga que este suspendida</li> <li>• NO use el elevador a no ser que haya leído y entendido las instrucciones del manual del propietario</li> <li>• NO altere o modifique el elevador</li> <li>• NO quite u oscurezca ninguna etiqueta</li> <li>• MANTENGASE alejado de las cargas suspendidas</li> <li>• Asegure la carga antes de usar este dispositivo.</li> </ul>
	675 rev 1213

D: Label 1049

⚠ WARNING
Improper use of this fork attachment might result in death or serious injury. <ul style="list-style-type: none"> <li>• Using this front end attachment affects lift truck center of gravity.</li> <li>• Before using this fork attachment, US Federal regulation 29 CFR 1910.178 requires you to contact the manufacturer of your lift truck and request:                             <ol style="list-style-type: none"> <li>1. Written approval [29 CFR 1910.178(a)(4)]</li> <li>2. Markings for (fork) lift truck that:                                     <ul style="list-style-type: none"> <li>- Identify the attachment;</li> <li>- Give approximate weight of truck and attachment at maximum elevation with laterally-centered load. [29 CFR 1910.178(a)(5)].</li> </ul> </li> </ol> </li> <li>• <b>DO NOT</b> use UNTIL lift truck is marked with corrected capacity tags.</li> </ul>
1049 rev 1118

## LIMITED WARRANTY

Vestil Manufacturing Corporation (“Vestil”) warrants this product to be free of defects in material and workmanship during the warranty period. Our warranty obligation is to provide a replacement for a defective, original part covered by the warranty after we receive a proper request from the Warrantee (you) for warranty service.

### Who may request service?

Only a warrantee may request service. You are a warrantee if you purchased the product from Vestil or from an authorized distributor AND Vestil has been fully paid.

### Definition of “original part”?

An original part is a part used to make the product as shipped to the Warrantee.

### What is a “proper request”?

A request for warranty service is proper if Vestil receives: 1) a photocopy of the Customer Invoice that displays the shipping date; AND 2) a written request for warranty service including your name and phone number. Send requests by one of the following methods:

<u>US Mail</u>	<u>Fax</u>	<u>Email</u>
Vestil Manufacturing Corporation 2999 North Wayne Street, PO Box 507 Angola, IN 46703	(260) 665-1339 <u>Phone</u> (260) 665-7586	<a href="mailto:info@vestil.com">info@vestil.com</a> Enter “Warranty service request” in subject field.

In the written request, list the parts believed to be defective and include the address where replacements should be delivered. After Vestil receives your request for warranty service, an authorized representative will contact you to determine whether your claim is covered by the warranty. Before providing warranty service, Vestil will require you to send the entire product, or just the defective part (or parts), to its facility in Angola, IN.

### What is covered under the warranty?

The warranty covers defects in the following original, dynamic parts: motors, hydraulic pumps, motor controllers, and cylinders. It also covers defects in original parts that wear under normal usage conditions (“wearing parts”), such as bearings, hoses, wheels, seals, brushes, and batteries.

### How long is the warranty period?

The warranty period for original dynamic components is 90 days. For wearing parts, the warranty period is 90 days. Both warranty periods begin on the date Vestil ships the product to the Warrantee. If the product was purchased from an authorized distributor, the periods begin when the distributor ships the product. Vestil may, at its sole discretion, extend a warranty period for products shipped from authorized distributors by up to 30 days to account for shipping time.

### If a defective part is covered by the warranty, what will Vestil do to correct the problem?

Vestil will provide an appropriate replacement for any *covered* part. An authorized representative of Vestil will contact you to discuss your claim.

### What is not covered by the warranty?

The Warrantee (you) is responsible for paying labor costs and freight costs to return the product to Vestil for warranty service.

### Events that automatically void this Limited Warranty.

- Misuse;
- Negligent assembly, installation, operation or repair;
- Installation/use in corrosive environments;
- Inadequate or improper maintenance;
- Damage sustained during shipping;
- Collisions or other accidents that damage the product;
- Unauthorized modifications: Do not modify the product IN ANY WAY without first receiving written authorization from Vestil.

### Do any other warranties apply to the product?

Vestil Manufacturing Corp. makes no other express warranties. All implied warranties are disclaimed to the extent allowed by law. Any implied warranty not disclaimed is limited in scope to the terms of this Limited Warranty. Vestil makes no warranty or representation that this product complies with any state or local design, performance, or safety code or standard. Noncompliance with any such code or standard is not a defect in material or workmanship.

