

## DYMS10

Assembly instructions for Model Number DYMS10

Before starting:

Remove everything from box and lay them out. Refer to the drawings and identify all parts.


### Tools needed:

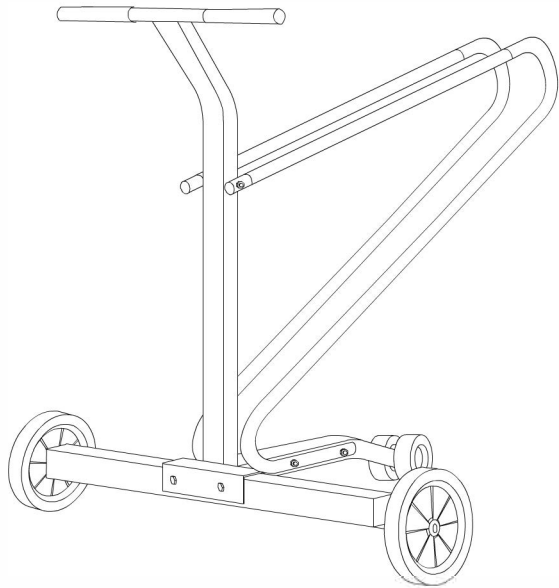
One 3/4" wrench 













Two 1/2" wrenches 

Hammer 

### Tools supplied

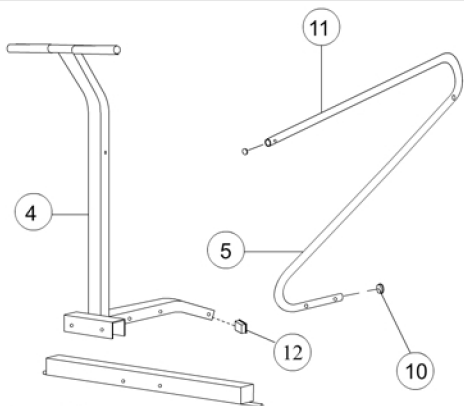
Hollow Tube 



Item	Qty.	Description
 1	1	Wheel support tube
 2	2	8" Wheel
 3	2	1/2" Capnut
 4	1	Center frame
 5	2	Main rack
 6	4	Cap screw, 5/16-18 x 3 1/2"
 7	6	Lock nut 1/4"
 8	2	Cap screw, 5/16-18 x 2 1/4"
 9	2	2" Wheel
 10	4	Round tube closure
 11	2	Plastic tubing
 12	1	Square tube closure

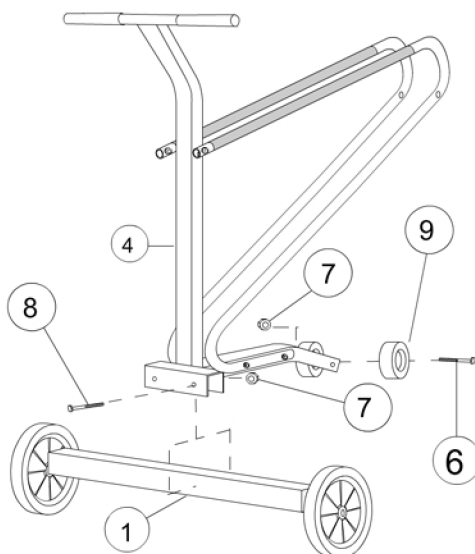


## DYMS10 Assembly Instructions

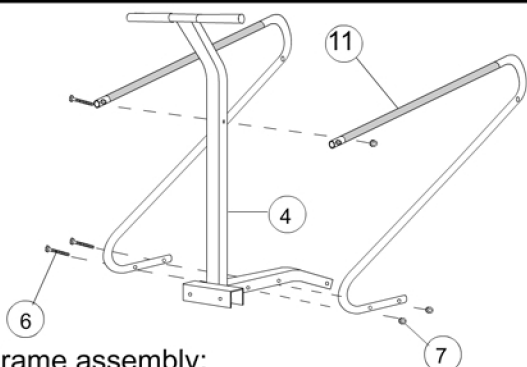


### 1. Inserting tube closures

- Insert square tube closures (part #12)
- Insert round tube closures (part #10) at each end of main racks (part #5).

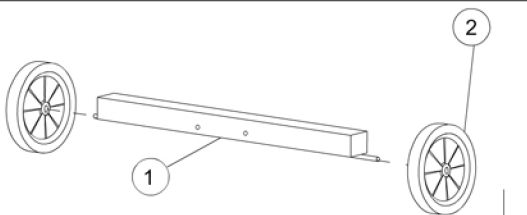


- Attach wheel support tube (part #1) to center frame (part #4) using two 5/16"-18 x 2 1/4" (part #8)
- Use the lock nuts (part# 7) to secure screws. Use two 1/2" wrenches to tighten.
- Using one 5/16" x 3 1/2" cap screw (part #6), attach two 2" wheels (part #9) to the center frame. Use a locknut (part #7) to secure the screw. Use two 1/2" socket wrenches to tighten. Don't overtighten, as it will prevent the wheels from turning.



### 2. Rack/Frame assembly:

- Slide each of the plastic tube (part# 11) on to top part of each rack.
- Using three 5/16"-18 x 3 1/2" cap screws (part #6), attach main racks (part #5) to center frame (part #4).
- Use the locknuts (part# 7) to secure screws. Use two 1/2" socket wrenches to tighten.



### 3. Center wheels assembly

- Insert each 8" wheel (part #2) on rods that protrude from the wheel support tube (part #1).
- Place cap nuts (part #3) on the rod after the wheels have been inserted.
- Place supplied hollow tube over cap nuts and bang tube with hammer. NOTE: Don't over-bang, as this will cause wheels to become too tight.

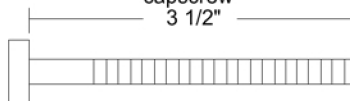
cap nut 1/2"



Lock nut, 1/4"



capscrew  
3 1/2"



capscrew  
2 1/4"

