

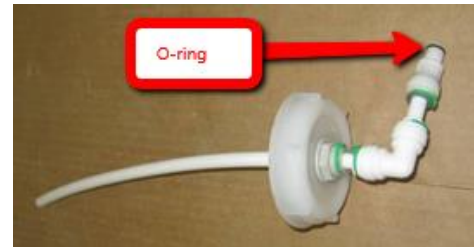
Portable Sink Pump Troubleshooting

Problem: The pump turns on but does not pump water or shut off.

Solution: It is likely that the pump is drawing in air so it has trouble getting the water through the system. The tubing and connections from the fresh water tank to the pump should be checked to make sure they are tight together and not leaking air. The pump contains a pressure switch that will turn the pump off once water pressure builds in the water lines. If there is air in the lines, the pump will not be able to build enough pressure to turn off the pump.

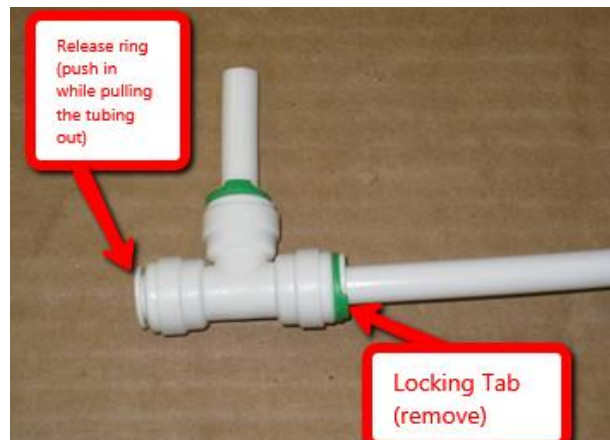
1. Check to make sure the bottom of the tube in the fresh water tank is underwater. If it isn't underwater, fill the tank up so that the end of the tub is submerged.

2. Older sinks with the doors on the back of the cabinet included a quick-connect fitting near the clean water tank. If equipped with a quick-connect fitting on the clean water line, check the O-ring on the male section of the fitting for damage or cuts. If it is damaged, replace the male section with a new fitting (#XCKA). (Please note that 1370JC-1373JC and 1382JC sinks do not have a quick connect fitting.)



3. Check each tubing connection from the fresh water tank to the pump to make sure they are pushed together tightly. If the connections are not tight together, the pump will be pulling in air and won't be able to pump water.

- a. The connections can be taken apart by removing the horseshoe-shaped locking tab (green on the picture at right, but the color varies) and pressing the release ring around the tubing while pulling the tubing out of the connection.



- b. Check the area near the end of the tubing for any deep scratches as that may cause air leaks. If there are large scratches, cut off the end and re-insert the tubing fully back into the connection.

- c. After reinserting the tubing fully into the connection, pull on it to ensure that it is locked in. Reinstall the locking tabs.
4. If all the connections are tight and the end of the tube is in the water, the pump should pump water. To relieve any air in the lines, turn the unit on so that the pump is running and open the faucet to let the air escape. It may take a couple minutes for the pump to get all the air out. Once there is only water coming out of faucet spout, close the faucet and the pump should shut off when the pressure in the lines builds up.