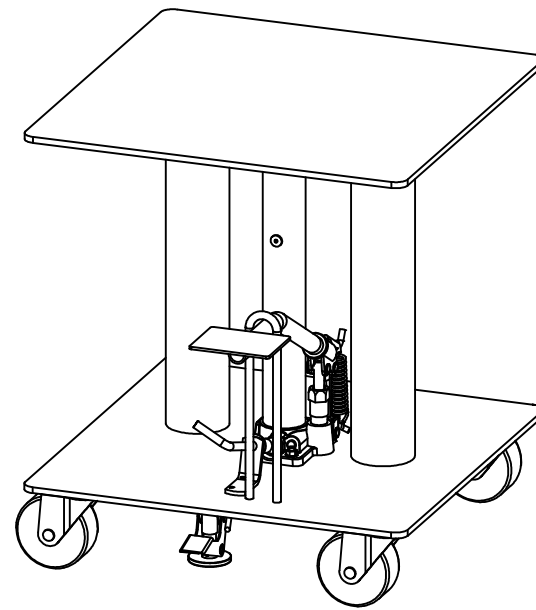
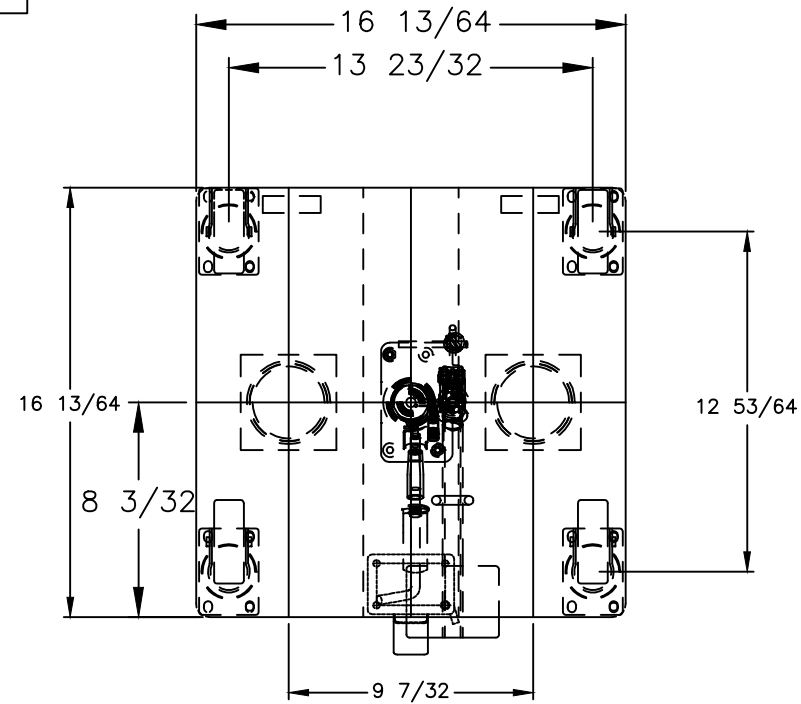


492227

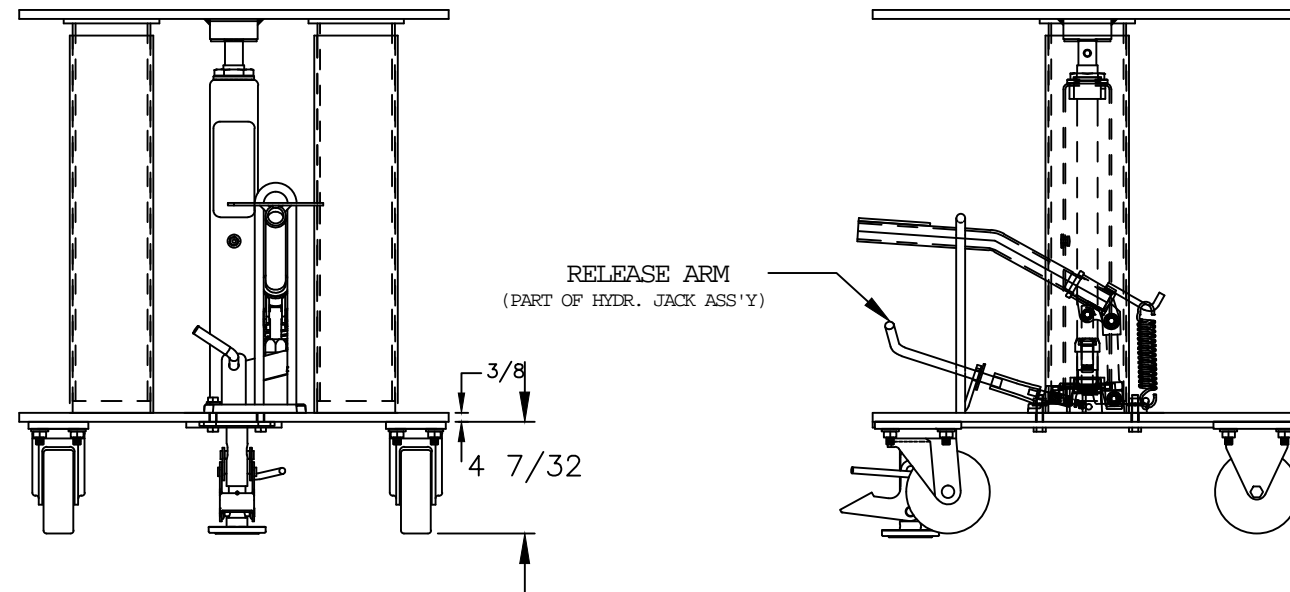


Foot Operated Hydraulic Lift Table

- Top and base 3/8" steel.
- 2 rigid and 2 swivel 3.5" diameter rubber casters.
- Optional phenolic resin and polyurethane caster wheels.
- Floor lock.
- Two post.

Specs

- Capacity: 300 lbs
- Table size: 18" x 18"
- Lowered height: 24"
- Raised height: 38"
- Caster size: 3.5"
- Lift: 14"
- Weight: 124 lbs



THIS DRAWING IN ALL PARTICULARS IS WESCO INDUSTRIAL PRODUCTS INC. PROPERTY. ALL RIGHTS OF DESIGN, INVENTION OR USE OF ARE RESERVED.

REV.	ECN & DATE	REVISIONS	WESCO INDUSTRIAL PRODUCTS INC.		
			LANSDALE PENNA. 19446		
			PART NAME HT-314-FR		DRAWN:
			TOLERANCE UNLESS OTHERWISE SPECIFIED		CHECKED:
			FRACTION 3 PLACE DECIMAL 2 PLACE DECIMAL		APP. ENGR.
			SCALE:		
			B- 492227		
			SHEET 1 OF 1		
			BREAK ALL SHARP EDGES AND REMOVE ALL BURRS		