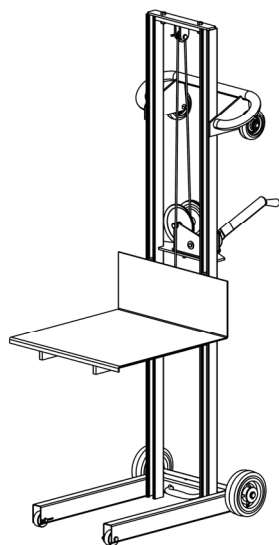


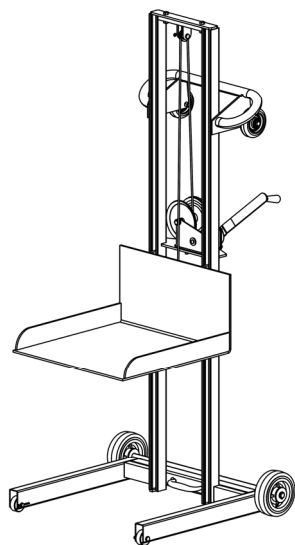


**Vestil Manufacturing Corp.**  
 2999 North Wayne Street, P.O. Box 507, Angola, IN 46703  
 Telephone: (260) 665-7586 -or- Toll Free (800) 348-0868  
 Fax: (260) 665-1339  
 Web: [www.vestilmfg.com](http://www.vestilmfg.com) e-mail: [info@vestil.com](mailto:info@vestil.com)

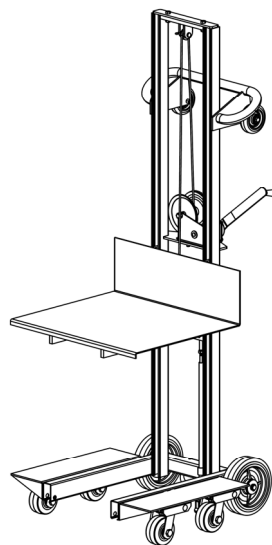
## LLW, LLPW, ALLW, & ALLPW Light Load Lifters Use and Maintenance Manual



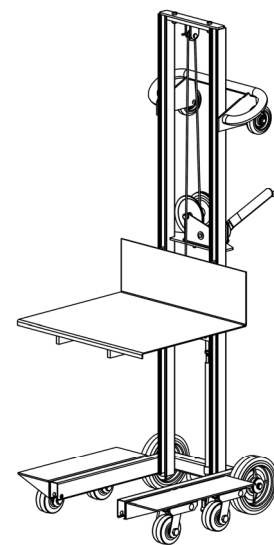
(A)LLW-FW



(A)LLPW-FW



(A)LLW-4SFL



(A)LLPW-4SFL

**Receiving instructions:**

After delivery, remove the packaging from the product. Inspect the product closely to determine whether it sustained damage during transport. If damage is discovered, record a complete description of it on the bill of lading. If the product is undamaged, discard the packaging.

**NOTE:**

The end-user is solely responsible for confirming that product design, installation, use, and maintenance comply with laws, regulations, codes, and mandatory standards applied where the product is used.

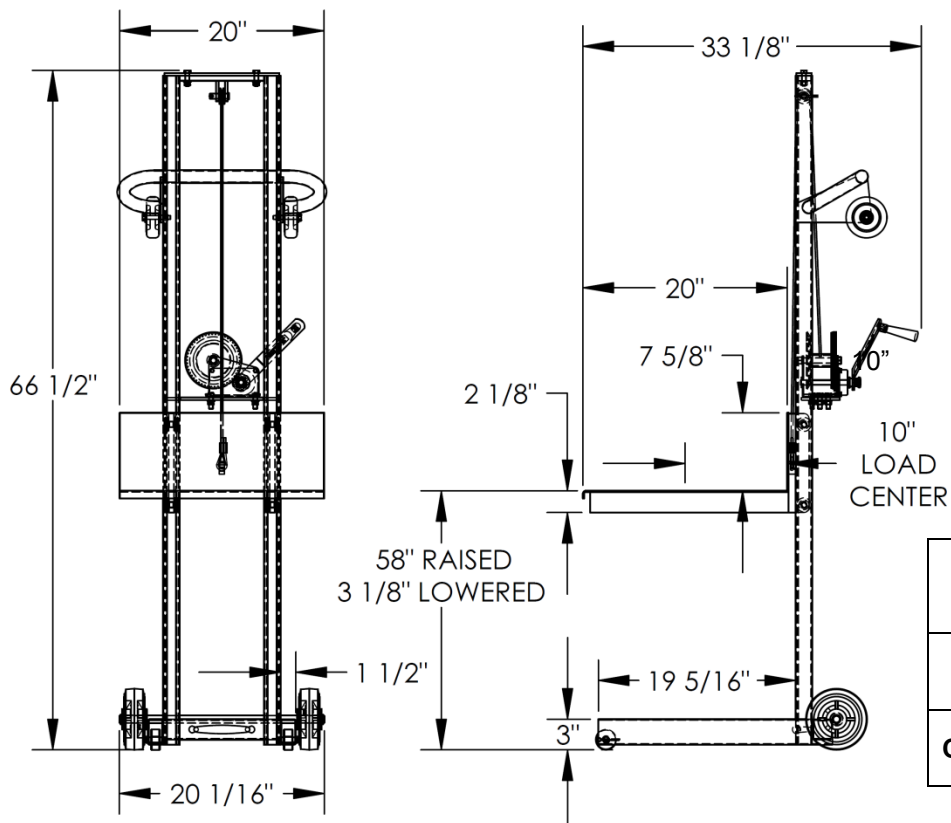
Table of Contents

Specifications (dimensions, capacity, net weight): LLW & ALLW.....	2
Specifications (dimensions, capacity, net weight): LLPW & ALLPW.....	3
Signal Words.....	4
Hazards of Improper Use.....	4
LLW-202058-FW Exploded Parts Diagram & Bill of Materials.....	5
ALLW-2020-FW Exploded Parts Diagram & Bill of Materials.....	6
LLW-242060-4SFL Exploded Parts diagram & Bill of materials.....	7
ALLW-2420-4SFL Exploded Parts Diagram & Bill of Materials.....	8
LLPW-500-FW Exploded Parts Diagram & Bill of Materials.....	9
ALLPW-500-FW Exploded Parts Diagram & Bill of Materials.....	10
LLPW-500-4SFL Exploded Parts Diagram & Bill of Materials.....	11
ALLPW-500-4SFL Exploded Parts Diagram & Bill of Materials.....	12
Raising and Lowering the Deck.....	13
Use Instructions.....	13 - 14
Inspections & Maintenance.....	14 - 15
Labeling Diagram.....	15
Limited Warranty.....	16

**Specifications:**

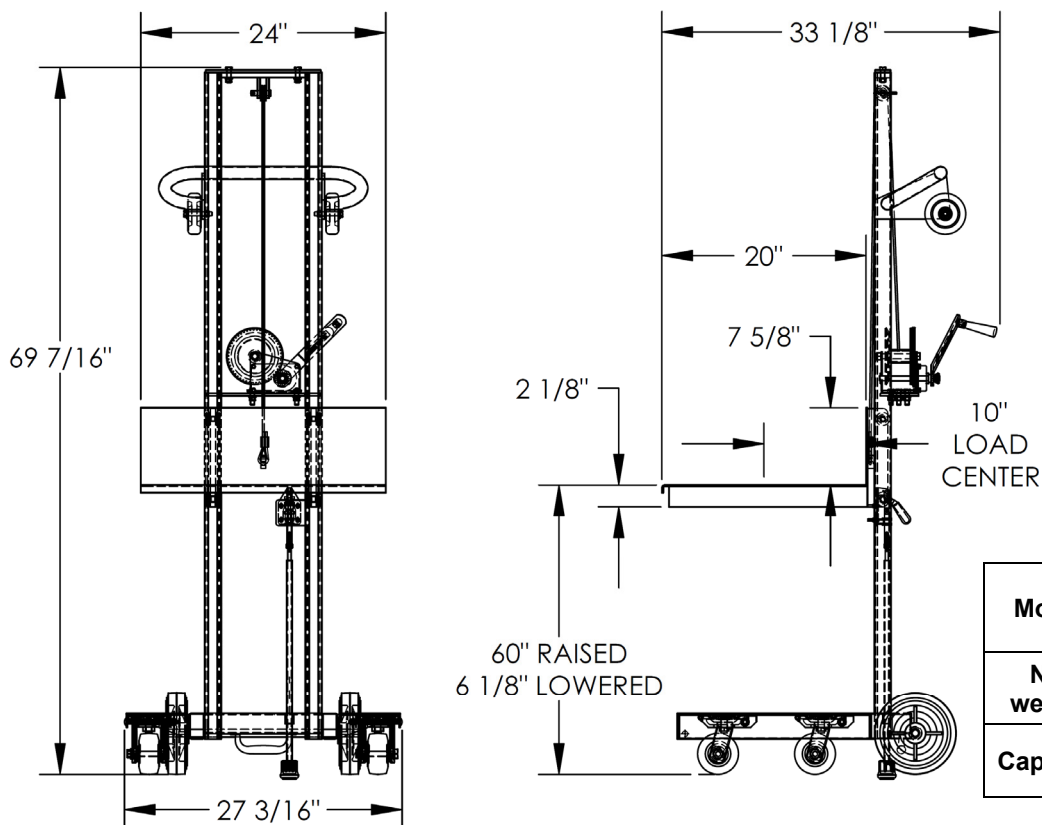
Dimensions and other product specifications for standard lifts appear in the diagrams tables on pages 2 & 3.

**LLW-FW & ALLW-FW**



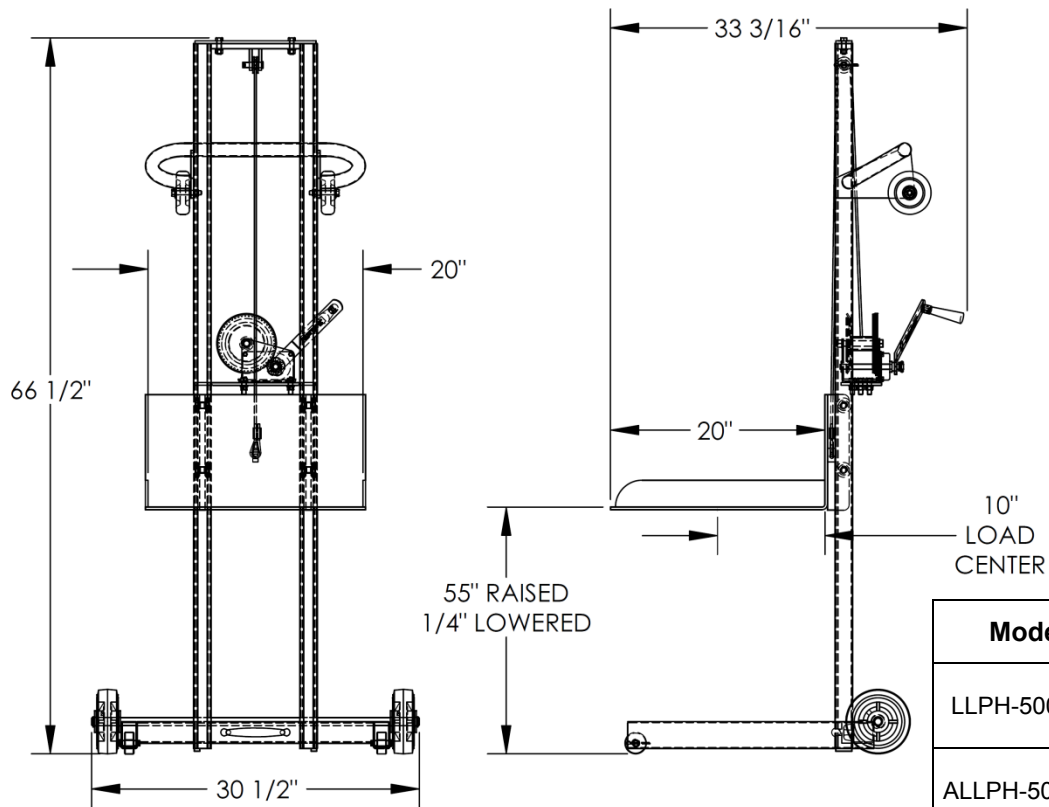
Model	LLW-202058-FW	ALLW-2020-FW
Net weight	131 lb. 59.3 kg	84 lb. 38.2 kg
Capacity	500 lb. 227.3 kg	400 lb. 181.8 kg

**LLW-4SFL & ALLW-4SFL**



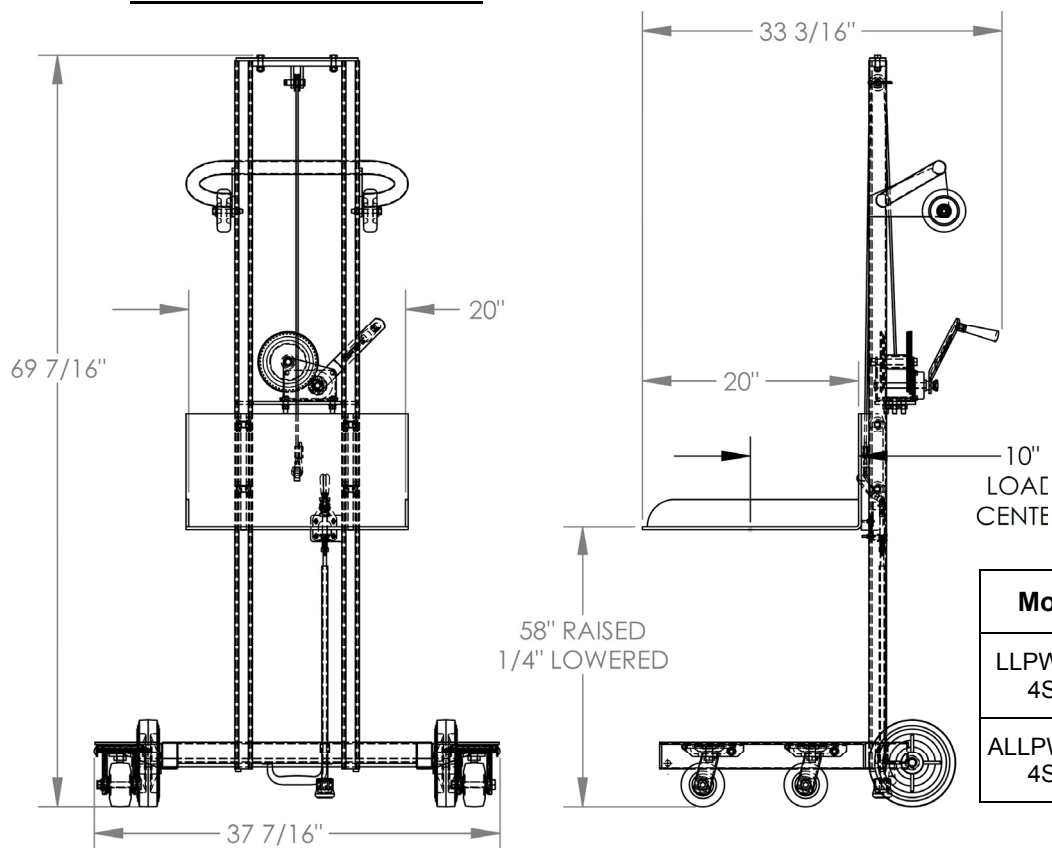
Model	LLW-242060-4SFL	ALLW-2420-4SFL
Net weight	192 lb. 87.0 kg	127 lb. 57.7 kg
Capacity	500 lb. 227.3 kg	400 lb. 181.8 kg

**LLPW-FW & ALLPW-FW**



Model	Net weight	Capacity
LLPH-500-FW	156 lb. 70.9 kg	500 lb. 227.3 kg
ALLPH-500-FW	93 lb. 42.2 kg	400 lb. 181.8 kg

**LLPW-4SFL & ALLPW-4SFL**



Model	Net weight	Capacity
LLPW-500-4SFL	213 lb. 96.7 kg	500 lb. 227.3 kg
ALLPW-500-4SFL	135 lb. 61.2 kg	400 lb. 181.8 kg

## Signal Words:

This manual uses SIGNAL WORDS to indicate the likelihood of personal injuries, as well as the probable seriousness of those injuries, if the product is misused in the ways described. Other signal words call attention to uses of the product likely cause property damage. The signal words used appear below along with the meaning of each word:



Identifies a hazardous situation which, if not avoided, WILL result in DEATH or SERIOUS INJURY. Use of this signal word is limited to the most extreme situations.



Identifies a hazardous situation which, if not avoided, COULD result in DEATH or SERIOUS INJURY.



Indicates a hazardous situation which, if not avoided, COULD result in MINOR or MODERATE injury.



Identifies practices likely to result in product/property damage, such as operation that might damage the product.

## Hazards of Improper Use:

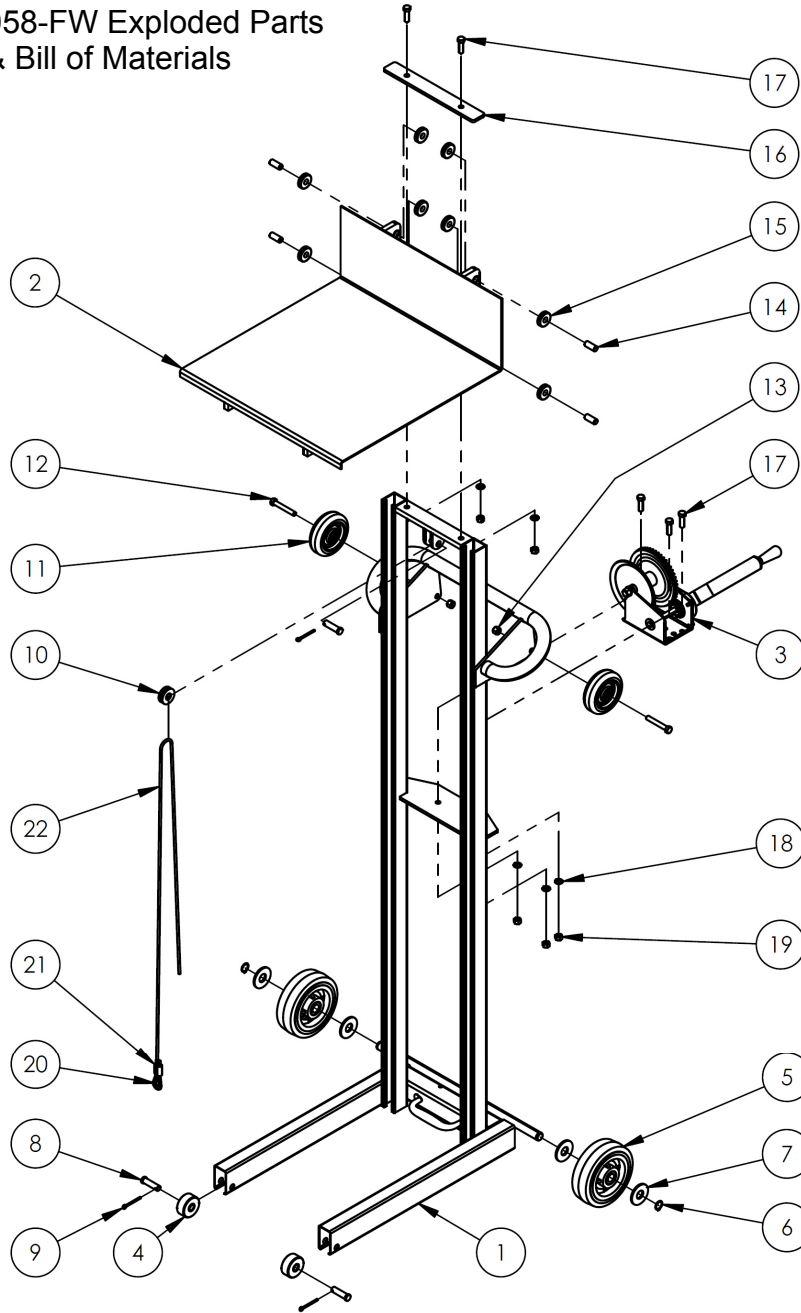
We strive to identify foreseeable hazards associated with the use of our products. However, material handling is dangerous. No manual can address every risk. Ultimately, the most effective means for preventing injury is for the end-user to apply sound judgment whenever using this lifter.



Improper or careless operation might result in serious personal injuries. Always apply material handling techniques learned during training.

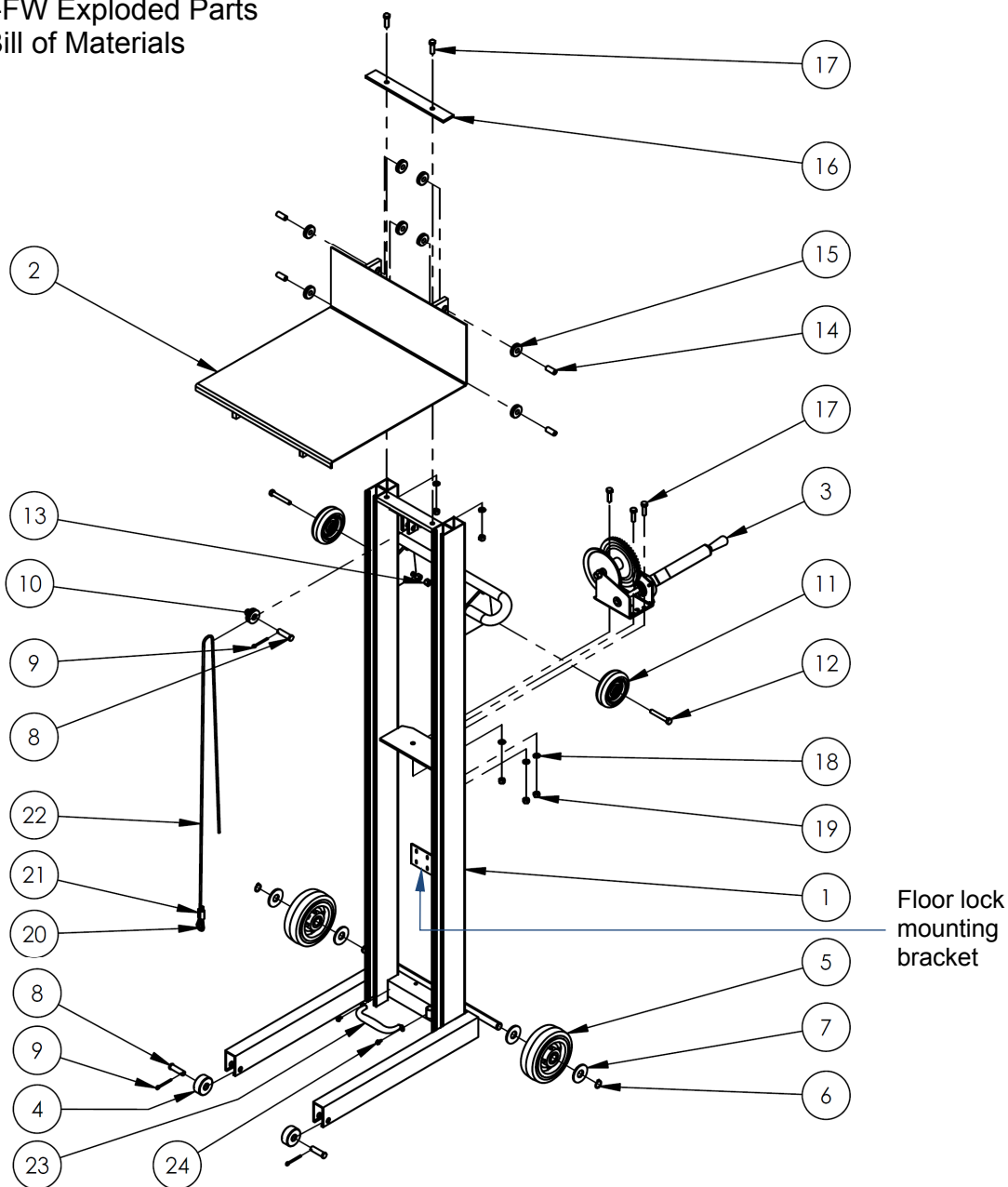
- ***Failure to read and understand the entire manual before assembling, using or servicing the product constitutes misuse.*** Read the manual to refresh your understanding of proper use and maintenance procedures as necessary.
- Inspect the lifter before each use according to the instructions that appear on p. 14-15. DO NOT use the lifter unless it is in normal condition.
- Before using the lifter, inspect the area where it will be used. Look for conditions that affect the use of the lifter.
- Regardless of whether the lifter is loaded or unloaded, DO NOT stand or travel under the deck.
- Instruct others to stay clear of the device and the supported load during operation.
- Avoid contact with moving parts during operation, i.e. the cable or cylinder, deck, wheels, casters, and rollers.
- DO NOT allow people to ride on the lifter.
- Failure to properly position a load on the deck might result in injury:
  1. DO NOT exceed the capacity. Capacity information appears on label 287 as shown in "Labeling diagram" on p. 16 (also see appropriate "Product specifications" diagram and table on either p. 2 or p. 3).
  2. ALWAYS properly center and evenly distribute the load. DO NOT handle off-center loads or loads that cannot be centered.
  3. Start/stop gradually to avoid upsetting the load on the deck. Strap loads to the deck if they might roll or slide.
  4. NEVER tilt the lifter while carrying a load.
- ALWAYS observe the deck while raising and lowering it. The deck should maintain levelness and should rise smoothly. Watch for binding or jerky movement and listen for unusual noises. Tag the unit "Out of order" and do not use it if you observe anything abnormal.
- Only use this lifter on even, level ground. DO NOT transport loads across inclines or stairs.
- Enlist a coworker to help you lift, load, and unload the unit whenever necessary.
- DO NOT perform maintenance on this product UNLESS it is unloaded and the deck is lowered. If the unit requires repairs, ONLY install manufacturer-approved replacement parts.
- Before leaving the unit unattended, unload it and lower the deck.
- DO NOT use the lifter UNLESS all labels are in place and readable (see "Labeling diagram" on p. 16).
- DO NOT modify this product in any way. Modifying the lifter automatically voids the limited warranty and might make it unsafe to use.

LLW-202058-FW Exploded Parts Diagram & Bill of Materials



Item	Part no.	Description	Qty.	Item	Part no.	Description	Qty.
1	21-514-005	Weldment, frame	1	12	11113	Hex bolt, gr. A, plain finish, $\frac{3}{8}$ " - 16 x $2\frac{1}{2}$ "	2
2	21-513-002	Weldment, deck	1	13	37024	Nylon insert lock nut, gr. 2, zinc finish, $\frac{3}{8}$ "-16	2
3	21-042-002-001	Hand winch, foldable handle grip	1	14	21-112-002	Pin, roller	4
4	21-527-002	Subassembly, roller with bushing	2	15	21-027-003	Roller, guide	8
5	16-132-058	Wheel, poly on poly	2	16	21-017-016	Bar stiffener	1
6	68015	External retaining ring, phosphate, $\frac{3}{4}$ "	2	17	11107	Hex bolt, gr. A, zinc finish, $\frac{3}{8}$ "-16 x $1\frac{1}{4}$ "	5
7	33018	USS flat washer, zinc plated, $\frac{3}{4}$ "	4	18	33622	Split lock washer, carbon steel, medium zinc finish, $\frac{3}{8}$ "	5
8	21-112-003	Pin, $\frac{1}{2}$ " x $1\frac{15}{16}$ " retaining clevis	3	19	36106	Hex nut, gr. A, zinc plated, $\frac{3}{8}$ "-16	5
9	65107	Cotter pin, zinc finish, $\frac{5}{32}$ " x 2"	3	20	21-145-013	Specialty hardware, thimble	1
10	21-527-001	Pulley with bushing subassembly	1	21	21-145-012	Specialty hardware, cable anchor	1
11	16-132-009	PP-4/1.25-W	2	22	21-145-014	Specialty hardware, $\frac{3}{16}$ " cable	1

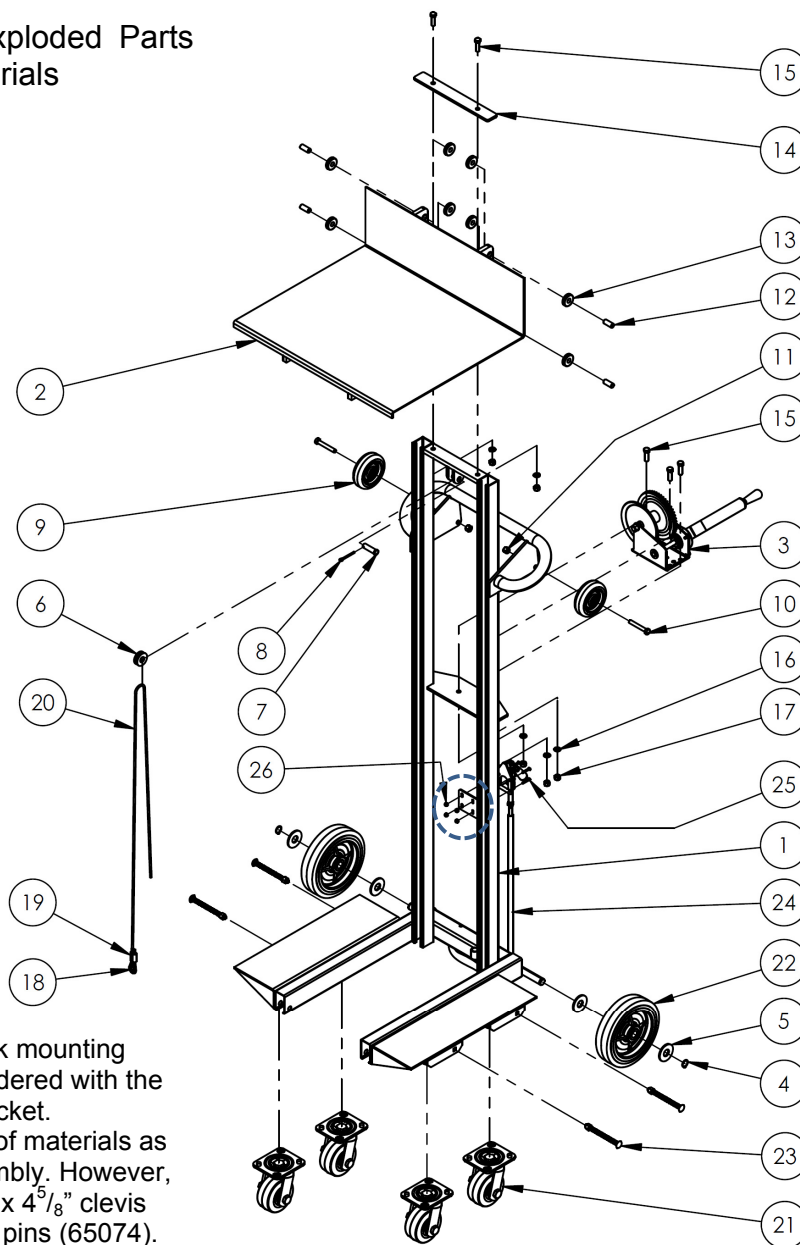
ALLW-2020-FW Exploded Parts Diagram & Bill of Materials



**NOTE:**  
Diagram includes floor lock mounting bracket; units not ordered with the floor lock option lack this bracket.

Item	Part no.	Description	Qty.	Item	Part no.	Description	Qty.
1	42-514-008	Weldment, frame	1	13	37024	Nylon insert lock nut, gr. 2, zinc finish, $\frac{3}{8}$ " - 16	2
2	42-513-006	Weldment, deck	1	14	21-112-002	Pin, roller	4
3	21-042-002-001	Manual winch, foldable handle	1	15	21-027-003	Roller, guide	8
4	21-527-002	Subassembly, roller with bushing	2	16	21-017-087	Stiffener, bar	1
5	16-132-058	Wheel, poly-on-poly	2	17	11107	Hex bolt, gr. A, zinc finish, $\frac{3}{8}$ " - 16 x $1\frac{1}{4}$ "	5
6	68015	External retaining ring, phosphate, $\frac{3}{4}$ "	2	18	33622	Split lock washer, carbon steel, medium zinc finish, $\frac{3}{8}$ "	5
7	33018	USS flat washer, zinc plated, $\frac{3}{4}$ "	4	19	36106	Hex nut, gr. A, zinc plated, $\frac{3}{8}$ "-16	5
8	21-112-003	Pin, $\frac{1}{2}$ "x $1\frac{15}{16}$ " retaining clevis	3	20	21-145-013	Specialty hardware, thimble	1
9	65107	Cotter pin, zinc finish, $\frac{5}{32}$ " x 2"	3	21	21-145-012	Specialty hardware, cable anchor	1
10	21-527-001	Pulley with bushing subassembly	1	22	21-145-014	Specialty hardware, $\frac{3}{16}$ " cable	1
11	16-132-009	PP-4/1.25-W	2	23	13-025-004-002	Handle	1
12	11113	Hex bolt, gr. A, plain finish, $\frac{3}{8}$ " - 16 x $2\frac{1}{2}$ "	2	24	31802	Screw, self-tapping	2

LLW-242060-4SFL Exploded Parts Diagram & Bill of Materials

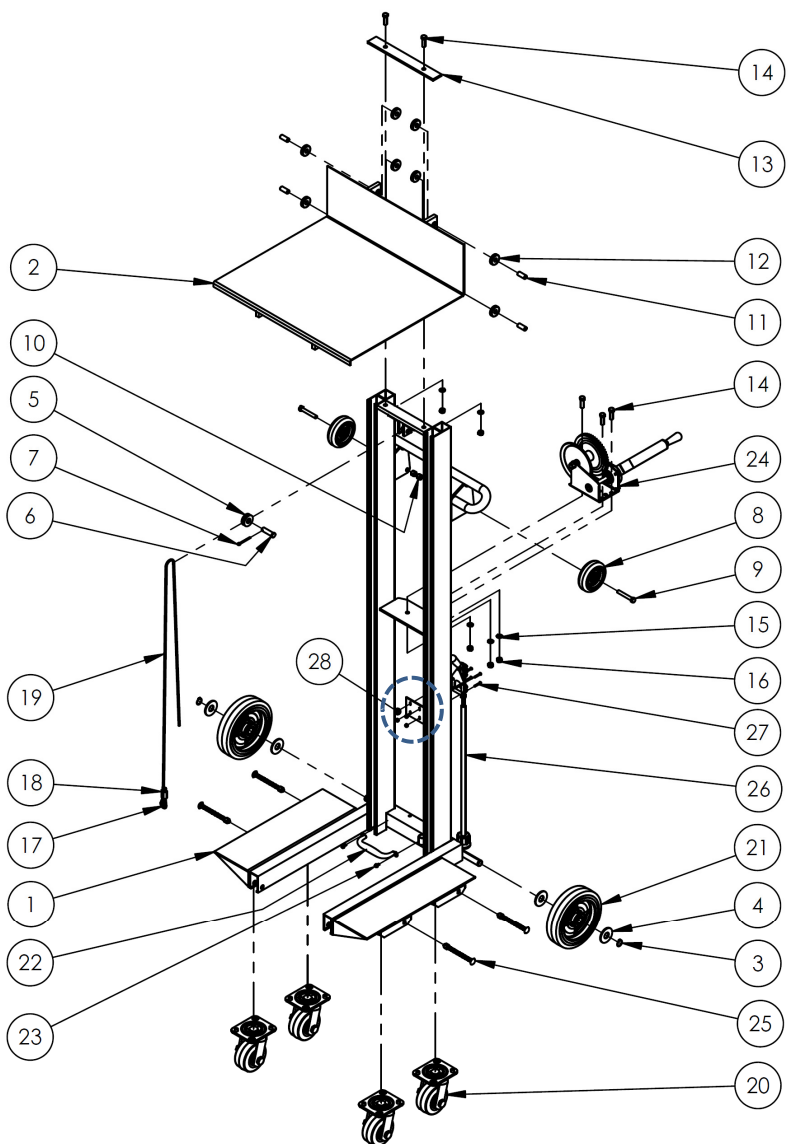


NOTES:

1. Diagram includes floor lock mounting bracket (circled); units not ordered with the floor lock option lack this bracket.
2. Item 23 is listed in the bill of materials as a carriage bolt and nut assembly. However, some units might use 0.374" x 4<sup>5</sup>/<sub>8</sub>" clevis pins (99-612-006) and cotter pins (65074).

Item	Part no.	Description	Qty.	Item	Part no.	Description	Qty.
1	21-514-007	Weldment, frame	1	14	21-017-016	Bar stiffener	1
2	21-513-003	Weldment, deck	1	15	11107	Hex bolt, gr. A, zinc finish, <sup>3</sup> / <sub>8</sub> "-16x1 <sup>1</sup> / <sub>4</sub> "	5
3	21-042-002-001	Manual winch	1	16	33622	Split lock washer, carbon steel, medium zinc finish, <sup>3</sup> / <sub>8</sub> "	5
4	68015	External retaining ring, phosphate, <sup>3</sup> / <sub>4</sub> "	2	17	36106	Hex nut, gr. A, zinc plated, <sup>3</sup> / <sub>8</sub> "-16	5
5	33018	USS flat washer, zinc plated, <sup>3</sup> / <sub>4</sub> "	4	18	21-145-013	Specialty hardware, thimble	1
6	21-527-001	Pulley with bushing, subassembly	1	19	21-145-012	Specialty hardware, cable anchor	1
7	21-112-003	Pin, <sup>1</sup> / <sub>2</sub> " x 1 <sup>15</sup> / <sub>16</sub> " retaining clevis	1	20	21-145-014	Specialty hardware, <sup>3</sup> / <sub>16</sub> " cable	1
8	65107	Cotter pin, zinc finish, <sup>5</sup> / <sub>32</sub> " x 2"	1	21	16-132-011	4" x 2" mold-on rubber swiveling caster	4
9	16-132-009	PP-4/1.25-W	2	22	16-132-200	Wheel, PP-8/2-W, red	2
10	111113	Hex bolt, gr. A, plain finish, <sup>3</sup> / <sub>8</sub> "-16x2 <sup>1</sup> / <sub>2</sub> "	2	23	99-612-001	Pin, caster retainer, bolt and nut	4
11	37024	Nylon insert lock nut, gr. 2, zinc finish, <sup>3</sup> / <sub>8</sub> "-16	2	24	21-001-132	Floor lock assembly	1
12	21-112-002	Pin, roller	4	25	27402	RHSMS #8-32 x 1"	4
13	13-027-003	Roller guide	8	26	37012	#8-32 Nylock nut, zinc plated	4

### ALLW-2420-4SFL Exploded Parts Diagram & Bill of Materials

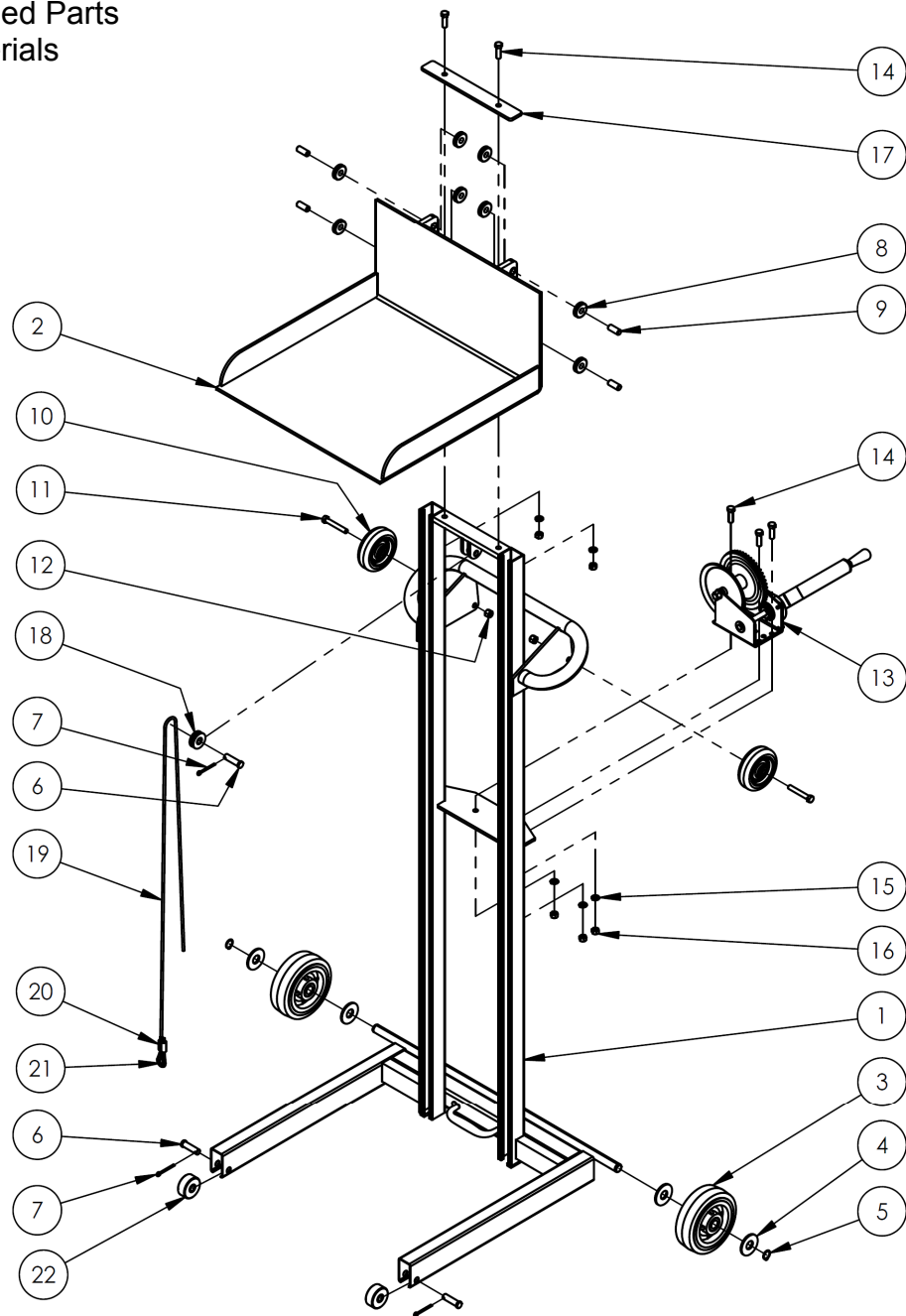


**NOTE:**  
Diagram includes floor lock bracket (circled); units not ordered with the floor lock option lack this bracket.

Item	Part no.	Description	Qty.	Item	Part no.	Description	Qty.
1	42-514-014	Weldment, frame	1	15	33622	Split lock washer, carbon steel, medium zinc finish, 3/8"	5
2	42-513-007	Weldment, deck	1	16	36106	Hex nut, gr. A, zinc plated, 3/8"-16	5
3	68015	External retaining ring, phosphate, 3/4"	2	17	21-145-013	Specialty hardware, thimble	1
4	33018	USS flat washer, zinc plated, 3/4"	4	18	21-145-012	Specialty hardware, cable anchor	1
5	21-527-001	Pulley with bushing subassembly	1	19	21-145-014	Specialty hardware, 3/16" cable	1
6	21-112-003	Pin, 1/2" x 1 15/16" retaining clevis	1	20	16-132-011	4" x 2" mold-on rubber, swiveling caster	4
7	65107	Cotter pin, zinc finish, 5/32" x 2"	1	21	16-132-200	Caster, PP-8/2/w, red	2
8	16-132-009	PP-4/1.25-W	2	22	13-025-004-002	Handle	1
9	11113	Hex bolt, gr. A, plain finish, 3/8"-16 x 2 1/2"	2	23	31802	Screw, self-tapping	2
10	37024	Nylon insert lock nut, gr. 2, zinc finish, 3/8" - 16	2	24	21-042-002-001	Manual winch, folding handle	1
11	21-112-002	Pin, roller	4	25	99-612-001	Pin, caster retainer, bolt and nut	4
12	21-027-003	Roller guide, stiffener, bar	8	26	21-001-132	Floor lock assembly	1
13	21-017-087	Stiffener, bar	1	27	27402	RHSMS #8-32 x 1"	4
14	11107	Hex bolt, gr. A, zinc finish, 3/8" - 16 x 1 1/4"	5	28	37012	#8-32 Nylock nut, zinc plated	4

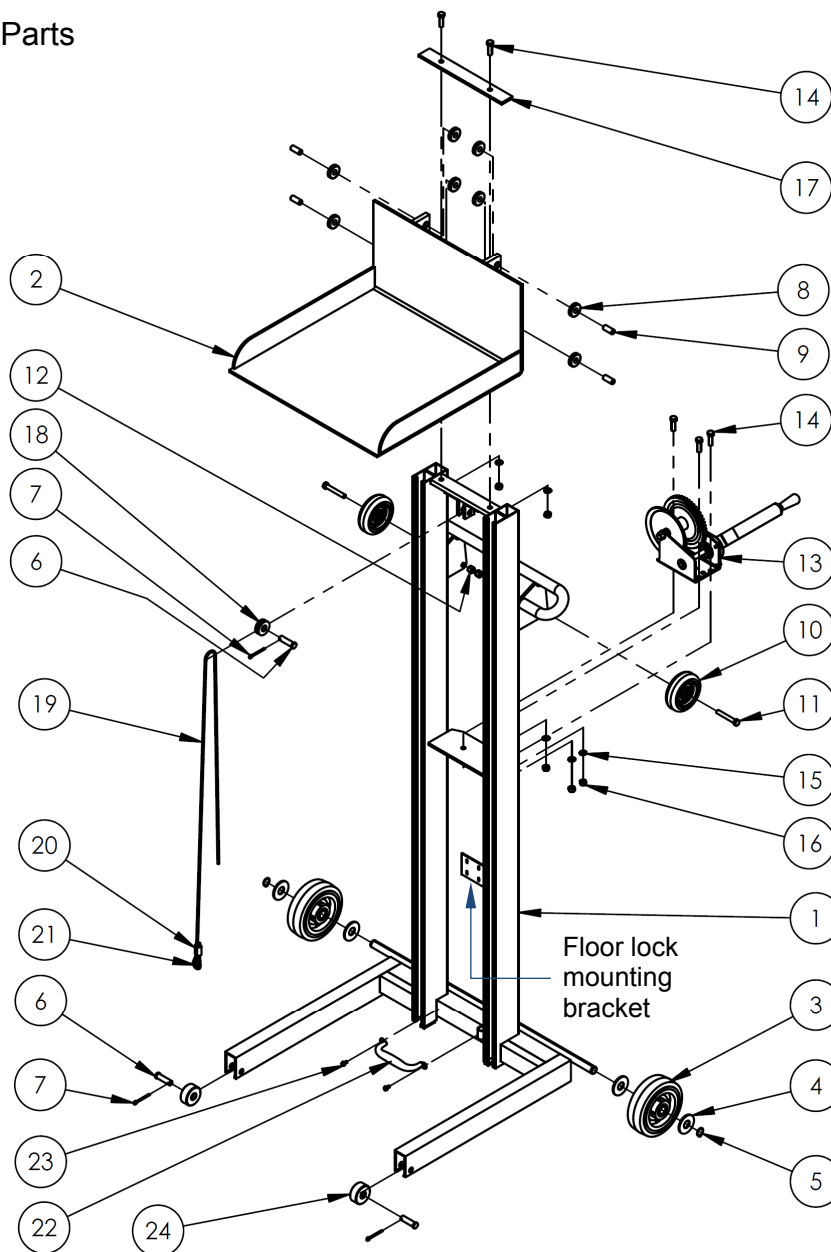


LLPW-500-FW Exploded Parts Diagram & Bill of Materials



Item	Part no.	Description	Qty.	Item	Part no.	Description	Qty.
1	33-514-056	Weldment, frame	1	12	37024	Nylon insert lock nut, gr. 2, zinc finish, $\frac{3}{8}$ "-16	2
2	33-513-032	Weldment, deck	1	13	21-042-002-001	Hand winch, foldable handle	1
3	16-132-058	Wheel, poly-on-poly	2	14	11107	Hex bolt, gr. A, zinc finish, $\frac{3}{8}$ "-16 x $1\frac{1}{4}$ "	5
4	33018	USS flat washer, zinc plated, $\frac{3}{4}$ "	4	15	33622	Split lock washer, carbon steel, medium zinc finish, $\frac{3}{8}$ "	5
5	68015	External retaining ring, phosphate, $\frac{3}{4}$ "	2	16	36106	Hex nut, gr. A, zinc plated, $\frac{3}{8}$ "-16	5
6	21-112-003	Pin, $\frac{1}{2}$ " x $1\frac{15}{16}$ " retaining clevis	3	17	21-017-016	Bar stiffener	1
7	65107	Cotter pin, zinc finish, $\frac{5}{32}$ " x 2"	3	18	21-527-001	Pelley with bushing subassembly	1
8	21-027-003	Roller, guide	8	19	21-145-014	Specialty hardware, $\frac{3}{16}$ " cable	1
9	21-112-002	Pin, roller	4	20	21-145-012	Specialty hardware, cable anchor	1
10	16-132-009	Caster, PP-4/1.25-W	2	21	21-145-013	Specialty hardware, thimble	1
11	11113	Hex bolt, gr. A, plain finish, $\frac{3}{8}$ "-16 x $2\frac{1}{2}$ "	2	22	21-527-002	Subassembly, roller with bushing	2

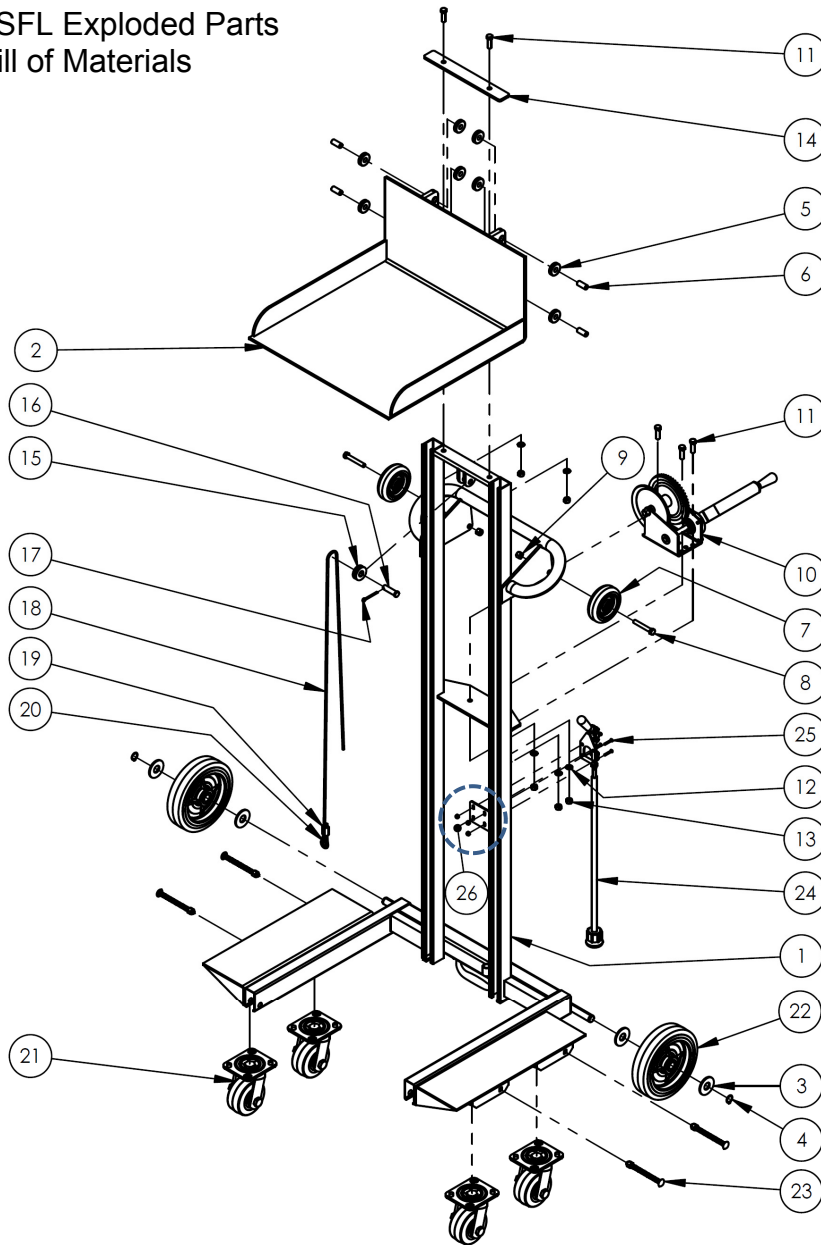
ALLPW-500-FW Exploded Parts Diagram & Bill of Materials



NOTE:  
Diagram includes floor lock bracket; units not ordered with the floor lock option lack this bracket.

Item	Part no.	Description	Qty.	Item	Part no.	Description	Qty.
1	42-514-016	Weldment, frame	1	13	21-042-002-001	Manual winch, foldable handle	1
2	21-513-038	Weldment, deck	1	14	11107	Hex bolt, gr. A. zinc finish, $\frac{3}{8}$ "-16 x $1\frac{1}{4}$ "	5
3	16-132-058	Wheel, poly-on-poly	2	15	33622	Split lock washer, carbon steel, medium zinc finish, $\frac{3}{8}$ "	5
4	33018	USS flat washer, zinc plated, $\frac{3}{4}$ "	4	16	36106	Hex nut, gr. A, zinc plated, $\frac{3}{8}$ "-16	5
5	68015	External retaining ring, phosphate, $\frac{3}{4}$ "	2	17	21-017-087	Stiffener, bar	1
6	21-112-003	Pin, $\frac{1}{2}$ " x $1\frac{15}{16}$ " retaining clevis	3	18	21-527-001	Pulley with bushing subassembly	1
7	65107	Cotter pin, zinc finish, $\frac{5}{32}$ " x 2"	3	19	21-145-014	Specialty hardware, $\frac{3}{16}$ " cable	1
8	21-027-003	Roller, guide	8	20	21-145-012	Specialty hardware, cable anchor	1
9	21-112-002	Pin, roller	4	21	21-145-013	Specialty hardware, thimble	1
10	16-132-009	Wheel, PP-4/1.25-W	2	22	13-025-004-002	Handle	1
11	11113	Hex bolt, gr. A, plain finish, $\frac{3}{8}$ "-16 x $2\frac{1}{2}$ "	2	23	31802	Screw, self-tapping	2
12	37024	Nylon insert lock nut, gr. 2, zinc finish, $\frac{3}{8}$ "-16	2	24	21-527-002	Subassembly, roller with bushing	2

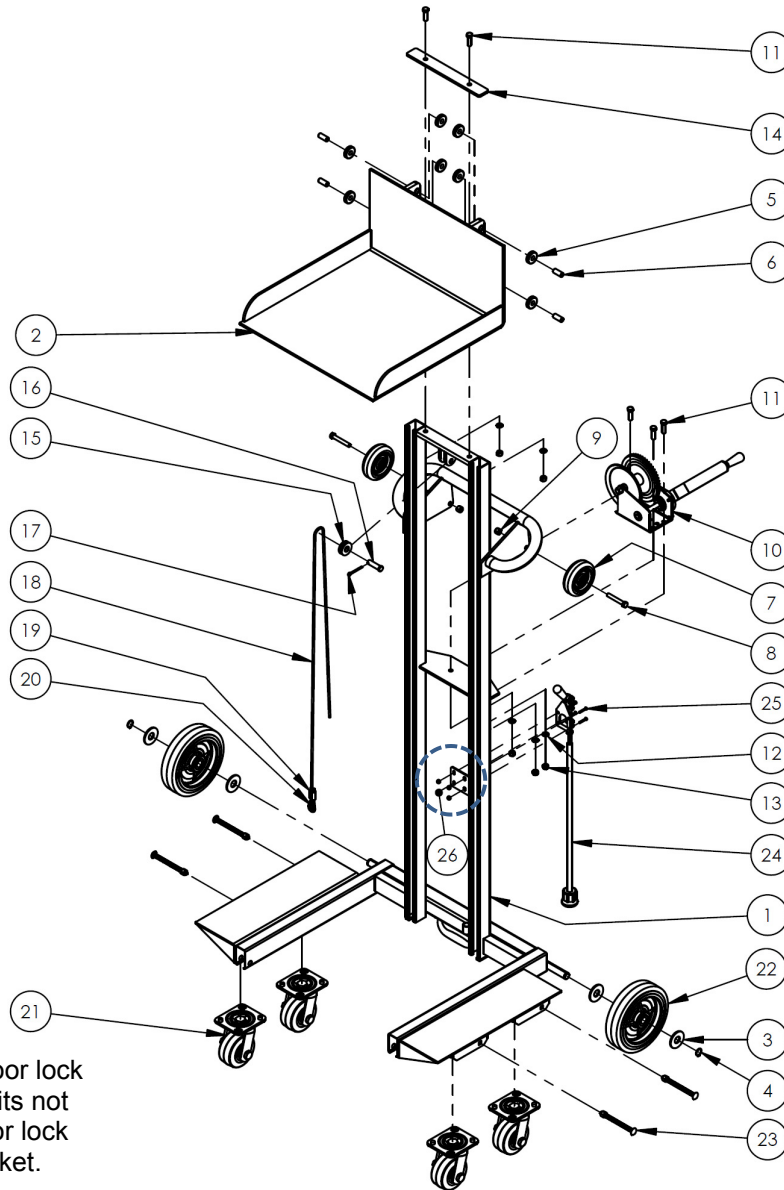
LLPW-500-4SFL Exploded Parts Diagram & Bill of Materials



**NOTES:**  
 1. Diagram includes floor lock bracket (circled); units not ordered with the floor lock option lack this bracket.  
 2. Item 23 is listed in the bill of materials as a carriage bolt and nut assembly. However, some units might use 0.374" x 4<sup>5</sup>/<sub>8</sub>" clevis pins (99-612-006) and cotter pins (65074).

Item	Part no.	Description	Qty.	Item	Part no.	Description	Qty.
1	42-514-006	Weldment, frame	1	14	21-017-016	Bar stiffener	1
2	33-513-032	Weldment, deck	1	15	21-527-001	Pulley with bush subassembly	1
3	33018	USS flat washer, zinc plated, 3/4"	4	16	21-112-003	Pin, 1/2" x 1 <sup>15</sup> / <sub>16</sub> " retaining clevis	1
4	68015	External retaining ring, phosphate, 3/4"	2	17	65107	Cotter pin, zinc finish, 5/32" x 2"	1
5	21-027-003	Roller, guide	8	18	21-145-014	Specialty hardware, 3/16" cable	1
6	21-112-002	Pin, roller	4	19	21-145-012	Specialty hardware, cable anchor	1
7	16-132-009	Wheel, PP-4/1.25-W	2	20	21-145-013	Specialty hardware, thimble	1
8	11113	Hex bolt, gr. A, plain finish, 3/8"-16 x 2 <sup>1</sup> / <sub>2</sub> "	2	21	16-132-011	4" x 2" mold-on rubber swivel caster	4
9	37024	Nylon insert lock nut, gr. 2, zinc finish, 3/8"-16	2	22	16-132-200	Wheel, PP-8/2-W, red	2
10	21-042-002-001	Manual winch, foldable handle	1	23	99-612-001	Pin, caster receiver, bolt and nut	4
11	11107	Hex bolt, gr. A, zinc finish, 3/8"-16 x 1 <sup>1</sup> / <sub>4</sub> "	5	24	21-001-132	Floor lock assembly	1
12	33622		5	25	27402	RHSMS #8-32 x 1"	4
13	36106		5	26	37012	#8-32 Nylock nut zinc plated	4

ALLPW-500-4SFL Exploded Parts Diagram & Bill of Materials



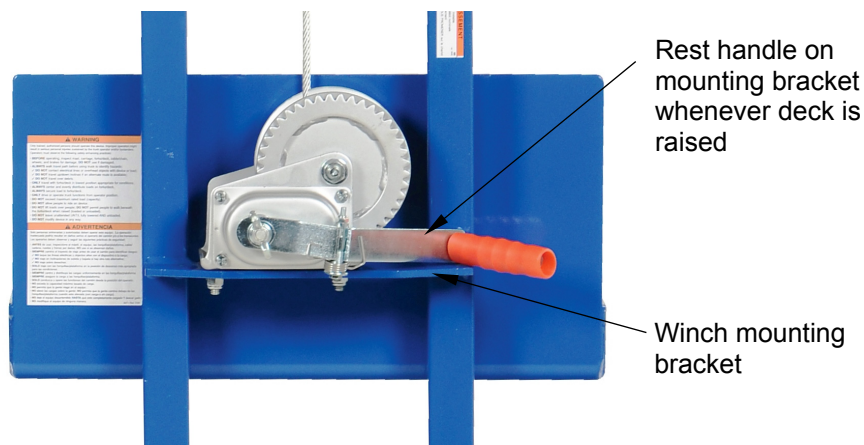
NOTE:  
Diagram includes floor lock bracket (circled); units not ordered with the floor lock option lack this bracket.

Item	Part no.	Description	Qty.	Item	Part no.	Description	Qty.
1	42-514-006	Weldment, frame	1	14	21-017-016	Bar, stiffener	1
2	33-513-032	Weldment, deck	1	15	21-527-001	Pulley with bushing subassembly	1
3	33018	USS flat washer, zinc plated, 3/4"	4	16	21-112-003	Pin, 1/2" x 1 15/16" retaining clevis	1
4	68015	External retaining ring, phosphate, 3/4"	2	17	65107	Cotter pin, zinc finish, 5/32" x 2"	1
5	21-027-003	Roller, guide	8	18	21-145-014	Specialty hardware, 3/16" aircraft cable	1
6	21-112-002	Pin, roller	4	19	21-145-012	Specialty hardware, cable anchor	1
7	16-132-009	Wheel, PP-4/1.25-W	2	20	21-145-013	Specialty hardware, thimble	1
8	11113	Hex bolt, gr. A, plain finish, 3/8"-16 x 2 1/2"	2	21	16-132-011	4" x 2" mold-on rubber swivel caster	4
9	37024	Nylon insert lock nut, gr. 2, zinc finish, 3/8"-16	2	22	16-132-200	Wheel, PP-8/2-W, red	2
10	21-042-002-001	Manual winch, foldable handle	1	23	99-612-001	Pin, caster receiver, bolt and nut	4
11	11107	Hex bolt, gr. A, zinc finish, 3/8"-16 x 1 1/4"	5	24	21-001-132	Floor lock assembly	1
12	33622	Split lock washer, carbon steel, medium zinc finish, 3/8"	5	25	27402	RHSMS #8-32 x 1"	4
13	36106		5	26	37012	#8-32 Nylock nut, zinc plated	4

## Raising and lowering the deck:

To raise and lower the deck, the lifter is equipped with a manual winch.

**Winch:** To raise the platform, rotate the handle clockwise. The platform rises ~1 inch with each rotation. To lower the platform, rotate the handle counterclockwise. Lay the handle on the winch mounting bracket as shown when the deck is elevated.



## Use Instructions:

This product is a “manually-propelled high lift industrial truck” according to the national standard ANSI/ITSDF B56.10-2012 (“B56.10”). Acquire a copy of B56.10, which is available at no cost through the ITSDF website ([www.itsdf.org](http://www.itsdf.org)), and review the operation recommendations. Instructions in this manual are meant to **supplement** those recommendations.

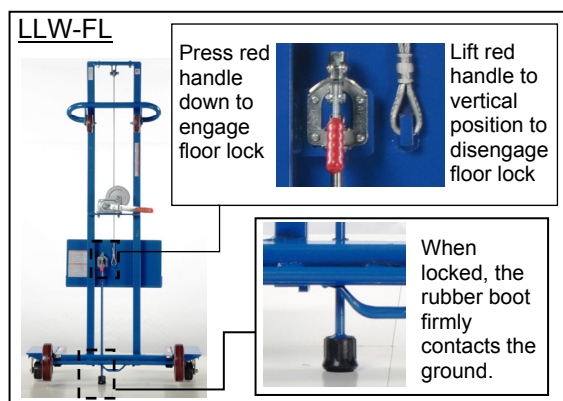
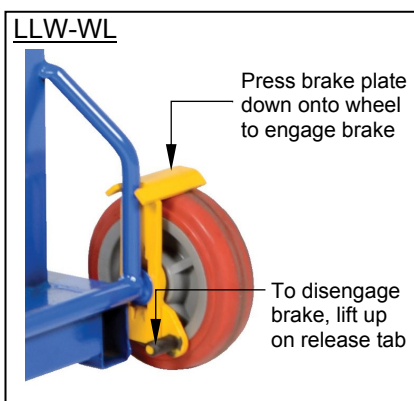
**ONLY** use this device after completing the training program outlined in B56.10, sections 4.17 and 4.18.1-4.

- Develop safe working habits and an awareness of hazardous conditions occurring or present during operation of the lifter.
- Inspect the area where the lifter will be used **before each use** to identify unusual operating conditions. Implement additional safety precautions as conditions require. Conditions might include:
  1. Irregularities in the floor/surface;
  2. Debris or other obstructions on the floor/surface;
  3. Unsound surfaces, i.e. surfaces that cannot support your weight plus the weight of the lifter and a full capacity load.
- Perform the following **function test before each use**:
  1. Raise and lower the deck and confirm normal operating condition of the lift mechanisms.
  2. Test the casters/wheels: wheels should roll smoothly, should not be severely worn, and should be rigidly fastened to the frame of the lifter.

Inspect the lifter as recommended in the “Inspections & Maintenance” section of this manual (p. 14-15). Use the lifter only if it is in normal operating condition.

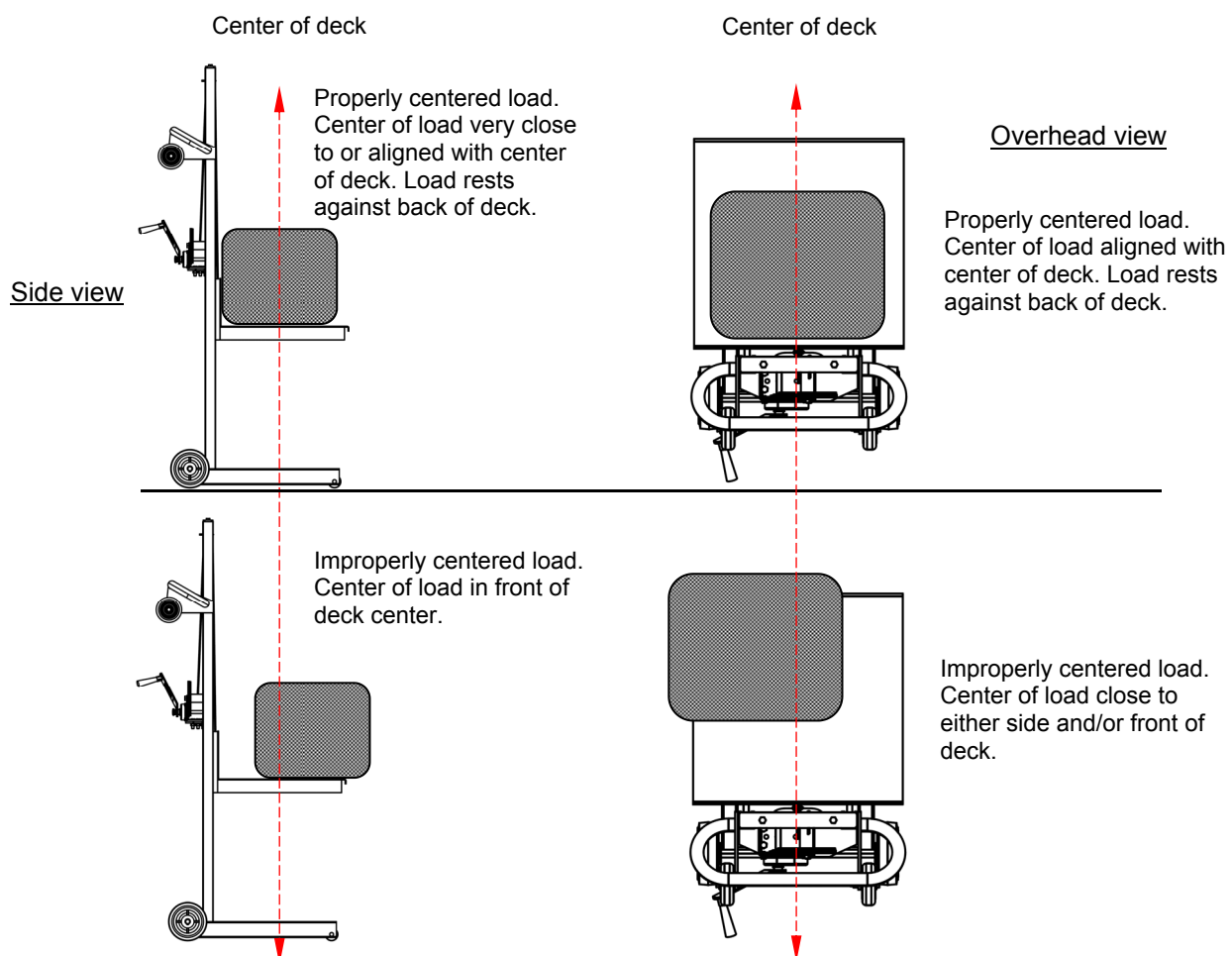
**Step 1:** Grasp the handle with both hands. Walk behind the lifter and keep your feet away from the wheels.

**Step 2:** Move the lifter to a position near the load. If the lifter is equipped with either a floor lock (option LLW-FL) or a wheel lock (option LLW-WL) engage the device to prevent the lifter from moving.



**Step 3:** Raise the deck to bring it to the level of the load. Turn the handle clockwise to elevate the deck. Turn the handle counterclockwise to lower the deck.

**Step 4:** Center the load on the deck. Secure it to the deck (with ratchet straps, for example) if necessary to prevent the load from sliding, rolling, etc.



**Step 5:** Lower the deck until it is just a few inches above the ground. Move the load to the desired location. After you arrive at the unloading destination:

- Lock the castors or set the brakes;
- Turn the handle clockwise until the load is positioned at a comfortable height;
- Rest the handle on the winch mounting bracket; and
- Remove the load.

**Step 6:** Lower the deck until it is a few inches above the legs and return the lifter to its storage location. Engage the brakes (if equipped with optional brakes) and lower the deck completely. Store the lifter in a dry, indoor location.

## Inspections & Maintenance:

Regular inspections and maintenance are necessary to keep the device in normal condition.

- Periodically lubricate moving parts.
- Keep the product clean and dry.
- Only use manufacturer- approved replacement parts.

Before using the lifter for the first time, create a written record that describes its appearance and functions. Include detailed descriptions about the frame, casters, wheels, deck, deck rollers, and the lifting mechanisms (winch pulleys). Raise and lower the deck. Include observations about how the deck moves and sounds as it travels up and down the mast. Describe the operation of the winch/foot pump. This written record establishes "normal condition". When

conducting future inspections, compare those observations with the record to determine if a component requires repair or replacement.

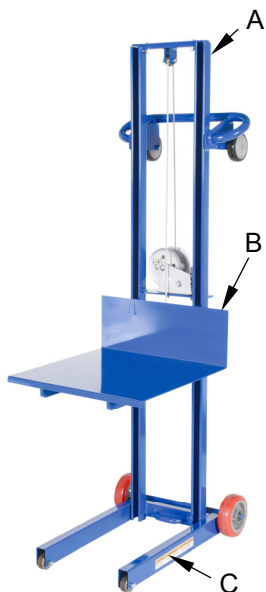
**At least once every 2 weeks, visually inspect the following components:**

1. Winch, winch mounting bracket (see "Raising and lowering the deck", p. 13), cable, and pulley: Cycle the deck up and down. Listen for unusual noises and watch for binding or rough movement as the deck moves. Examine the winch. Make sure that the spool is intact and rotates smoothly when the handle is turned. Inspect the mounting bracket. The winch should be solidly attached to the bracket. Tighten all loose fasteners. Lower the deck and examine the cable for reeving, stretching, thinning portions, etc. Confirm that the pulley rotates freely and is securely fastened to the mast.
2. Frame (mast, base, deck, and deck rollers): examine the frame members for damaged welds, severe rusting, cracks, bends, etc. Remove rust with steel wool. Clean the affected areas and apply touch-up paint.
3. Casters and wheels: check each caster and wheel for wobbling, damage, and severe wear. Wheels and casters should roll smoothly. Clean the casters to remove grit from the surfaces, if necessary.
4. Hardware: examine the pins, bolts, nuts, etc. Tighten loose fasteners.
5. Floor lock: if your unit is equipped with the floor lock option confirm that it makes solid contact with the ground when applied. Check the condition of the rubber pad. Replace the pad if wear or damage affects its function.

**Maintenance:** Implement a maintenance program to ensure that the lifter functions properly. Page 9 of ANSI/ITSDF standard B56.10-2006, "Manually propelled high lift industrial trucks", describes recommended maintenance procedures. A copy of the standard is downloadable for free from the ITSDF website (see [www.itsdf.org](http://www.itsdf.org)). Apply those recommendations in conjunction with the following steps.

1. Tag the lifter, "Out of Service."
2. Inspect the lifter as described above. If deformity, corrosion, rusting, or excessive wear of structural members is present, DO NOT use the lifter. If the deck does not move smoothly or makes noise as it moves up or down the upright, apply a silicon wax or silicon spray to the inside of the mast frame.
3. Remove any dirt or other matter from the cable and pulleys and other lifter surfaces.
4. Perform all other necessary adjustments and/or repairs. DO NOT modify the lifter.
5. Make a dated record of the repairs, adjustments and/or replacements made.
6. Platform, mast and platform rollers: cycle the platform up and down while listening for unusual noises and watching for binding or rough movement.

**Labeling diagram:** The lifter should always be labeled as shown below. Contact Vestil to order replacement labels.



**A: Label 287 (on back side of mast)**

MODEL/MODÉLO/MODÈLE _____
STATIC CAPACITY (evenly distributed) _____ lbs.
LA CAPACIDAD CONSTANTE (distribuida uniformemente) _____ kgs.
CAPACITÉ STATIQUE (distribuée régulièrement) _____ kgs.
SERIAL/SERIE/SÉRIE _____
287 REV 0812

**C: Label 208 (on both legs)**

<b>▲ WARNING</b>	<b>▲ ADVERTENCIA</b>	<b>▲ AVERTISSEMENT</b>
KEEP CLEAR OF PINCH POINT	MANTENGASE ALEJADO DEL PUNTO DE CORTE	SE TENIR À DISTANCE DU POINT DE PINCEMENT

**B: Label 527 (on back side of mast)**

<b>▲ WARNING</b>
<p>Only trained, authorized persons should operate this device. Improper operation might result in serious personal injuries sustained by the truck operator and/or bystanders. Operators must observe the following safety-enhancing practices:</p> <ul style="list-style-type: none"> <li>• <b>BEFORE</b> operating, inspect mast, carriage, forks/deck, cable/chain, wheels, and brakes for damage. <b>DO NOT</b> use if damaged.</li> <li>• <b>ALWAYS</b> walk travel path before using truck to identify hazards:             <ul style="list-style-type: none"> <li>➢ <b>DO NOT</b> contact electrical lines or overhead objects with device or load;</li> <li>➢ <b>DO NOT</b> travel up/down inclines if an alternate route is available;</li> <li>➢ <b>DO NOT</b> travel over debris.</li> </ul> </li> <li>• <b>ONLY</b> travel with forks/deck in lowest position appropriate for conditions.</li> <li>• <b>ALWAYS</b> center and evenly distribute loads on forks/deck.</li> <li>• <b>ALWAYS</b> secure load to forks/deck.</li> <li>• <b>ONLY</b> drive or operate truck functions from operator position.</li> <li>• <b>DO NOT</b> exceed maximum rated load (capacity).</li> <li>• <b>DO NOT</b> allow people to ride on device.</li> <li>• <b>DO NOT</b> lift loads over people; <b>DO NOT</b> permit people to walk beneath the forks/deck when raised (loaded or unloaded).</li> <li>• <b>DO NOT</b> leave unattended UNTIL fully lowered AND unloaded.</li> <li>• <b>DO NOT</b> modify device in any way.</li> </ul>
<b>▲ ADVERTENCIA</b>
<p>Solo personas entrenadas y autorizadas deben operar este equipo. La operación inadecuada podría resultar en daños serios al operario del camión y/o a los transeúntes. Los operadores deben observar y seguir las siguientes prácticas de seguridad:</p> <ul style="list-style-type: none"> <li>• <b>ANTES</b> de usar, inspeccione el mástil, el equipo, las horquillas/plataforma, cable/cadena, ruedas y frenos por daños. <b>NO</b> use si se observan daños.</li> <li>• <b>SIEMPRE</b> camine el trayecto de viaje antes de usar el camión para identificar riesgos:             <ul style="list-style-type: none"> <li>➢ <b>NO</b> toque las líneas eléctricas u objetos altos con el dispositivo o la carga;</li> <li>➢ <b>NO</b> viaje en inclinaciones de subida y bajada si hay otra ruta alternativa.</li> <li>➢ <b>NO</b> viaje sobre desechos.</li> </ul> </li> <li>• <b>SOLO</b> viaje con las horquillas/plataforma en la posición de descenso más apropiada para las condiciones.</li> <li>• <b>SIEMPRE</b> centre y distribuya las cargas uniformemente en las horquillas/plataforma.</li> <li>• <b>SIEMPRE</b> asegure la carga a las horquillas/plataforma.</li> <li>• <b>SOLO</b> conduzca u opere las funciones del camión desde la posición del operario.</li> <li>• <b>NO</b> exceda la capacidad máxima tasada de carga.</li> <li>• <b>NO</b> permita que la gente viaje en el equipo.</li> <li>• <b>NO</b> eleve las cargas sobre la gente. <b>NO</b> permita que la gente camine debajo de las horquillas/plataforma cuando este elevado (con carga o sin carga).</li> <li>• <b>NO</b> deje el equipo desatendido <b>HASTA</b> que este completamente cargado y descargado.</li> <li>• <b>NO</b> modifique el equipo de ninguna manera.</li> </ul>

## LIMITED WARRANTY

Vestil Manufacturing Corporation (“Vestil”) warrants this product to be free of defects in material and workmanship during the warranty period. *Our warranty obligation is to provide a replacement for a defective original part if the part is covered by the warranty, after we receive a proper request from the warrantee (you) for warranty service.*

### Who may request service?

Only a warrantee may request service. *You are a warrantee if* you purchased the product from Vestil or from an authorized distributor AND Vestil has been fully paid.

### What is an “original part”?

An original part is a part used to make the product as shipped to the warrantee.

### What is a “proper request”?

A request for warranty service is proper if Vestil receives: 1) a photocopy of the Customer Invoice that displays the shipping date; AND 2) a written request for warranty service including your name and phone number. Send requests by any of the following methods:

<u>Mail</u>	<u>Fax</u>	<u>Email</u>
Vestil Manufacturing Corporation 2999 North Wayne Street, PO Box 507 Angola, IN 46703	(260) 665-1339 <u>Phone</u> (260) 665-7586	sales@vestil.com

In the written request, list the parts believed to be defective and include the address where replacements should be delivered.

### What is covered under the warranty?

After Vestil receives your request for warranty service, an authorized representative will contact you to determine whether your claim is covered by the warranty. Before providing warranty service, Vestil may require you to send the entire product, or just the defective part or parts, to its facility in Angola, IN. The warranty covers defects in the following *original* dynamic components: motors, hydraulic pumps, electronic controllers, switches and cylinders. It also covers defects in *original* parts that wear under normal usage conditions (“wearing parts”), such as bearings, hoses, wheels, seals, brushes, and batteries.

### How long is the warranty period?

The warranty period for original dynamic components is 90 days. For wearing parts, the warranty period is 90 days. The warranty periods begin on the date when Vestil ships the product to the warrantee. If the product was purchased from an authorized distributor, the periods begin when the distributor ships the product. Vestil may, at its sole discretion, extend the warranty periods for products shipped from authorized distributors by *up to* 30 days to account for shipping time.

### If a defective part is covered by the warranty, what will Vestil do to correct the problem?

Vestil will provide an appropriate replacement for any *covered* part. An authorized representative of Vestil will contact you to discuss your claim.

### What is not covered by the warranty?

1. Labor;
2. Freight;
3. Occurrence of any of the following, which automatically voids the warranty:
  - Product misuse;
  - Negligent operation or repair;
  - Corrosion or use in corrosive environments;
  - Inadequate or improper maintenance;
  - Damage sustained during shipping;
  - Collisions or other incidental contacts causing damage to the product;
  - Unauthorized modifications: DO NOT modify the product IN ANY WAY without first receiving written authorization from Vestil. Modification(s) might make the product unsafe to use or might cause excessive and/or abnormal wear.

### Do any other warranties apply to the product?

Vestil Manufacturing Corp. makes no other express warranties. All implied warranties are disclaimed to the extent allowed by law. Any implied warranty not disclaimed is limited in scope to the terms of this Limited Warranty.

