



**VESTIL MANUFACTURING CORP.**  
 2999 North Wayne Street, P.O. Box 507, Angola, IN 46703  
 Telephone: (260) 665-7586 -or- Toll Free (800) 348-0868  
 Fax: (260) 665-1339  
 www.vestilmfg.com e-mail: [info@vestil.com](mailto:info@vestil.com)

## DRUM-LUG Drum Lifter Instruction Manual



### Receiving instructions:

After delivery, remove the packaging from the product. Inspect the product to determine whether it sustained damage during transport. If damage is found, record a complete description of it on the bill of lading. If the product is undamaged, discard the packaging.

### NOTE:

The end-user is solely responsible for confirming that product design, installation, use, and maintenance comply with laws, regulations, codes, and mandatory standards applied where the product is used.

### Table of Contents

Signal words.....	2
Hazards of Improper Use.....	2
Labeling diagram.....	2
Exploded parts view and bill of materials.....	3
Specifications.....	3
Using the lifter.....	4
Inspections & Maintenance.....	4
Limited warranty.....	5

### Signal Words:

This manual uses SIGNAL WORDS to draw attention to uses of the product that could result in personal injuries, as well as the probable seriousness of those injuries. "NOTICE" alerts the reader to uses likely to result in property damage. Signal words used in this manual appear below along with the definition of each word.



Identifies a hazardous situation which, if not avoided, WILL result in DEATH or SERIOUS INJURY. Use of this signal word is limited to the most extreme situations.



Identifies a hazardous situation which, if not avoided, COULD result in DEATH or SERIOUS INJURY.



Indicates a hazardous situation which, if not avoided, COULD result in MINOR or MODERATE injury.



Identifies practices likely to result in product/property damage, such as operation that might damage the product.

### Hazards of Improper Use:

Vestil strives to identify every foreseeable hazard associated with the use of this product. However, no manual can address all possible risks. Ultimately, avoiding requires applying good judgment whenever using this device.

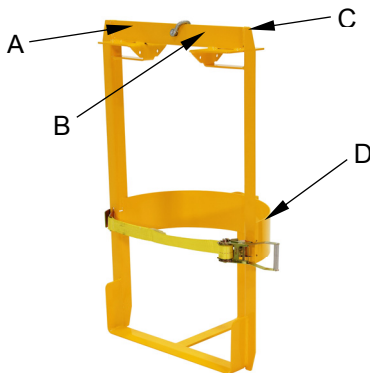


Using this lifter improperly could result in death or serious personal injury.

- ALWAYS inspect the unit before each use as described in "Inspections & Maintenance" on p. 4.
- When used with a hoist, only attach the lifter to a hoist hook with a spring latch in good condition.
- When mounted to a fork lift, attach the safety strap to the fork carriage without slack.
- DO NOT remove or obscure any label. Confirm the placement and legibility of each label shown below in the "Labeling diagram". If a label is damaged or unreadable, contact Vestil for a replacement. DO NOT use the lifter until the label is replaced.
- The lifter is designed to move open and closed head, 30GAL and 55GAL drums in non-classified locations. ONLY use this device to lift drums in good condition. DO NOT lift open head drums unless lids are securely fastened.
- The strap is an essential safety-enhancing feature. Wrap the strap around the forklift carriage and fasten the free end to the strap or quick link **with no slack**.
- DO NOT use the lifter to move drums filled with hazardous substances.
- DO NOT lift a drum lying on its side. All drums must be upright before attaching the lifter to them.
- DO NOT stand, sit, or ride on the lifter.
- DO NOT attempt to lift a drum that weighs more than the capacity of the lifter (1,000 lb.; 454.5 kg).
- DO NOT lift a load higher than necessary. (See "Using the lifter" on p. 4).
- DO NOT raise the load over your feet or any other body part. NEVER lift a drum over yourself or other people.
- Avoid contact with the load while moving it. When moving the drum by hoist, stand behind the lifter, grasp the handle welded to the back of the drum cradle, and guide the drum to the desired location. Watch the load at all times.
- DO NOT leave a suspended drum unattended. Always lower the lifter until it rests on the ground.
- DO NOT open the lifter while a drum is suspended. Lower the drum completely before releasing it.

### Labeling diagram:

The lifter should always be labeled as shown in the diagram. Replace any label that is missing, damaged, or not easily readable (faded, for example).



A: label 675

⚠ WARNING	⚠ ADVERTENCIA
<ul style="list-style-type: none"> <li>• DO NOT exceed rated capacity</li> <li>• DO NOT use if damaged, malfunctioning, or missing parts</li> <li>• DO NOT lift people OR lift loads over people</li> <li>• DO NOT raise load higher than necessary</li> <li>• DO NOT leave a suspended load unattended</li> <li>• DO NOT use lifter unless you read and understand the owner's manual</li> <li>• DO NOT alter OR modify lifter</li> <li>• DO NOT remove OR obscure any label</li> <li>• STAY CLEAR of suspended loads</li> <li>• Secure load before using this device</li> </ul>	<ul style="list-style-type: none"> <li>• NO exceda la capacidad tasada</li> <li>• NO USE si las partes estan dañadas, no funcionan correctamente o faltan partes.</li> <li>• NO eleve al personal o eleve cargas sobre el personal</li> <li>• NO eleve la carga mas alto de lo necesario</li> <li>• NO deje desatendida una carga que este suspendida</li> <li>• NO use el elevador a no ser que haya leído y entendido las instrucciones del manual del propietario</li> <li>• NO altere o modifique el elevador</li> <li>• NO quite u oscurezca ninguna etiqueta</li> <li>• MANTENGASE alejado de las cargas suspendidas</li> <li>• Asegure la carga antes de usar este dispositivo</li> </ul>

B: label 320

MODEL NUMBER/NUMERO MODELO _____
RATED LOAD _____ LBS.
CARGA TASADA _____ KGS.
WEIGHT OF LIFTER _____ LBS.
PESO DE LA UNIDAD _____ KGS.
SERIAL NUMBER/NUMERO DE SERIE: _____
BTH-1 Design Category/Diseño BTH-1 Categoría: <u>B</u>
BTH-1 Service Category/Servicio BTH-1 Categoría: <u>I</u>

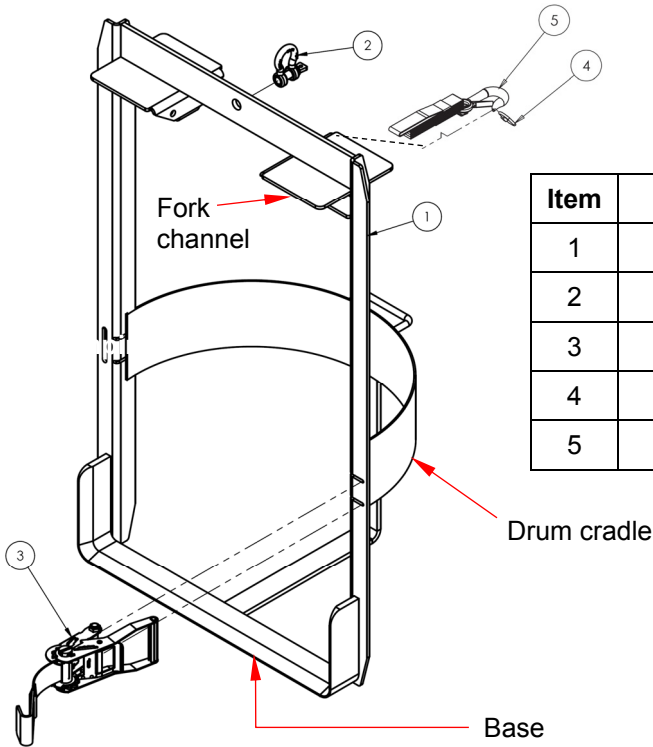
C: label 218

⚠ WARNING	⚠ ADVERTENCIAS
<p>Improper use might result in death or serious personal injury. Attach device to fork carriage with safety chain/strap.</p> <ul style="list-style-type: none"> <li>• Drive lift truck forward until forks contact ends of fork pockets.</li> <li>• Chain/straps must not be able to disconnect (slide free) from carriage.</li> <li>• Safety chain/strap must be taut. Connect chain/strap to carriage via shortest line.</li> </ul>	<p>El uso impropio puede resultar en muerte o heridas personales. Atar aparato al mástil del montacargas con cadenas/correas.</p> <ul style="list-style-type: none"> <li>• Maneje el montacargas para adelante hasta que las cuñas hagan contacto con la orilla del bolsillo de las cuñas.</li> <li>• La cadenas y correas no deben de deslizarse (saltarse) del mástil del montacargas.</li> <li>• La cadena/correa de seguridad debe de estar apretado. Asegure la cadena/correa al mástil via la ruta mas corta.</li> </ul>

D: label 624

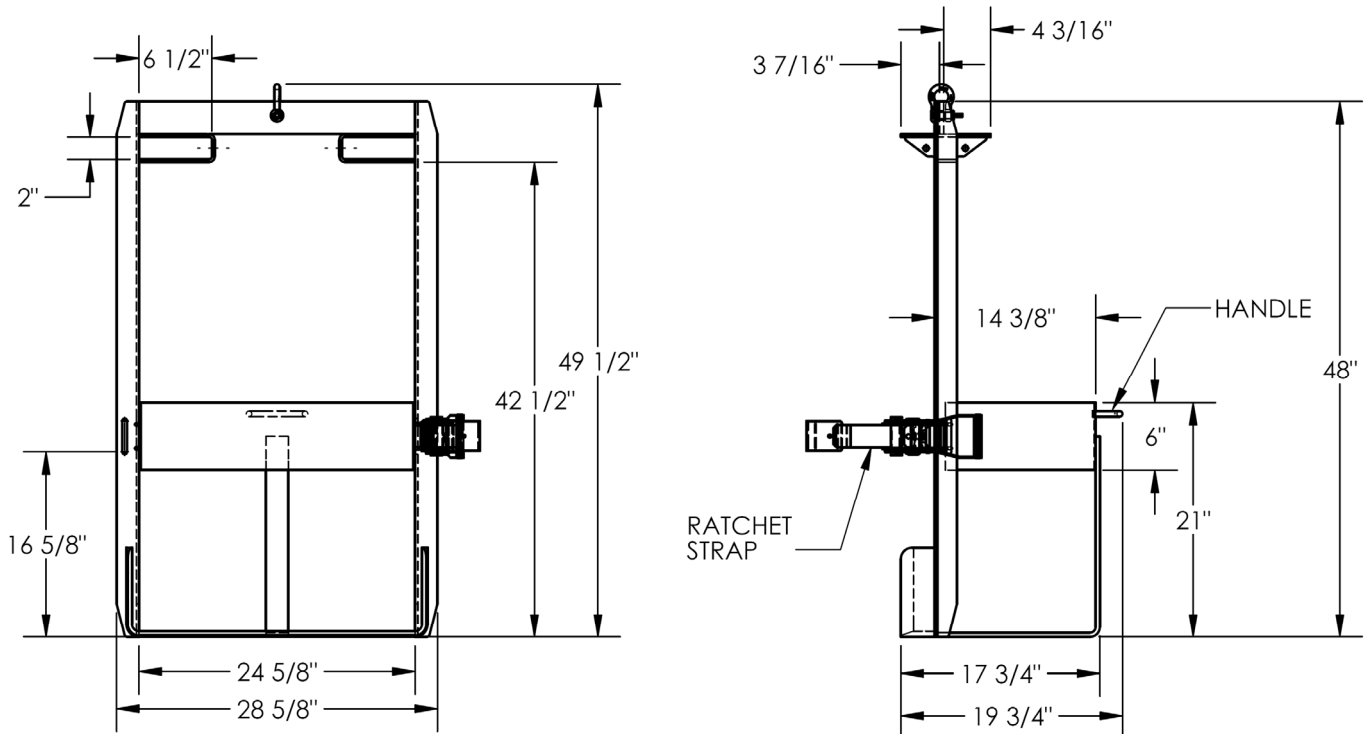
⚠ WARNING	⚠ ADVERTENCIA	⚠ AVERTISSEMENT
<p>CENTER LIFTING HOOK ABOVE LOAD CENTER OR LOAD DUMPING MAY OCCUR. ADJUST LOCATION OF LOAD OR LIFTING HOOK, IF ADJUSTABLE.</p> <p>DO NOT EXCEED RATED CAPACITY.</p> <p>HOIST CAPACITY MUST EQUAL OR EXCEED LIFTER CAPACITY PLUS WEIGHT OF UNIT.</p> <p>LIFT SLOWLY.</p> <p>STAND CLEAR WHILE LIFTING.</p>	<p>CENTRE EL GANCHO DE ELEVACION ENCIMA DEL CENTRO DE LA CARGA O LA CARGA SE PODRIA DESCARGAR. AJUSTE EL LUGAR DE LA CARGA O DEL GANCHO DE ELEVACION, SI ES ADJUSTABLE.</p> <p>NO EXCEDA LA CAPACIDAD TASADA.</p> <p>LA CAPACIDAD DEL TORNO DEBE IGUALAR O DEBE EXCEDER LA CAPACIDAD DE ALZADOR EL PESO POSITIVO DE LA UNIDAD.</p> <p>ELEVE LENTAMENTE.</p> <p>MANTENGASE APARTADO MIENTRAS SE ELEVE.</p>	<p>CENTREZ LE CROCHET DE LEVAGE AU-DESSUS DU CENTRE DE LA CHARGE OU UN RENVERSE DE LA CHARGE RISQUERAIT AJUSTER LA POSITION DE LA CHARGE OU DU CROCHET DE LEVAGE, S'IL EST POSSIBLE.</p> <p>NE PAS DEPASSER LA CAPACITE NOMINALE.</p> <p>CAPACITE DE L'APPAREIL DE LEVAGE DOIT EGALER OU DEPASSER LA CAPACITE DE L'ELEVATEUR AVEC LE POIDS DE L'UNITE.</p> <p>LEVER LENTEMENT.</p> <p>TENEZ-VOUS A L'ECART PENDANT LEVAGE.</p>

Exploded parts view and bill of materials



Item	Part no.	Description	Qty.
1	09-514-146	Weldment, frame	1
2	08-145-010	1/2" 2-ton shackle	1
3	30-001-246	Ratchet strap, dual	1
4	45212	Quick link, zinc finish, 3/16"	1
5	08-145-028	Fork attachment restraint strap	1

Specifications:



**\*\*Only use with 30 gallon and 55 gallon, open and closed head, steel drums in upright position.\*\***

Capacity	= 1,000 lb.	Compatible with 55gal. and 30gal. steel, plastic, & fiber drums
Overall width	= 28 <sup>5</sup> / <sub>8</sub> "	Maximum drum width = 24 <sup>5</sup> / <sub>8</sub> "
Overall length	= 19 <sup>3</sup> / <sub>4</sub> "	Can be attached to a hoist on mounted on forklift
Overall height	= 49 <sup>1</sup> / <sub>2</sub> "	Usable fork channel dimensions = 6 <sup>1</sup> / <sub>2</sub> " x 2"
Ratchet strap to secure drum in lifter		

## Using the lifter:

This product can be used either as a below-the-hook lifting device (attached to a hoist) or as a forklift attachment.

**Step 1:** Set the lifter next to the drum. The base should contact the side of the drum.

**Step 2:** Tip the drum slightly away from the lifter. Slide the base of the lifter under the drum. The side of the drum should contact the back of the drum cradle.

**Step 3:** Apply the ratchet strap. If the strap is not long enough to wrap around the drum, then release the spooling mechanism. Pull the release lever up and hold it. Pull the strap away from the ratchet to unspool strap and increase its length.

**Step 4:** Feed the hook at the end of the strap into the hook slot in the frame. Move the ratchet handle back-and-forth to tighten the strap against the drum. Do not overtighten the strap, particularly when a drum is plastic or fiber. Overtightening the strap might damage (crack or rupture) the drum.

**Step 5:** Connect the lifter to a hoist or mount it on the forks of your lift truck.

a. Hoist: attach the hoist hook to the shackle. Do not side load the hoist! Side loading the hoist will result in load swing as the lifter lifts off of the ground.

b. Forklift: drive the forks through both fork channels. Drive forward until the forks wedge against the tops and bottoms of the channels.

c. Attach the safety strap to the fork carriage. Wrap the strap around the carriage. Fasten the hook to the strap or quick link (see exploded view on p. 3) **without slack**. The strap must not be able to disconnect from the carriage during use.

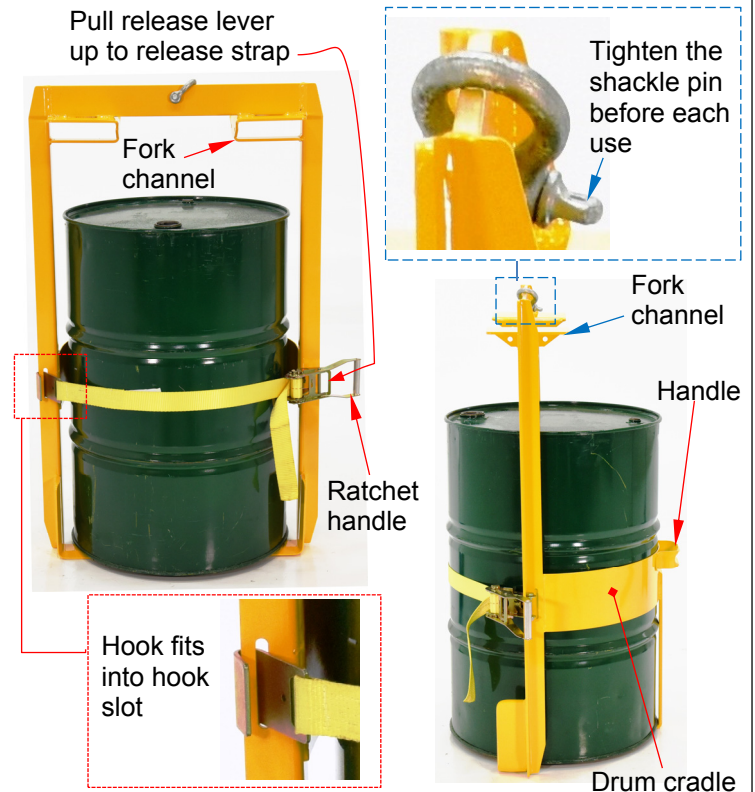
**Step 6:** Raise the drum a few inches above the ground. Watch the drum and lifter for approximately 5 seconds to be certain that the drum is secure. If the strap must be tightened, lower the lifter to the ground and then tighten the strap.

**Step 7:** Transport the drum to the desired location.

a. **Overhead hoist:** Lift the drum ~5-6 inches above the ground. Stand behind the drum. Grasp the handle welded to the back of the cradle. Carefully direct the lifter to the desired location.. Minimize drum swing by moving the hoist **slowly**.

b. **Forklift:** drive slowly, particularly while turning. Reduce speed during all turns. Apply the brakes gradually. The lifter should not slide towards the tip of the forks

**Step 8:** Before lowering the drum, make sure that it is not swinging, spinning, etc. Slowly lower the drum until there is slack in the hoist cable/chain or the forks are loose inside the fork channels. Disconnect the lifter from the hoist, or demount the lifter from the forklift. Loosen the ratchet strap by pulling up on the release lever. Pull as much strap off of the spool as necessary to unhook the strap from the frame.



## Inspections & Maintenance:

Before using the lifter for the first time, make a written record of its appearance. Include observations about shackle hardware, ratchet strap mechanism, the frame, handle, and fork channels (see diagrams in "Using the lifter"). Describe how much force is required to work the ratchet mechanism. Photograph each label and add the photographs to the record. This record establishes "normal condition". During future inspections, compare your observations to the record to determine if the unit is in normal condition. **DO NOT** use the lifter unless it is in normal condition.

Examine the following elements **before each use**.

1. Shackles and shackle pin: Check for cracks, warps, and severe wear.
2. Ratchet and ratchet strap: Confirm that the ratchet works properly by moving the handle back-and-forth. The release lever should automatically engage the teeth on the spool to prevent the strap from unwinding. Pull the release lever and unwind most of the strap. Check the strap for damage, such as cuts, tears, burns.
3. Frame, cradle, fork channels: Check welds and frame for breaks and severe rusting/corrosion. Remove rust/corrosion with a brush or steel wool. Clean the area and apply touchup paint. The frame should be square and rigid. Examine the frame around the hook slot and hole for the shackle pin for elongations, warps, etc.
4. Make a dated record of the inspection. Indicate whether each component inspected is in normal condition. Describe repairs, adjustments and/or replacements. Only install manufacturer-approved replacement parts.



## LIMITED WARRANTY

Vestil Manufacturing Corporation ("Vestil") warrants this product to be free of defects in material and workmanship during the warranty period. *Our warranty obligation is to provide a replacement for a defective original part if the part is covered by the warranty, after we receive a proper request from the warrantee (you) for warranty service.*

### Who may request service?

Only a warrantee may request service. *You are a warrantee if* you purchased the product from Vestil or from an authorized distributor AND Vestil has been fully paid.

### What is an "original part"?

An original part is a part used to make the product as shipped to the warrantee.

### What is a "proper request"?

A request for warranty service is proper if Vestil receives: 1) a photocopy of the Customer Invoice that displays the shipping date; AND 2) a written request for warranty service including your name and phone number. Send requests by any of the following methods:

<u>Mail</u>	<u>Fax</u>	<u>Email</u>
Vestil Manufacturing Corporation 2999 North Wayne Street, PO Box 507 Angola, IN 46703	(260) 665-1339 <u>Phone</u> (260) 665-7586	info@vestil.com

In the written request, list the parts believed to be defective and include the address where replacements should be delivered.

### What is covered under the warranty?

After Vestil receives your request for warranty service, an authorized representative will contact you to determine whether your claim is covered by the warranty. Before providing warranty service, Vestil may require you to send the entire product, or just the defective part or parts, to its facility in Angola, IN. The warranty covers defects in the following original dynamic components: motors, hydraulic pumps, electronic controllers, switches and cylinders. It also covers defects in original parts that wear under normal usage conditions ("wearing parts"), such as bearings, hoses, wheels, seals, brushes, and batteries.

### How long is the warranty period?

The warranty period for original dynamic components is 90 days. For wearing parts, the warranty period is 90 days. The warranty periods begin on the date when Vestil ships the product to the warrantee. If the product was purchased from an authorized distributor, the periods begin when the distributor ships the product. Vestil may, at its sole discretion, extend the warranty periods for products shipped from authorized distributors by up to 30 days to account for shipping time.

### If a defective part is covered by the warranty, what will Vestil do to correct the problem?

Vestil will provide an appropriate replacement for any covered part. An authorized representative of Vestil will contact you to discuss your claim.

### What is not covered by the warranty?

1. Labor;
2. Freight;
3. Occurrence of any of the following, which automatically voids the warranty:
  - Product misuse;
  - Negligent operation or repair;
  - Corrosion or use in corrosive conditions;
  - Inadequate or improper maintenance;
  - Damage sustained during shipping;
  - Accidents involving the product;
  - Unauthorized modifications: DO NOT modify the product IN ANY WAY without first receiving written authorization from Vestil. Modification(s) might make the product unsafe to use or might cause excessive and/or abnormal wear.

### Do any other warranties apply to the product?

Vestil Manufacturing Corp. makes no other express warranties. All implied warranties are disclaimed to the extent allowed by law. Any implied warranty not disclaimed is limited in scope to the terms of this Limited Warranty.