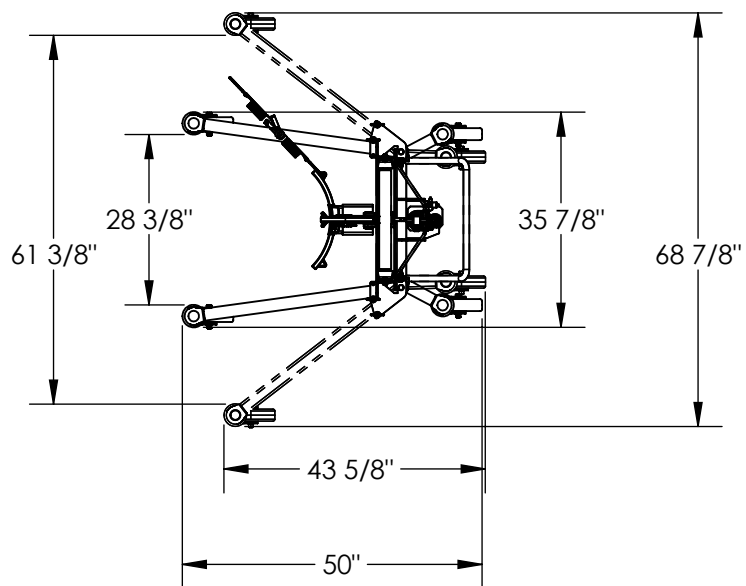


# ECONOMICAL DRUM TRANSPORT - DCR-880-H-HP

APPROX WEIGHT: 300.99 lbs.  
 DOES NOT INCLUDE WEIGHT OF POWER OR PACKAGING!!!

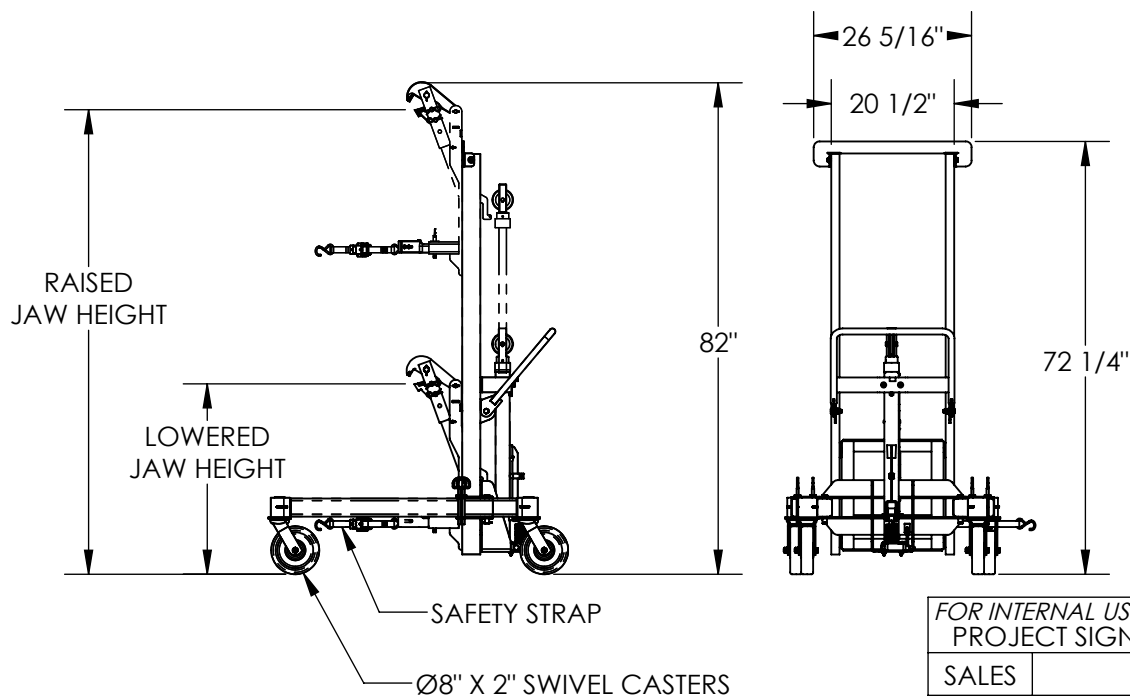
\*\*\* ANY ADDITIONS, DELETIONS, OR OMISSIONS MUST BE CORRECTED ON THIS DRAWING AS THIS DRAWING WILL BE CONSIDERED ALL INCLUSIVE \*\*\*

ALL GRAPHICS PROVIDED ARE FOR REFERENCE ONLY. IF CERTAIN DIMENSIONS ARE CRITICAL PLEASE VERIFY THOSE DIMENSIONS WITH YOUR SALESPERSON



## STANDARD FEATURES

- MODEL NUMBER IS DCR-880-H-HP
- CAPACITY IS 880 LBS.
- MIN. OVERALL HEIGHT IS 72 1/4"
- MAX. OVERALL HEIGHT IS 82"
- MIN. OVERALL LENGTH IS: 43 5/8"
- MAX. OVERALL LENGTH IS 50"
- MIN. OVERALL WIDTH IS 35 7/8"
- MAX OVERALL WIDTH IS 68 7/8"
- MIN. INSIDE WIDTH 28 3/8"
- MAX INSIDE WIDTH IS 61 3/8"
- LOWERED JAW HEIGHT IS 31"
- RAISED JAW HEIGHT IS 77 1/2"
- FOOT PUMP OPERATION
- CASTERS: 8 x 2 SWIVEL
- INCLUDES SAFETY STRAP
- TOUGH BAKED IN POWDER COATED YELLOW FINISH



## SPECIAL FEATURES

NONE

DIMENSION TOLERANCE ± 1/4"

<b>APPROVAL</b>	I, THE UNDERSIGNED, AGREE THAT THE PRODUCT AS REPRESENTED SATISFIES DESIGN AND DIMENSION REQUIREMENTS. I ALSO ACKNOWLEDGE MY DUTY TO CONFIRM PRODUCT AND INSTALLATION COMPLIANCE WITH ALL APPLICABLE FEDERAL, STATE AND LOCAL REGULATIONS AND STANDARDS.	
	<b>ANY MODIFIED UNITS ARE NON-RETURNABLE</b>	
	[ ] As drawn      [ ] As marked	
	Signed: _____	Date: _____
Printed Name: _____		
<b>LEAD TIME WILL START UPON RECEIPT OF SIGNED APPROVAL DRAWING</b>		

FOR INTERNAL USE ONLY PROJECT SIGN OFF	
SALES	
ENG.	
FAB.	
POWER	

DISTRIBUTOR'S NAME:		P.O.#
<b>VESTIL MANUFACTURING</b>		X
		W.O.#
DRAWN BY: WHR REFERENCE: X QUOTED LEAD TIME: X	DATE: 2/22/2012 SCALE: 1:32 QUOTE # X	X X FILE NAME: 40-007-022