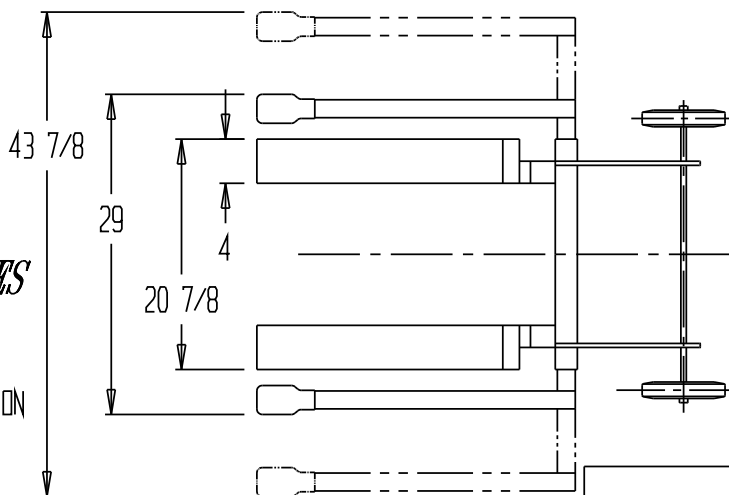
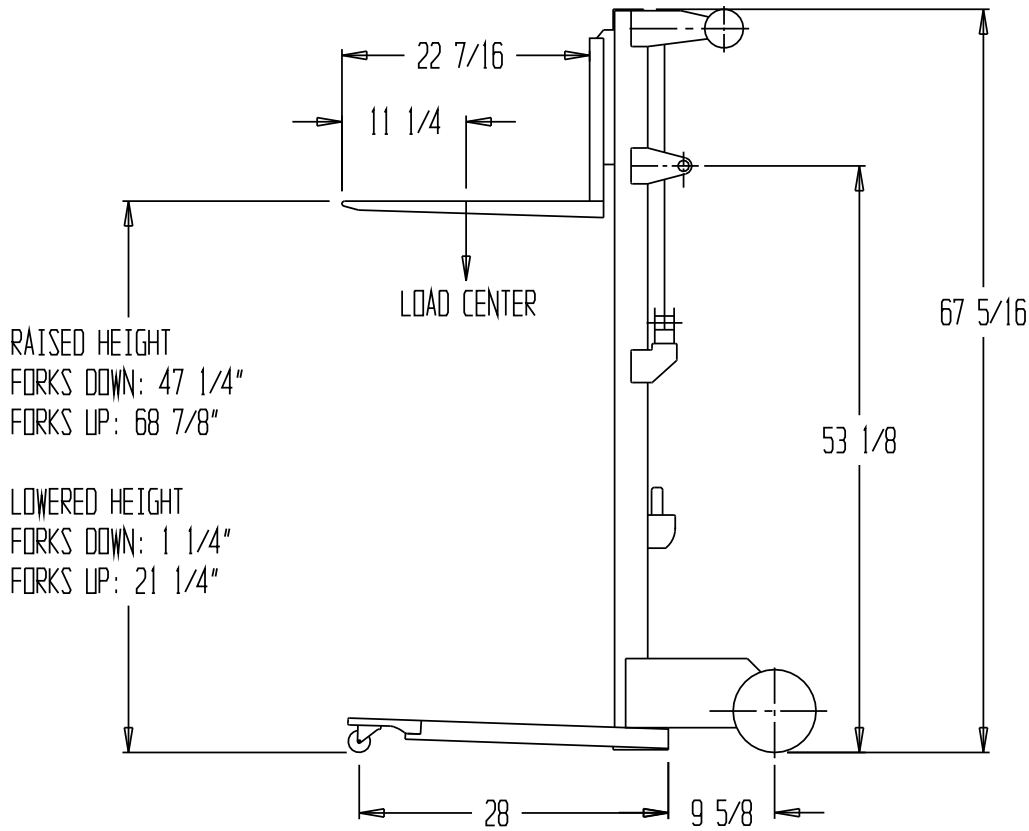


HAND WINCH LIFT TRUCK - A-LIFT-S



STANDARD FEATURES

MODEL NUMBER: A-LIFT-S
 DURABLE STEEL AND ALUMINUM CONSTRUCTION
 CAPACITY: 500 LBS
 LOWERED HEIGHT
 FORKS DOWN: 1 1/4"
 FORKS UP: 21 1/4"
 RAISED HEIGHT
 FORKS DOWN: 47 1/4"
 FORKS UP: 68 7/8"
 TWO Ø 8" NON-MARKING REAR WHEELS
 TWO Ø 2" FRONT SWIVEL CASTERS

PRODUCTION WILL START UPON RECEIPT OF SIGNED APPROVAL DRAWING

APPROVAL

I, the undersigned, hereby approve this print
 As drawn As marked
 This includes my approval of design & dimensions.
 Signed: _____
 Date: _____

SPECIAL FEATURES

NONE

**SPECIAL UNITS ARE NON-RETURNABLE
 *AVAILABLE AT ADDITIONAL COSTS

DISTRIBUTOR'S NAME: VESTIL MANUFACTURING		P.O.#:
DRAWN BY: <input checked="" type="checkbox"/> WESTFALL		W.O.#:
DATE: 3/21/07	SALES:	
REFERENCE:	DRWG./FILE NAME:	
SCALE 1:18		