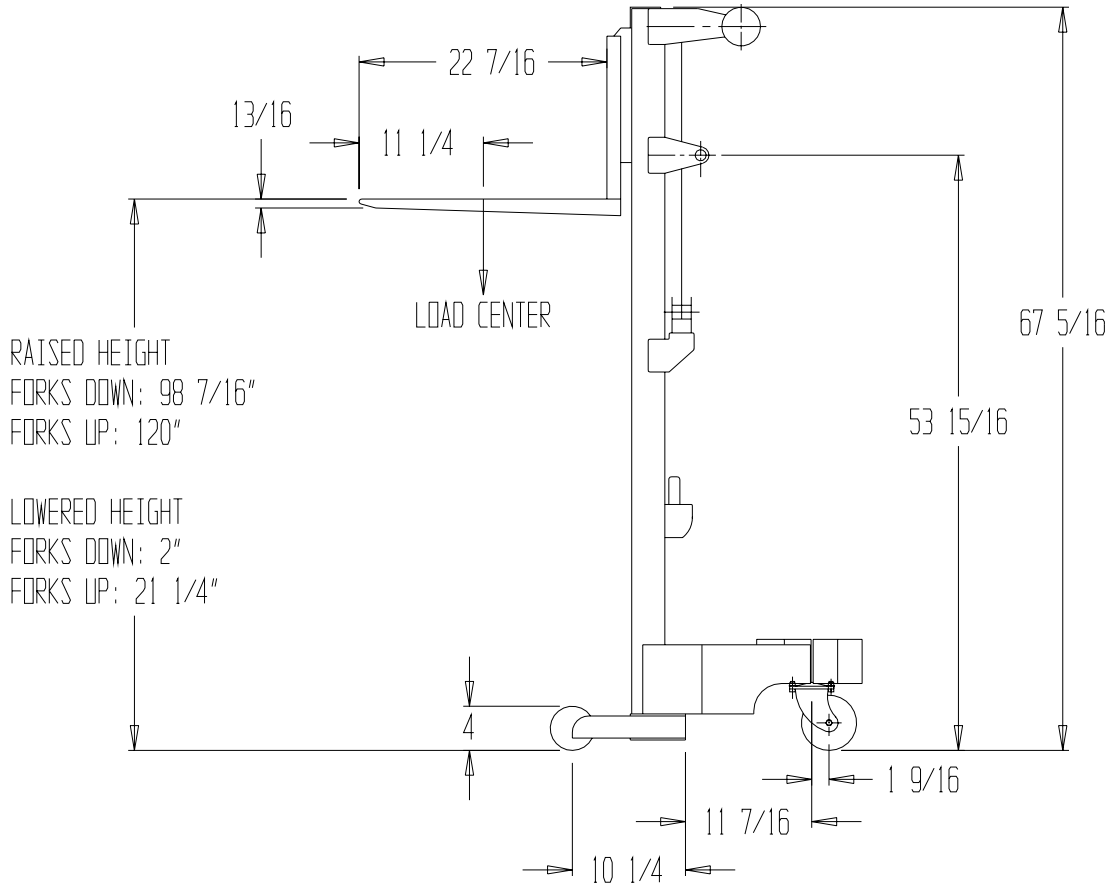


# HAND WINCH LIFT TRUCK - A-LIFT-CB-HP



## STANDARD FEATURES

MODEL NUMBER: A-LIFT-CB-HP  
DURABLE STEEL AND ALUMINUM CONSTRUCTION

CAPACITY: 400 LBS

LOWERED HEIGHT

FORKS DOWN: 2"

FORKS UP: 21 1/4"

RAISED HEIGHT

FORKS DOWN: 98 7/16"

FORKS UP: 120"

TWO Ø 5" REAR SWIVEL CASTERS

TWO Ø 4" FRONT WHEELS

RAISED HT = 97 COMPLETE REVOLUTION ON CRANK HANDLE

BASE OD: 43 1/4" - 28 1/4"

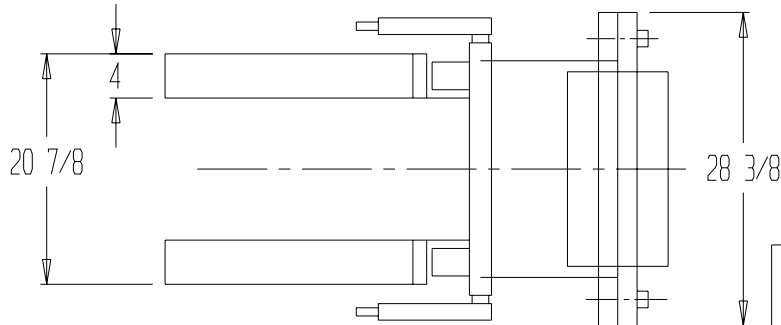
BASE ID: 36 1/2" - 21 1/2"

## SPECIAL FEATURES

NONE

\*\*SPECIAL UNITS ARE NON-RETURNABLE

\*AVAILABLE AT ADDITIONAL COSTS



PRODUCTION WILL START UPON RECEIPT OF SIGNED APPROVAL DRAWING

## APPROVAL

I, the undersigned, hereby approve this print

[ ] As drawn [ ] As marked

This includes my approval of design & dimensions.

Signed: \_\_\_\_\_

Date: \_\_\_\_\_

DISTRIBUTOR'S NAME:		P.O.#:
<b>VESTIL MANUFACTURING</b>		W.O.#:
DRAWN BY: Q. WESTFALL	DATE: 3/21/07	SALES:
REFERENCE:	SCALE 1:18	DRWG./FILE NAME: 21-007-070