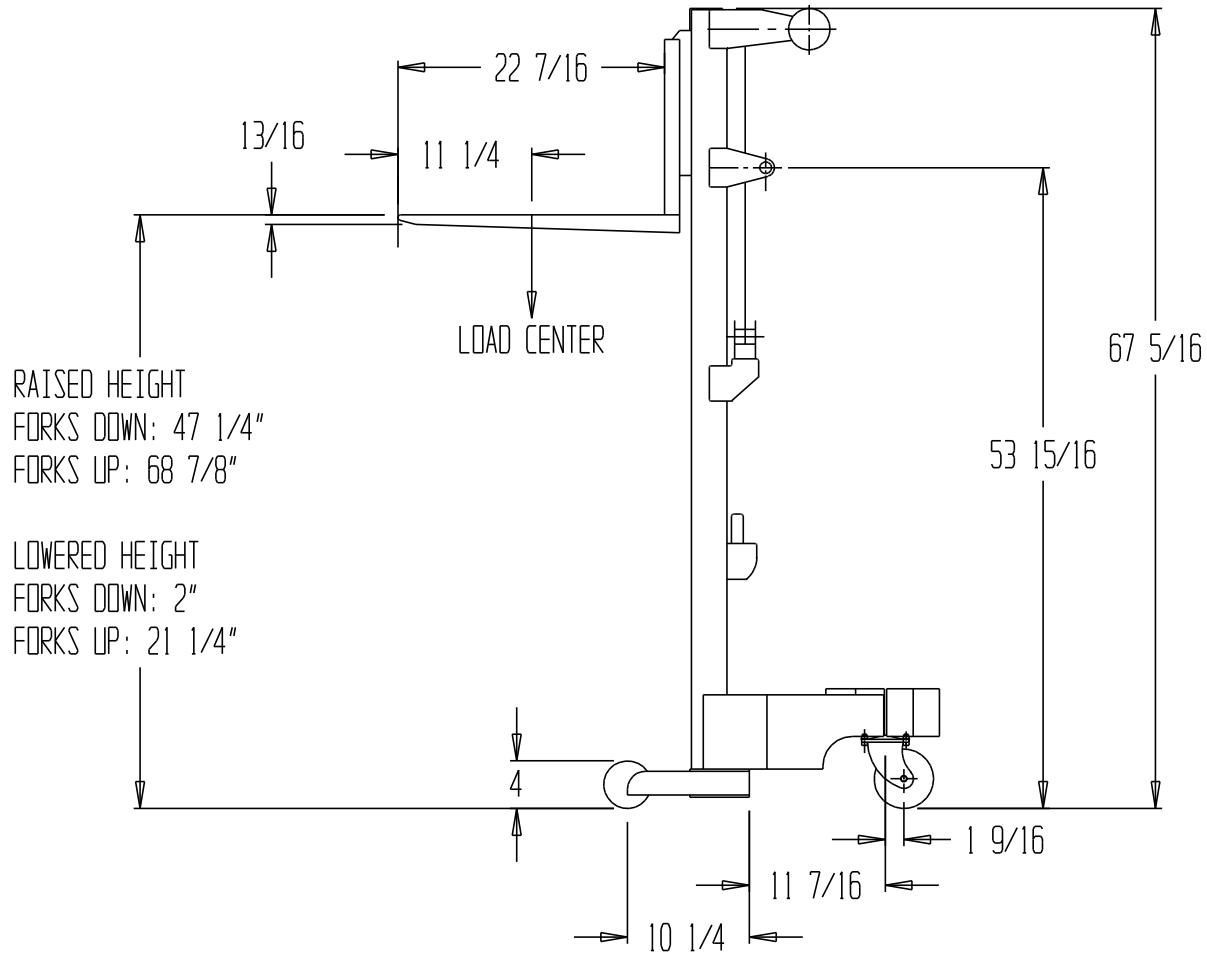
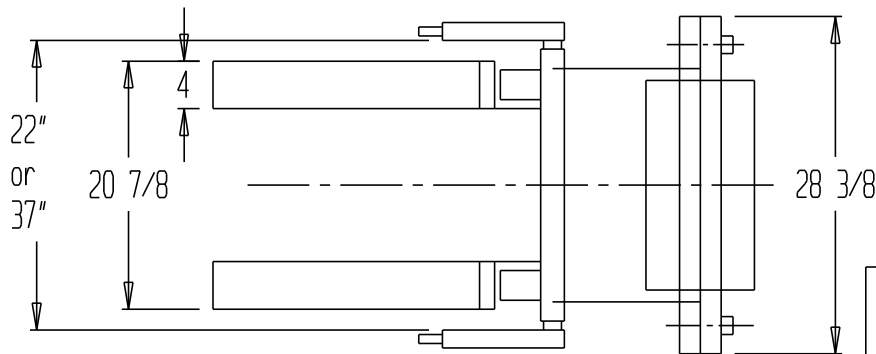


HAND WINCH LIFT TRUCK - A-LIFT-CB



RAISED HEIGHT
 FORKS DOWN: 47 1/4"
 FORKS UP: 68 7/8"

LOWERED HEIGHT
 FORKS DOWN: 2"
 FORKS UP: 21 1/4"



STANDARD FEATURES

MODEL NUMBER: A-LIFT-CB
 DURABLE STEEL AND
 ALUMINUM CONSTRUCTION

CAPACITY: 500 LBS

LOWERED HEIGHT

FORKS DOWN: 2"

FORKS UP: 21 1/4"

RAISED HEIGHT

FORKS DOWN: 47 1/4"

FORKS UP: 68 7/8"

TWO Ø 5" REAR SWIVEL CASTERS

TWO Ø 4" FRONT WHEELS

RAISED HT = 47 COMPLETE REVOLUTION ON CRANK

BASE OD: 43 1/4" - 28 1/4"

BASE ID: 36 1/2" - 21 1/2"

HANDLE USABLE WIDTH = 18 5/8"

HANDLE IS STEEL W/ FOAM GRIP

PRODUCTION WILL START UPON
 RECEIPT OF SIGNED APPROVAL
 DRAWING

**A
P
P
R
O
V
A
L**

I, THE UNDERSIGNED, AGREE THAT THE PRODUCT AS REPRESENTED SATISFIES DESIGN & DIMENSION REQUIREMENTS. I ALSO ACKNOWLEDGE MY DUTY TO CONFIRM PRODUCT & INSTALLATION COMPLIANCE WITH ALL APPLICABLE FEDERAL, STATE AND LOCAL REGULATIONS & STANDARDS.

UNITS REQUIRING APPROVAL DRAWINGS OR MODIFIED ARE NON-RETURNABLE
 () As drawn () As marked

Signed: _____ Date: _____
 Printed Name _____

LEAD TIME WILL START UPON RECEIPT OF SIGNED APPROVAL DRAWING

SPECIAL FEATURES

NONE

**SPECIAL UNITS ARE NON-RETURNABLE

*AVAILABLE AT ADDITIONAL COSTS

| | | |
|--|------------|---------------------------------------|
| DISTRIBUTOR'S NAME: VESTIL MFG | | P.O.#: _ |
| DRAWN BY: Q. WESTFALL | | W.O.#: _ |
| DATE: 3/21/2007 | SALES: _ | |
| REFERENCE: _ | SCALE: _ | DRWG./FILE NAME: 21-007-069 |
| QUOTED LEADTIME: _ | QUOTE #: _ | |