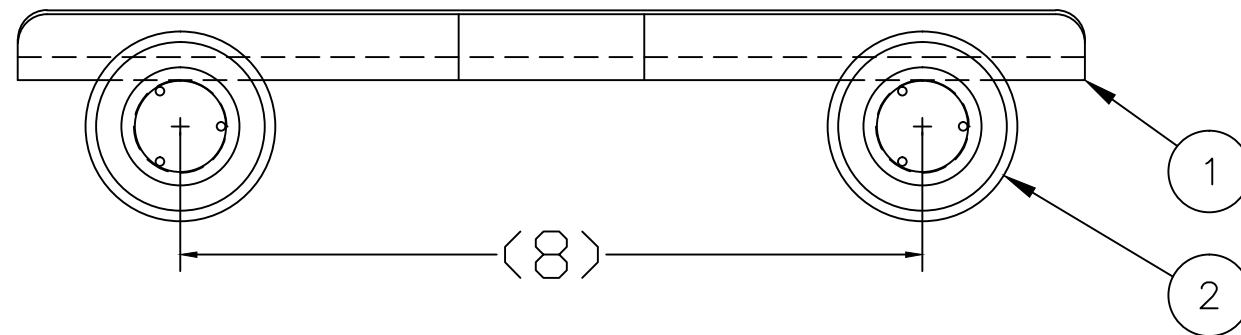
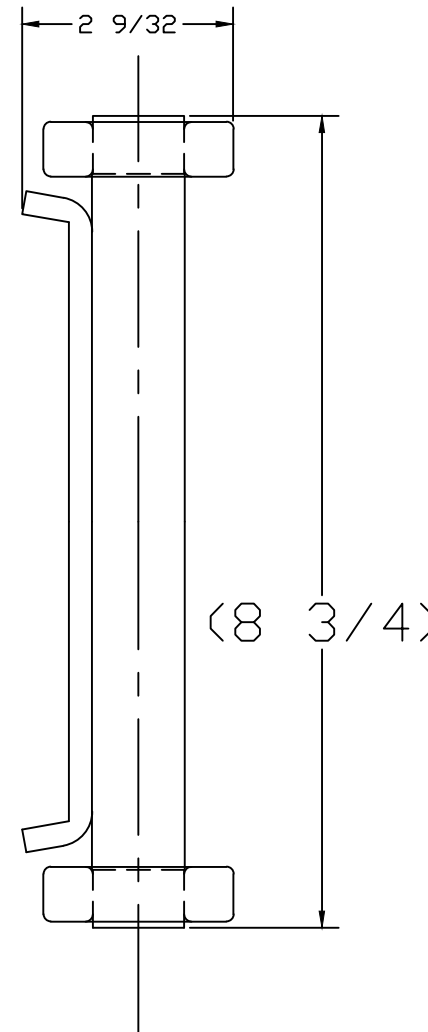
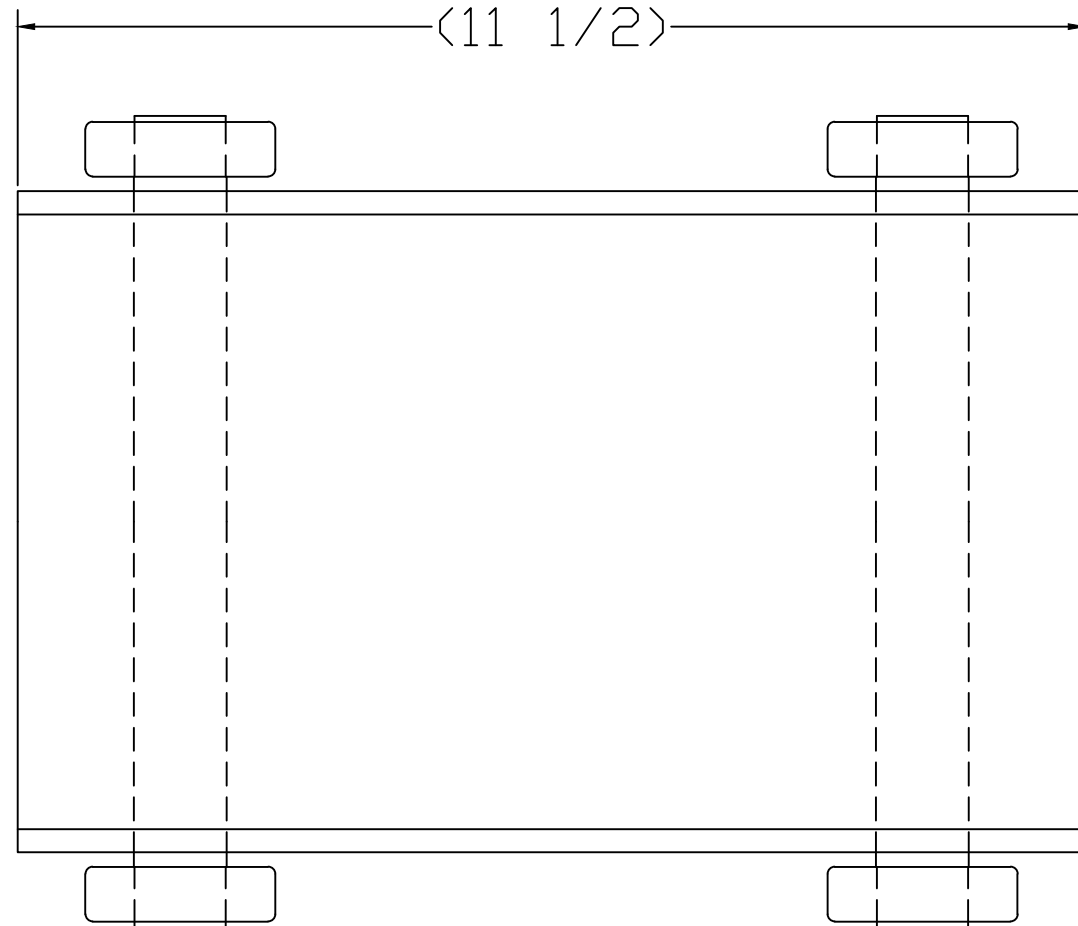


480020

BILL OF MATERIAL

ITEM	PART NO.	DESCRIPTION	QTY.
1	051580	WELDMENT: DOLLY BASE	1
2	108491	WHEEL, 25mm ID BALL BEAR.	4
*	108993	BOX: CORRUGATED: #29H4	1



- Capacity: 10,000lbs
- Weight: 10 lbs
- 0.25" thick steel plate
- 2" x 0.5" aircraft quality, heat treated steel wheels

THIS DRAWING IN ALL PARTICULARS IS WESCO INDUSTRIAL PRODUCTS INC. PROPERTY. ALL RIGHTS OF DESIGN, INVENTION OR USE OF ARE RESERVED.

PRINT ISSUED

JAN. 09, 2003

WESCO MANUFACTURING
ENGINEERING DEPARTMENT

REV.	ECN & DATE	APP
C	5000 01-09-03 PAINT #109821 KL WAS 109796	PS
B	4392 11-6-00 ADDED BOX:108993 & LABEL 150357	PS
A	4337 9-15-00 RELEASED FOR PRODUCTION	PS

WESCO INDUSTRIAL PRODUCTS INC.
LANSDALE PENNA. 19446

PART NAME DOLLY, STEEL 10,000 LBS. CAPACITY		DRAWN: PS 9-12-00
TOLERANCE UNLESS OTHERWISE SPECIFIED		CHECKED:
FRACTION 3 PLACE DECIMAL 2 PLACE DECIMAL		APP. ENGR.
± 1/64 ± .005 ± .01		SCALE: 1" = 2"
ANGULAR ± 1-1/2'	SHEET 1 OF 1	B- 480020 REV C
BREAK ALL SHARP EDGES AND REMOVE ALL BURRS		