

NON KIT ITEMS				
ITEM	PART NO.	ITEM	DESCRIPTION	QTY
	172447		COMPLETE REPLACEMENT PUMP	1
	172159		U-BOLT FOR WELDED ON JACK	1
	272942		OPTIONAL PLATFORM	1
	172147	23	ELASTIC CYLINDRICAL PIN ϕ 3X18	1
	172148	24	RELEASE VALVE BAR	1

KIT ASSEMBLIES				
KIT	PART NO.	KIT COMPONENTS		
		ITEM	DESCRIPTION	QTY.
G	172338		CHAIN COVER ASSEMBLY	
		47	DUSTPROOF COVER	2
H	172353		CHAIN KIT	
		40	SPLIT COTTER ϕ 3	1
		41	LOAD CHAIN CONNECTING BOLT	2
		42	LOAD CHAIN LINK	2
		43	LOAD CHAIN 10A	1
J	172416		JACK RELEASE KIT	
		9	NUT M10	1
		26	TORSIONAL SPRING	1
		27	SOCKET HEAD CAP SCREW M6X16	4
		28	NUT M6	4
		29	FIXED TUBE	1
		30	PRESSURE RELEASE LEVER	1
		31	KNOB M10	1
K	172417		FOOT PEDAL PUMP KIT	
		58	FOOT PEDAL BASE SHAFT	1
		58A	PUMP RING	1
		59	FOOT PEDAL ROLLER SHAFT	1
		60	ROLLER	1

KIT ASSEMBLIES				
KIT	PART NO.	KIT COMPONENTS		
		ITEM	DESCRIPTION	QTY.
A	172445		SEAL KIT	
		22	O-RING 7.5X1.8	2
		34	O-RING 31.5X3.55	1
		35	UNS SHAPE SEAL 25X33X6	2
		36	CYLINDER TOP COVER	1
		37	DUSTPROOF RING 25X33X4.5/6	1
		56	DUSTPROOF RING 18X26X4.5/6	1
		57	UNS SHAPE SEAL 18X26X6	1
B	172424		HANDLE KIT	
		1	HANDRAIL FRAME UNIT	1
		2	NUT M8	2
		3	SPRING WASHER ϕ 8	2
		4	PLAIN WASHER ϕ 8	2
		5	CYLINDER HOOP	1
		6	HEX BOLT M10X30	4
		7	PLAIN WASHER ϕ 10	4
		8	SPRING WASHER ϕ 10	4
		9	NUT M10	8
C	172415		CASTER KIT	
		10	HEX CAP NUT M20	2
		11	SPRING WASHER ϕ 20	2
		12	REAR SWIVEL CASTER (5"-M20)	2
D	172168		WHEEL KIT	
		14	CIRCLIP FOR SHAFT ϕ 12	8
		15	FRONT AXLE	2
		16	FRONT WHEEL SLEEVE	4
		17	FRONT WHEEL	2
E	172356		FOOT PEDAL KIT	
		61	FOOT PEDAL BAR	1
		62	PEDAL CUSHION COVER	1
F	172358		CHAIN WHEEL KIT	
		49	COPPER BUSH ϕ 15X1	2
		51	SUPPORT SHAFT	1

*NOTE: KIT G CHAIN COVER ASSEMBLY CONSISTS OF THE PLASTIC COVER. THIS ASSEMBLY CAN BE USED TO REPLACE THE CURRENT PLASTIC COVER OR THE IRON COVER.

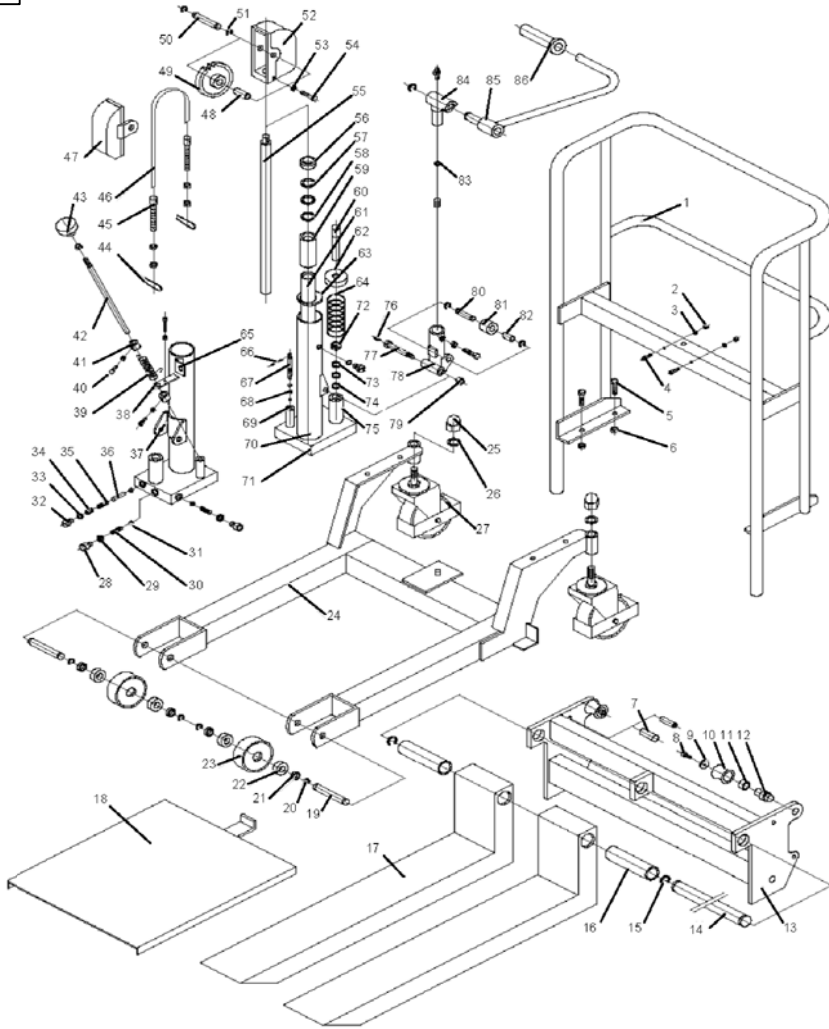
THIS DRAWING IN ALL PARTICULARS IS WESCO INDUSTRIAL PRODUCTS, LLC PROPERTY. ALL RIGHTS OF DESIGN, INVENTION OR USE OF ARE RESERVED.

PRINT ISSUED

JAN 14, 2018

WESCO MANUFACTURING
ENGINEERING DEPARTMENT

APP REV. EON & DATE REVISIONS	WESCO INDUSTRIAL PRODUCTS, LLC		NORTH WALES PENNA. 19454	
	PART NAME		DRAWN:	
	STACKER: FORK TYPE VALUE LIFT VL59 (MODEL MANUFACTURED AFTER 6/2013)		CHECKED:	
	TOLERANCE UNLESS OTHERWISE SPECIFIED		APP. ENGR.	
FRACTION		3 PLACE DECIMAL	2 PLACE DECIMAL	SCALE:
$\pm 1/64$		$\pm .005$	$\pm .01$	
ANGULAR $\pm 1-1/2'$		SHEET	1 OF 2	D - 272941
BREAK ALL SHARP EDGES AND REMOVE ALL BURRS				REV



NON KIT ITEMS			
ITEM	PART NO.	DESCRIPTION	QTY
	172165	JACK	1
	172159	U-BOLT FOR WELDED ON JACK	1
	272942	OPTIONAL PLATFORM	1
49	172358	CHAIN WHEEL	1
66	172480	COPPER BUSH #18x1	1
67	172481	CIRCLIP FOR SHAFT #10	1
68	172482	COPPER BUSH #10x1.5	1

KIT ASSEMBLIES			
KIT	PART NO.	DESCRIPTION	QTY.
H	172353	CHAIN KIT	
	44	SPLIT PIN	2
	45	CHAIN BOLT	2
	46	ROLLER CHAIN	1
J	172416	JACK RELEASE KIT	
	39	TORSION SPRING	1
	40	POSITIONING BOLT	1
	41	POSITIONING RING	1
	42	SINGLE DIRECTION VALVE POLE	1
	43	HANDLE	1
K	172417	FOOT PEDAL PUMP KIT	
	76	OIL CUP	2
	77	PUMP AXLE	1
	78	PUMP BASE	1
	79	NUT	1
	80	PUMP RING AXLE	1
	81	PUMP RING	1
	82	OIL FREE BEARING	1
	83	STEEL BALL	1
	84	AXLE SLEEVE	1
L	172418	CARRIAGE KIT	
	7	SHIELD PIN	4
	8	HEX BOLT	4
	9	WASHER	4
	10	ROLLING WHEEL	4
	11	OIL FREE BEARING	4
	12	ROLLING WHEEL AXLE	4
	13	FIXED RACK	1
	14	LONG AXLE	1
	15	SPLIT RING	2
	16	SLEEVE	2
	172418	INNER VALVE ASSEMBLY (FOR UNITS MANUFACTURED AFTER 2010)	
	66	CYLINDER PIN	1
	67	VALVE CORE	1
	68	O-RING	2

KIT ASSEMBLIES				
KIT	PART NO.	ITEM	DESCRIPTION	QTY.
A	172355		SEAL KIT	
	56		DUST PROOF RING	1
	57		O-RING	2
	58		NYLON RING	1
	72		DUST PROOF RING	1
	73		O-RING	1
	74		NYLON RING	1
B	172424		HANDLE KIT	
	1		SLIDEWAY HANDRAIL	1
	2		NUT	2
	3		WASHER	2
	4		INTERNAL HEX BOLT	2
	5		HEX BOLT	4
	6		NUT	4
C	172170		CASTER KIT	
	25		NUT	1
	26		INTERNAL TEETHED LOCK WASHER	1
	27		BACK WHEEL	1
D	172168		WHEEL KIT	
	19		FRONT WHEEL AXLE	1
	20		SPLIT RING	2
	21		WASHER	2
	22		BEARING	2
	23		FRONT WHEEL	1
E	172356		FOOT PEDAL KIT	
	85		FOOT STEP LEVER	1
	86		RUBBER GLOVE	1
F	172358		CHAIN WHEEL KIT	
	48		OIL FREE BEARING	1
	49		CHAIN & WHEEL	1
	50		CHAIN WHEEL AXLE	1
	51		SPLIT RING	1
*G	172338		CHAIN COVER ASSEMBLY	
	47		CHAIN COVER (PLASTIC)	1
	52		CHAIN COVER (PLASTIC)	1

*NOTE: KIT G CHAIN COVER ASSEMBLY CONSISTS OF THE PLASTIC COVER. THIS ASSEMBLY CAN BE USED TO REPLACE THE CURRENT PLASTIC COVER OR THE IRON COVER.

THIS DRAWING IN ALL PARTICULARS IS WESCO INDUSTRIAL PRODUCTS INC. PROPERTY. ALL RIGHTS OF DESIGN, INVENTION OR USE OF ARE RESERVED.

PRINT ISSUED

JAN 14, 2018

WESCO MANUFACTURING
ENGINEERING DEPARTMENT

WESCO INDUSTRIAL PRODUCTS INC.
NORTH WALES PENNA. 19454

PART NAME: STACKER: FORK TYPE
VALUE LIFT VL59
(MODEL MANUFACTURED BEFORE 6/2013)

TOLERANCE UNLESS OTHERWISE SPECIFIED

FRACTION	3 PLACE DECIMAL	2 PLACE DECIMAL
± 1/64	± .005	± .01
ANGULAR ± 1-1/2"	SHEET 2 OF 2	

BREAK ALL SHARP EDGES AND REMOVE ALL BURRS

SCALE: D-272941