

REPLACEMENT PARTS LIST			
ITEM	PART NO.	DESCRIPTION	QTY.
01	272753	FRONT WHEEL (FOR MODELS BEFORE 12/2009 & MODELS AFTER 2014)	2
	273728	FRONT WHEEL (FOR MODELS FROM BETWEEN 2010 AND 2014)	2
02	272638	BALL BEARING (FOR MODELS BEFORE 12/2009 & MODELS AFTER 2014)	8
	272489	BALL BEARING (FOR MODELS FROM BETWEEN 2010 AND 2014)	8
03		WASHER	6
04		SNAP RING	16
05		PIN	2
06		LEG	2
07		SCREW	2
08		WASHER	2
09		WASHER	2
10		BALL BEARING	4
11		LEG	1
12		CENTRIFUGAL AXLE	2
13		BUSH	2
14		WASHER	4
15		BUSH	2
16		NUT	2
17	272639	STEERING WHEEL (FOR MODELS BEFORE 12/2009 & MODELS AFTER 2014)	2
	272488	STEERING WHEEL (FOR MODELS FROM BETWEEN 2010 AND 2014)	2
18		WHEEL YOKE	1
19		SCREW	2
20		NUT	2
21		SCREW	3
22		SPACER	1
23		BUSH	1
24		PIN	2
25		BUSH	2
26		HOLD YOKE	1

REPLACEMENT PARTS LIST			
ITEM	PART NO.	DESCRIPTION	QTY.
27		BALL BEARING	1
28		SPACER	1
29		NUT	2
30		PIN	2
31		SNAP RING	2
32		PIN	2
33		SCREW	2
34		BUSH	2
35		HANDLE TUBE	1
36		NUT	1
37		EYE BOLT	1
38		CHAIN	1
39		CHAIN CONNECTOR	3
40		RELEASE ROD	1
41		SCREW	6
42		COVER	1
43		PIN	6
44		PIN	1
45		BALL	1
46		SPRING	1
47		RELEASE LEVER	1
48	272466	HANDLE (FOR MODELS BEFORE 12/2009 & MODELS AFTER 2014)	1
	272480	HANDLE (FOR MODELS FROM BETWEEN 2010 AND 2014)	1
49		RETAINING RING	1
50		WASHER	1
51		BALL BEARING	1
52		SNAP RING	1
53		SPACER	1
54		SPACER	1
55		FORK	1
56		HOOKED PLATE	1
57		SPACER	2
58		SPACER	2
59		PIN	2
60		SCREW	2
61		NUT	2
62		HANDLE TUBE	1

Manual High Lift

- 1 Year pump warranty
- Non-telescoping model
- 180 degree steering arc
- Loop handles with inside hand control
- Closed pallets must be place on top of forks.
- 6.5" wide forks
- 6" moldon polyurethane steering wheels
- 3" moldon polyurethane load wheels.

Specs

- Capacity: 2,200 lbs
- Fork length: 44.5"
- Fork separation: 27"
- Overall length: 56"
- Lowered/Raised: 3.6"/31.5"
- Handle Height: 48.5"
- Weight: 300 lbs

THIS DRAWING IN ALL PARTICULARS IS WESCO INDUSTRIAL PRODUCTS INC. PROPERTY. ALL RIGHTS OF DESIGN, INVENTION OR USE OF ARE RESERVED.

REV.	EON & DATE	APP	WESCO INDUSTRIAL PRODUCTS INC.	
			NORTH WALES PENNA. 19454	
			PART NAME Manual High Lift – NTSHL27	
			DRAWN:	
			CHECKED:	
			APP. ENGR.	
			SCALE:	
			B- 272463	
			REV	

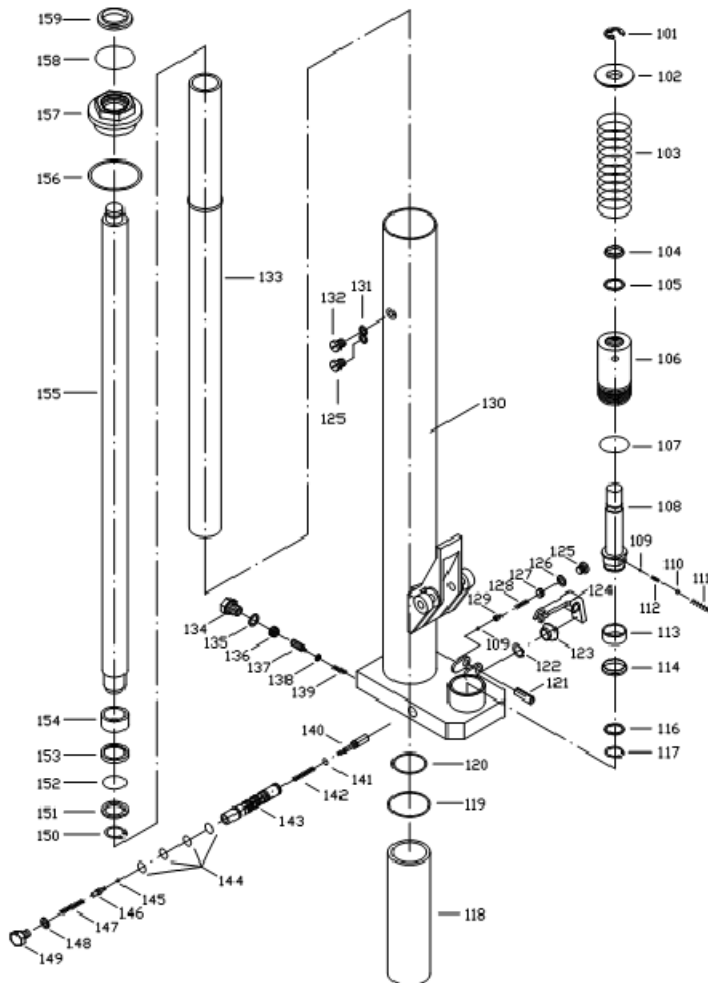
TOLERANCE UNLESS OTHERWISE SPECIFIED

FRACTION 3 PLACE DECIMAL 2 PLACE DECIMAL

± 1/64 ± .005 ± .01

ANGULAR ± 1-1/2' SHEET 1 OF 2

BREAK ALL SHARP EDGES AND REMOVE ALL BURRS



REPLACEMENT PARTS LIST

ITEM	PART NO.	DESCRIPTION	QTY.
101		RETAINING RING	2
102		SPRING SEAT	8
103		SPRING	6
104		WIPER	16
105		Y-RING	2
106		PUMP	2
107		O-RING	2
108		PLUNGER	2
109		BALL	2
110		BALL	4
111		SPRING	1
112		SPRING	2
113		BRONZE BUSH	2
114		RETAINING O-RING	4
116		WASHER	2
117		SNAP RING	2
118		CYLINDER BUSH	2
119		O-RING	1
120		O-RING	2
121		PIN	2
122		SNAP IRNG	3
123		RUBBER SLEEVE	1
124		PENDULUM ARM	1
125		SCREW	2
126		O-RING	2
127		SCREW	1
128		SPRING	1
129		BALL SEAT	1
130		PUMP HOUSING	2

REPLACEMENT PARTS LIST

ITEM	PART NO.	DESCRIPTION	QTY.
131		O-RING	2
132		SCREW	2
133		CYLINDER	2
134		SCREW	1
135		SEAL RING	1
136		SCREW	1
137		SCREW	1
138		PLATE	3
139		SPRING	1
140		RELEASE INDICATOR	6
141		O-RING	1
142		SPRING	6
143		VALVE INSERT	1
144		O-RING	1
145		BALL	1
146		RELEASE VALVE	1
147		SPRING	1
148		SEAL RING	1
149		SCREW	1
150		SNAP RING	1
151		WASHER	1
152		O-RING	1
153		RETAINING O-RING	1
154		PISTON	1
155		PISTON ROD	1
156		SEAL RING	1
157		CYLINDER NUT	1
158		O-RING	1
159		J-WIPER	2

COMPLETE REPLACEMENT PUMPS LIST

ITEM	PART NO.	DESCRIPTION	QTY.
	272465	COMPLETE REPLACEMENT PUMP (FOR MODELS BEFORE 12/2009)	1
	272477	COMPLETE REPLACEMENT PUMP (FOR MODELS FROM BETWEEN 2010 AND 2014)	1
	272637	COMPLETE REPLACEMENT PUMP (FOR MODELS AFTER 2014)	1

THIS DRAWING IN ALL PARTICULARS IS WESCO INDUSTRIAL PRODUCTS INC. PROPERTY. ALL RIGHTS OF DESIGN, INVENTION OR USE OF ARE RESERVED.

WESCO INDUSTRIAL PRODUCTS INC.
NORTH WALES PENNA. 19454

PART NAME
Manual High Lift - NTSHL27

DRAWN:
CHECKED:
APP. ENGR.

TOLERANCE UNLESS OTHERWISE SPECIFIED

FRACTION	3 PLACE DECIMAL	2 PLACE DECIMAL
± 1/64	± .005	± .01

ANGULAR ± 1-1/2'	SHEET 2 OF 2
------------------	--------------

BREAK ALL SHARP EDGES AND REMOVE ALL BURRS

SCALE:

B- 272463 REV