

REPLACEMENT PARTS LIST			
ITEM	PART NO.	DESCRIPTION	QTY.
01	272753	FRONT WHEEL (FOR MODELS BEFORE 12/2009 & MODELS AFTER 2014)	2
	273728	FRONT WHEEL (FOR MODELS FROM BETWEEN 2010 AND 2014)	2
02	272638	BALL BEARING (FOR MODELS BEFORE 12/2009 & MODELS AFTER 2014)	8
	272489	BALL BEARING (FOR MODELS FROM BETWEEN 2010 AND 2014)	8
03		WASHER	6
04		SNAP RING	16
05		PIN	2
06		LEG	2
07		SCREW	2
08		WASHER	2
09		WASHER	2
10		BALL BEARING	4
11		LEG	1
12		CENTRIFUGAL AXLE	2
13		BUSH	2
14		WASHER	4
15		BUSH	2
16		NUT	2
17	272639	STEERING WHEEL (FOR MODELS BEFORE 12/2009 & MODELS AFTER 2014)	2
	272488	STEERING WHEEL (FOR MODELS FROM BETWEEN 2010 AND 2014)	2
18		WHEEL YOKE	1
19		SCREW	2
20		NUT	2
21		SCREW	3
22		SPACER	1
23		BUSH	1
24		PIN	2
25		BUSH	2
26		HOLD YOKE	1

REPLACEMENT PARTS LIST			
ITEM	PART NO.	DESCRIPTION	QTY.
27		BALL BEARING	1
28		SPACER	1
29		NUT	2
30		PIN	2
31		SNAP RING	2
32		PIN	2
33		SCREW	2
34		BUSH	2
35		HANDLE TUBE	1
36		NUT	1
37		EYE BOLT	1
38		CHAIN	1
39		CHAIN CONNECTOR	3
40		RELEASE ROD	1
41		SCREW	6
42		COVER	1
43		PIN	6
44		PIN	1
45		BALL	1
46		SPRING	1
47		RELEASE LEVER	1
48	272466	HANDLE (FOR MODELS BEFORE 12/2009 & MODELS AFTER 2014)	1
	272480	HANDLE (FOR MODELS FROM BETWEEN 2010 AND 2014)	1
49		RETAINING RING	1
50		WASHER	1
51		BALL BEARING	1
52		SNAP RING	1
53		SPACER	1
54		SPACER	1
55		FORK	1
56		HOOKED PLATE	1
57		SPACER	2
58		SPACER	2
59		PIN	2
60		SCREW	2
61		NUT	2
62		HANDLE TUBE	1

Manual High Lift

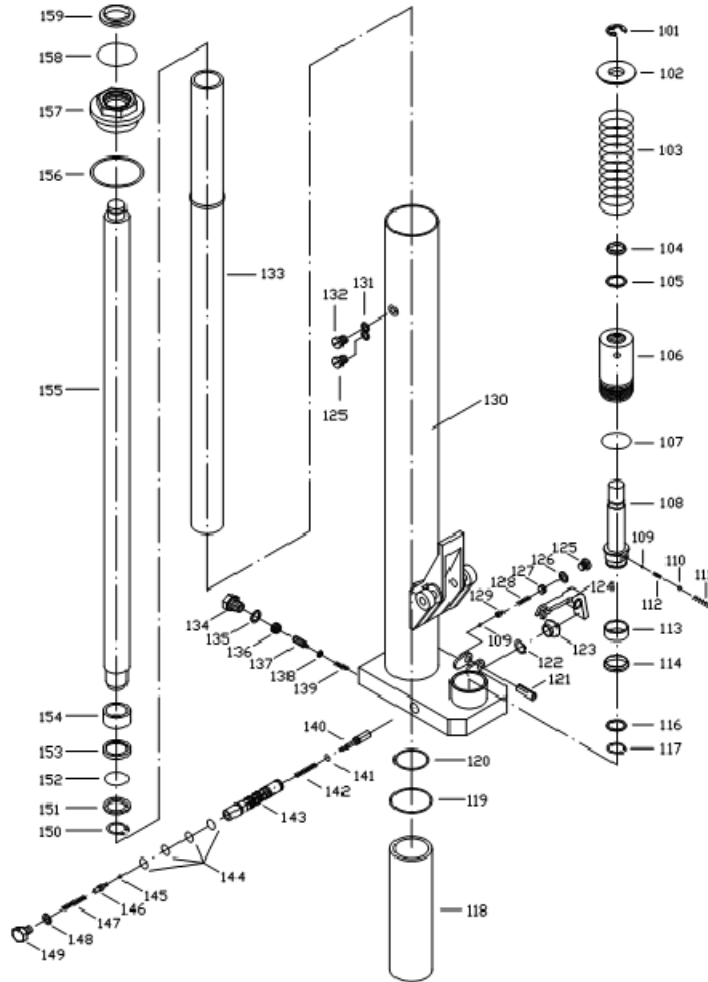
- 1 Year pump warranty
- Non-telescoping model
- 180 degree steering arc
- Loop handles with inside hand control
- Closed pallets must be place on top of forks.
- 6.5" wide forks
- 6" moldon polyurethane steering wheels
- 3" moldon polyurethane load wheels.

Specs

- Capacity: 2,200 lbs
- Fork length: 44.5"
- Fork seperation: 21"
- Overall length: 56"
- Lowered/Raised: 3.6"/31.5"
- Handle Height: 48.5"
- Weight: 275 lbs

THIS DRAWING IN ALL PARTICULARS IS WESCO INDUSTRIAL PRODUCTS INC. PROPERTY. ALL RIGHTS OF DESIGN, INVENTION OR USE OF ARE RESERVED.

REV. EN & DATE	APP	<b>WESCO INDUSTRIAL PRODUCTS INC.</b> NORTH WALES PENNA. 19454	
	REVISIONS	PART NAME	DRAWN:
		Manual High Lift - NTSHL20	CHECKED:
		TOLERANCE UNLESS OTHERWISE SPECIFIED	APP. ENGR.
		FRACTION 3 PLACE DECIMAL 2 PLACE DECIMAL	SCALE:
		± 1/64 ± .005 ± .01	
		ANGULAR ± 1-1/2'	SHEET 1 OF 2
		BREAK ALL SHARP EDGES AND REMOVE ALL BURRS	
		<b>B- 272462</b>	REV



REPLACEMENT PARTS LIST			
ITEM	PART NO.	DESCRIPTION	QTY.
101		RETAINING RING	2
102		SPRING SEAT	8
103		SPRING	6
104		WIPER	16
105		Y-RING	2
106		PUMP	2
107		O-RING	2
108		PLUNGER	2
109		BALL	2
110		BALL	4
111		SPRING	1
112		SPRING	2
113		BRONZE BUSH	2
114		RETAINING O-RING	4
116		WASHER	2
117		SNAP RING	2
118		CYLINDER BUSH	2
119		O-RING	1
120		O-RING	2
121		PIN	2
122		SNAP IRNG	3
123		RUBBER SLEEVE	1
124		PENDULUM ARM	1
125		SCREW	2
126		O-RING	2
127		SCREW	1
128		SPRING	1
129		BALL SEAT	1
130		PUMP HOUSING	2

REPLACEMENT PARTS LIST			
ITEM	PART NO.	DESCRIPTION	QTY.
131		O-RING	2
132		SCREW	2
133		CYLINDER	2
134		SCREW	1
135		SEAL RING	1
136		SCREW	1
137		SCREW	1
138		PLATE	3
139		SPRING	1
140		RELEASE INDICATOR	6
141		O-RING	1
142		SPRING	6
143		VALVE INSERT	1
144		O-RING	1
145		BALL	1
146		RELEASE VALVE	1
147		SPRING	1
148		SEAL RING	1
149		SCREW	1
150		SNAP RING	1
151		WASHER	1
152		O-RING	1
153		RETAINING O-RING	1
154		PISTON	1
155		PISTON ROD	1
156		SEAL RING	1
157		CYLINDER NUT	1
158		O-RING	1
159		J-WIPER	2

COMPLETE REPLACEMENT PUMPS LIST

ITEM	PART NO.	DESCRIPTION	QTY.
	272465	COMPLETE REPLACEMENT PUMP (FOR MODELS BEFORE 12/2009)	1
	272477	COMPLETE REPLACEMENT PUMP (FOR MODELS FROM BETWEEN 2010 AND 2014)	1
	272637	COMPLETE REPLACEMENT PUMP (FOR MODELS AFTER 2014)	1

THIS DRAWING IN ALL PARTICULARS IS WESCO INDUSTRIAL PRODUCTS INC. PROPERTY. ALL RIGHTS OF DESIGN, INVENTION OR USE OF ARE RESERVED.

REV.	EN & DATE	REVISIONS	<b>WESCO INDUSTRIAL PRODUCTS INC.</b>	
			NORTH WALES PENNA. 19454	
			PART NAME Manual High Lift - NTSHL20	
			DRAWN:	
			CHECKED:	
			APP. ENGR.	
			SCALE:	
			B- 272462	
			REV	

TOLERANCE UNLESS OTHERWISE SPECIFIED  
 FRACTION 3 PLACE DECIMAL 2 PLACE DECIMAL  
 ± 1/64 ± .005 ± .01  
 ANGULAR ± 1-1/2' SHEET 2 OF 2  
 BREAK ALL SHARP EDGES AND REMOVE ALL BURRS